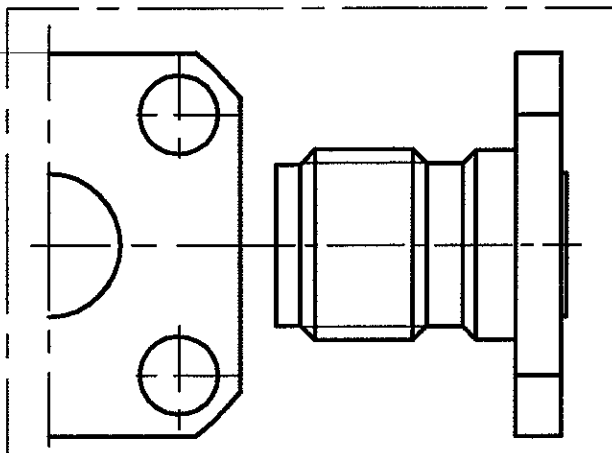
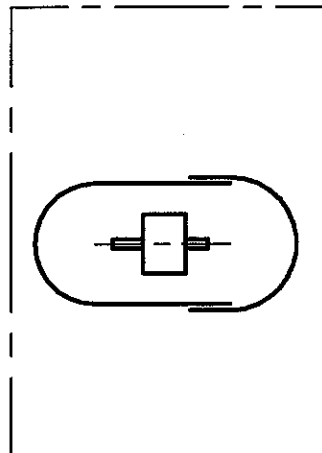


KIT FLANGE RECEPTACLE SMA 2.9
+ GLASS BEAD

CONNECTEUR R127.631.001



PERLE R280.760.000



CABLES : -

CHARACTERISTICS

NOMINAL IMPEDANCE	50 Ω
FREQUENCY RANGE	0-46 GHz
TEMPERATURE RATING	-65/+165 °C
VSWR	1.05 + .006 x F(GHz)Maxi
RF INSERTION LOSS	- \sqrt{F} (GHz) dB Maxi
VOLTAGE RATING	- Vrms Max
DIELECTRIC WITHSTANDING VOLTAGE	750 Vrms min
INSULATION RESISTANCE	5000 M Ω min
HERMETIC SEAL	- oo/s - Atm.cm3/s
LEAKAGE (pressurized only)	- psi - MPa
WEIGHT	0 Oz - g

STANDARDISATION

CABLE RETENTION	0 lb min N
CENTER CONTACT RETENTION	
Axial force - mating end	0 lb min N
Axial force - opposite end	0 lb min N
Torque (Min)	0 inch.oz cm.N
RECOMMENDED TORQUES	
Mating	0 inch.lb cm.N
Panel nut	0 inch.lb cm.N
Clamp nut	0 inch.lb cm.N

CONSTRUCTION

CONNECTOR PARTS	MATERIALS	FINISH
BODY	STAINLESS STEEL	PASSIVATED
OUTER CONTACT	-	-
CENTER CONTACT	BERYLLIUM COPPER	GOLD
INSULATOR	KAPTON	-
-	-	-
-	-	-
-	-	-
-	-	-
-	-	-

ISSUE	REVISION No	DESCRIPTION	FY	DATE
.
.
.
.

Initiated on 28-09-93

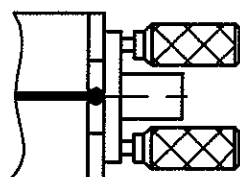
Superseded on - - - -

The information given here is subject to change without notice. Design changes may be in order to improve the product.

**SOUDURE DE LA PERLE DE VERRE ET MONTAGE DE L'EMBASE
SMA 2.9 A PLATINE CARREE SUR LE BOITIER MICROSTRIP .**

**SOLDERING OF THE GLASS BEAD AND MOUNTING OF THE
SMA 2.9 ON THE MICROSTRIP BOX .**

**SOUDURE DE LA PERLE DE VERRE
SOLDERING OF THE GLASS BEAD**



- Mise en place de la perle de verre R280 760 dans le boîtier. Le maintenir en place à l'aide du positionneur R282 746 .

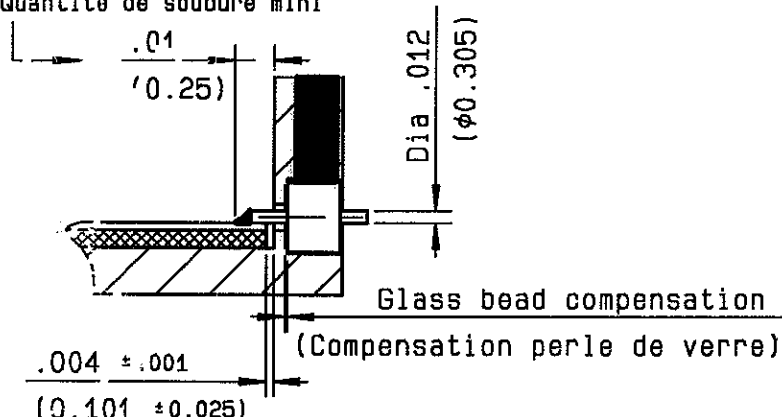
- Adjustment of the R280 760 glass bead in the box keep it in position thanks to R282 746 locator pin .

**POSITION DE LA PERLE DE VERRE APRES SOUDURE
POSITION OF THE GLASS BEAD AFTER SOLDERING**

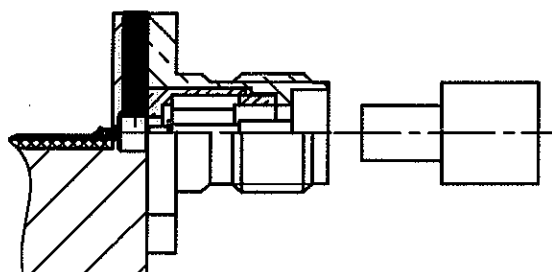
- Verifier la qualite de la soudure ainsi que la position de la perle de verre dans le boîtier .

- Check the quality of the soldering , as well as the position of the glass bead in the box .

Minimum soldering quantity
Quantite de soudure mini



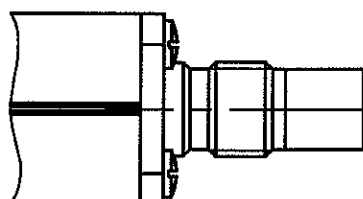
**MONTAGE DE L'EMBASE SUR BOITIER MICROSTRIP
MOUNTING OF THE FLANGE ON MICROSTRIP BOX**



- Monter la douille et la tague sur l'axe de la perle de verre . Monter le calibre de positionnement R282 860 pour assurer une bonne concentricité .

- Mount the socket and the ring on the axis of the glass bead . Mount the R282 860 position gauge on the flange to ensure a good concentricity .

**VISSAGE DE L'EMBASE SUR LE BOITIER
SCREWING OF THE FLANGE ON THE BOX**



- Visser l'embase sur le boîtier microstrip .

- Screw the flange on the microstrip box .