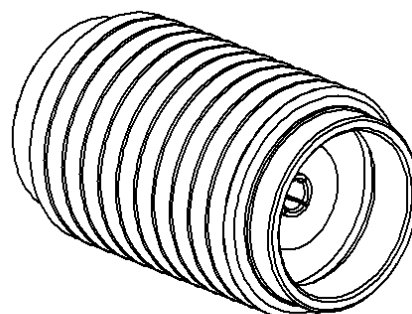
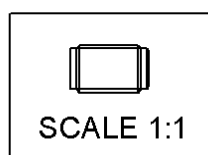
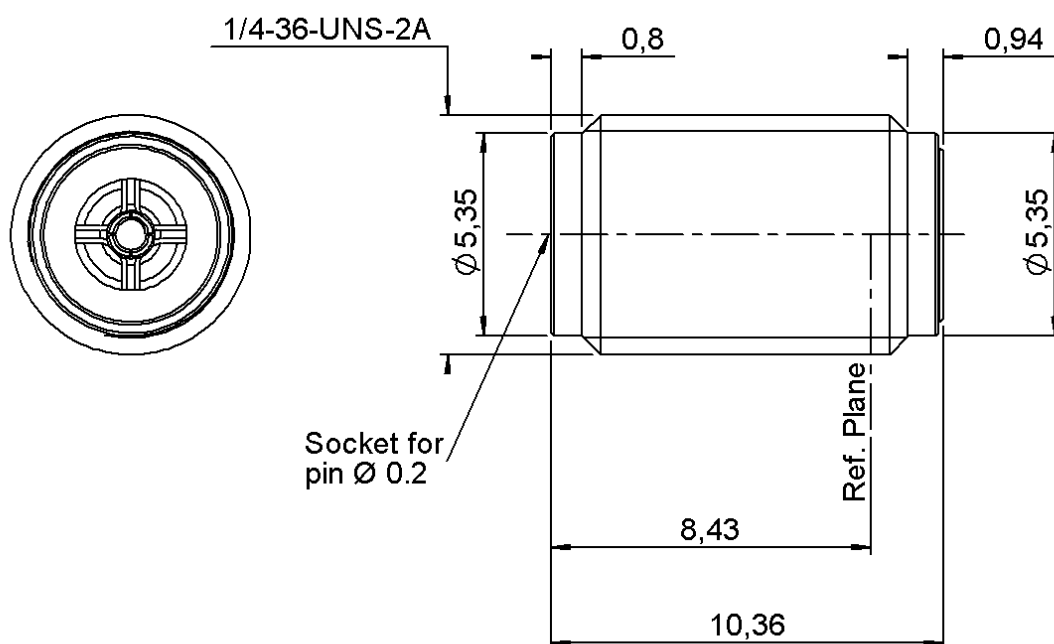


PAGE 1/2

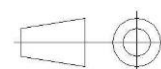
ISSUE 16-07-19A

SERIES SMA2.9

PART NUMBER R127601011



All dimensions are in mm. Tolerances according ISO 2768 m-H



COMPONENTS	MATERIALS	PLATING (µm)
Body	<b>STAINLESS STEEL</b>	<b>PASSIVATED</b>
Center contact	<b>BERYLLIUM COPPER</b>	<b>GOLD OVER NICKEL</b>
Outer contact		
Insulator	<b>POLYIMIDE KAPTON 500H</b>	
Gasket		
Others parts	<b>BRASS</b>	<b>GOLD OVER NICKEL</b>
-	-	-
-	-	-

PAGE 2/2

ISSUE 16-07-19A

SERIES SMA2.9

PART NUMBER R127601011

## PACKAGING

Standard	Unit	Other
1	Contact us	Contact us

## ELECTRICAL CHARACTERISTICS

Impedance		50	Ω
Frequency		0-46	GHz
VSWR	1.05 +	0,0060	x F(GHz) Maxi
Insertion loss		0.07	√F(GHz) dB Maxi
RF leakage	- (	NA	- F(GHz) dB Maxi
Voltage rating		250	Veff Maxi
Dielectric withstanding voltage		750	Veff mini
Insulation resistance		5000	MΩ mini

## MECHANICAL CHARACTERISTICS

Center contact retention			
Axial force – Mating End		15	N mini
Axial force – Opposite end		15	N mini
Torque		NA	N.cm mini

Recommended torque			
Mating		NA	N.cm
Panel nut		190	N.cm

Mating life		500	Cycles mini
Nominal Weight		1,8000	g
(Add +15% for max weight)			

## ENVIRONMENTAL

Operating temperature	-65/+165	°C
Hermetic seal	NA	Atm.cm3/s
Panel leakage	NA	

## SPECIFICATION

## OTHER CHARACTERISTICS

Assembly instruction:

Others: