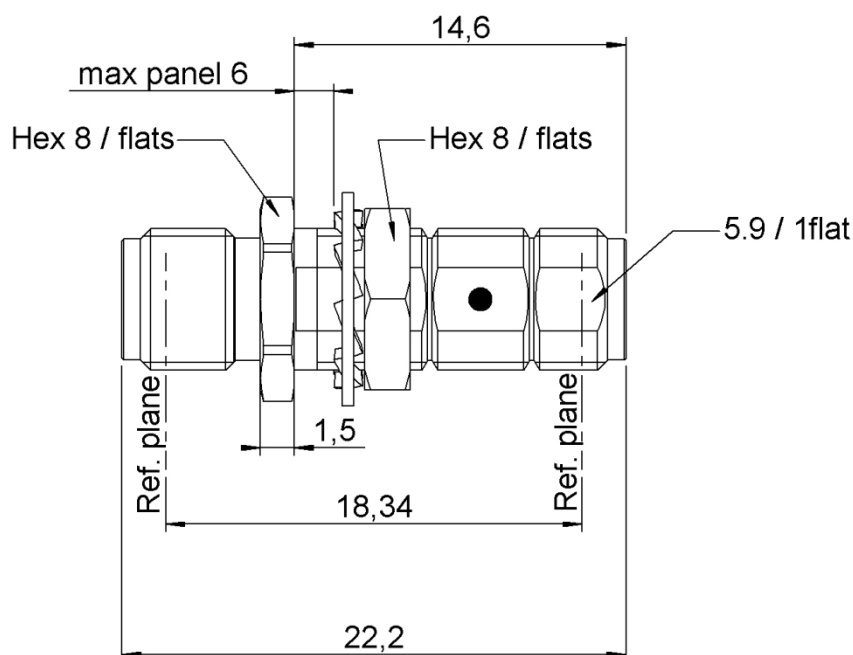


PAGE 1/2

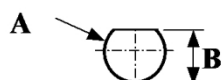
ISSUE  
**07-09-23R**

SERIES **SMA**

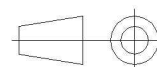
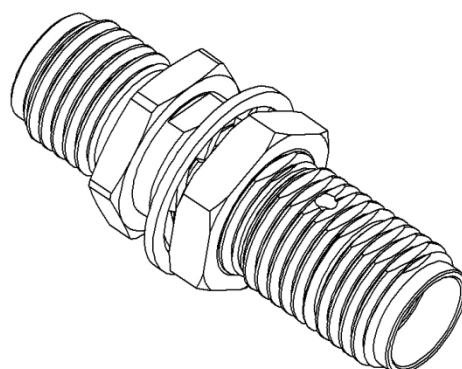
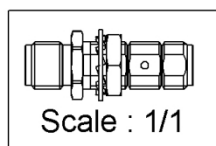
PART NUMBER **R125720000**



**PANEL CUT OUT**



mm		
	Maxi	mini
A	6.5	6.4
B	6.1	6



All dimensions are in mm. Tolerances according ISO 2768 m-H

COMPONENTS	MATERIALS	PLATING (µm)
Body	<b>STAINLESS STEEL.</b>	<b>GOLD OVER NICKEL</b>
Center contact	<b>BERYLLIUM COPPER</b>	<b>GOLD OVER NICKEL</b>
Outer contact	-	-
Insulator	<b>PTFE</b>	-
Gasket	-	-
Others parts	<b>BRASS</b>	<b>GOLD OVER NICKEL</b>
-	-	-
-	-	-

PAGE 2/2	ISSUE <b>07-09-23R</b>	SERIES <b>SMA</b>	PART NUMBER <b>R125720000</b>
----------	---------------------------	-------------------	-------------------------------

## PACKAGING

Standard	Unit	Other
<b>100</b>	<b>Contact us</b>	<b>Contact us</b>

## ELECTRICAL CHARACTERISTICS

Impedance		<b>50</b>	Ω
Frequency		<b>0-18</b>	GHz
VSWR	<b>1.05</b>	<b>+</b>	<b>0,0050</b> x F(GHz) Maxi
Insertion loss		<b>0.07</b>	√F(GHz) dB Maxi
RF leakage	- (	<b>60</b>	- F(GHz)) dB Maxi
Voltage rating		<b>500</b>	Veff Maxi
Dielectric withstanding voltage		<b>1000</b>	Veff mini
Insulation resistance		<b>5000</b>	MΩ mini

## MECHANICAL CHARACTERISTICS

Center contact retention			
Axial force – Mating End		<b>27</b>	N mini
Axial force – Opposite end		<b>27</b>	N mini
Torque		<b>2.8</b>	N.cm mini

Recommended torque			
Mating		<b>NA</b>	N.cm
Panel nut		<b>150</b>	N.cm

Mating life		<b>500</b>	Cycles mini
Nominal Weight		<b>3,5500</b>	g
(Add +15% for max weight)			

## ENVIRONMENTAL

Operating temperature	<b>*-65/+165</b>	°C
Hermetic seal	<b>NA</b>	Atm.cm3/s
Panel leakage	<b>NA</b>	

## SPECIFICATION

## OTHER CHARACTERISTICS

Assembly instruction:

Others:

**\*Max temperature under limited load : 165°C**

**\*Max temperature under a max load of 27N : 135°C**