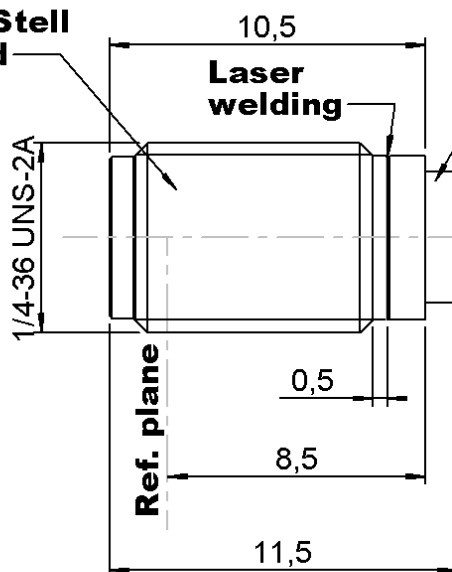


SCREW ON FEMALE RECEPTACLE
HERMETIC-WITH CYLINDRICAL CONTACT

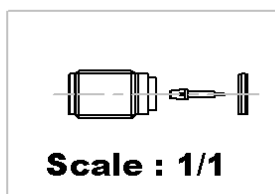
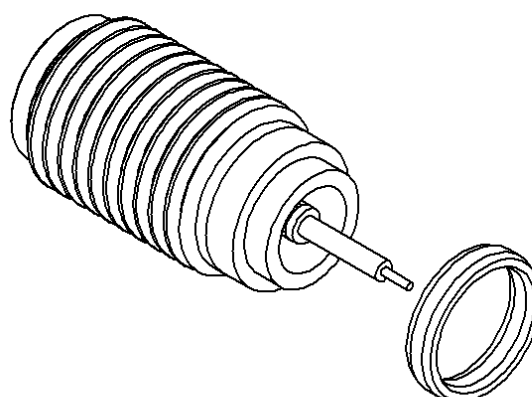
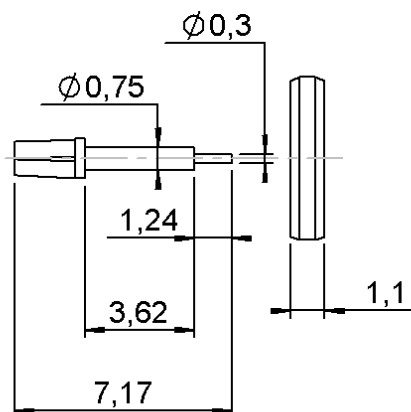
R125.609.182

Series : SMA

Body
Stainless Steel
passivated



Sleeve
Dilver P1
Nickel



All dimensions are in mm.



COMPONENTS	MATERIALS	PLATING (μm)
BODY	STAINLESS STEEL	PASSIVATION
CENTER CONTACT	BERYLLIUM COPPER	GOLD 1.3 OVER NICKEL2
OUTER CONTACT	-	-
INSULATOR	PTFE+GLASS BEAD	-
GASKET	A-G4MC	-
OTHERS PARTS	-	-
SLEEVE	DILVER P1	NICKEL2
GLASS BEAD AXIS	DILVER P1	GOLD 0.2 over NICKEL2

Issue : 1942 B

In the effort to improve our products, we reserve the right to make changes judged to be necessary.

RADIAL 

SCREW ON FEMALE RECEPTACLE
HERMETIC-WITH CYLINDRICAL CONTACT

R125.609.182

Series : SMA

PACKAGING

Standard	Unit	Other
100	'W' option	Contact us

SPECIFICATION**ELECTRICAL CHARACTERISTICS**

Impedance	50	Ω
Frequency	0-26.5	GHz
VSWR	1.1 + 0,0100	x F(GHz) Maxi
Insertion loss	0.3	$\sqrt{F}(\text{GHz})$ dB Maxi
RF leakage	90*	- F(GHz)) dB Maxi
Voltage rating	500	Veff Maxi
Dielectric withstanding voltage	1000	Veff mini
Insulation resistance	5000	M Ω mini

ENVIRONMENTAL

Operating temperature	-65/+165	$^{\circ}\text{C}$
Hermetic seal	10-8	Atm.cm3/s
Panel leakage	NA	

OTHER CHARACTERISTICSAssembly instruction **NA**

Others :

*Coaxial transmission line only

MECHANICAL CHARACTERISTICS

Center contact retention	
Axial force – Mating end	27 N mini
Axial force – Opposite end	27 N mini
Torque	2.8 N.cm mini
Recommended torque	
Mating	NA N.cm
Panel nut	280 N.cm
Mating life	500 Cycles mini
Weight	1,6400 g

Issue : 1942 B

In the effort to improve our products, we reserve the right to make changes judged to be necessary.

RADIAL 

Series : **SMA**

ING

1/4 - 36 UNS - 2B

⊙ ⌀ 0.08 A

⌀ 6.6

5.35 ± 0.1

3.5 pour info

⌀ 5.54 ± 0.025

0.8

A

45°

3.3 mini

⌀ 1.73 ± 0.025

Technical drawing showing a cross-section of a panel connection. A bolt is inserted through the panel, secured by a lock washer and a lock nut. The lock washer is labeled "solder" and the panel is labeled "panel".

Beware there is not too much solder.

RADIAL 