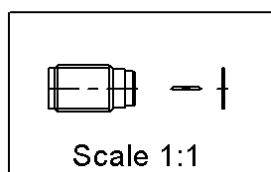
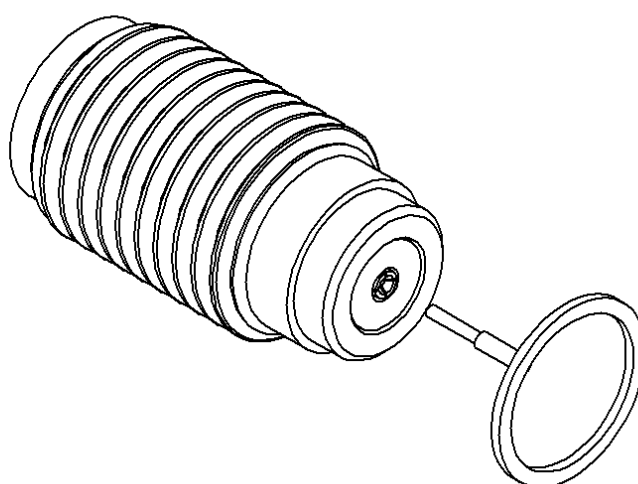
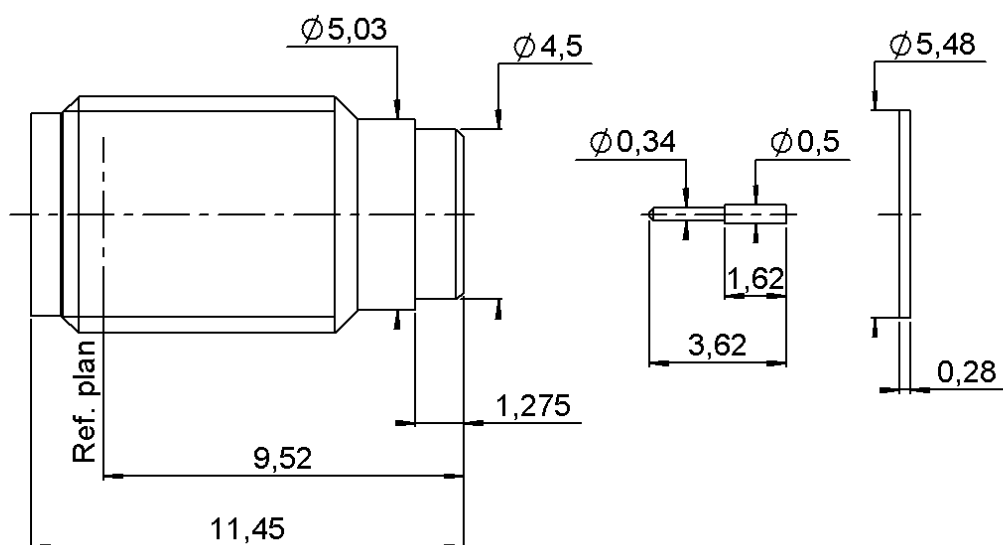


**SCREW ON HERMETIC RECEPTACLE**

**REMOVABLE CONTACT**

**R125.605.411**

Series : SMA



All dimensions are in mm.



COMPONENTS	MATERIALS	PLATING (μm)
BODY	STAINLESS STEEL	PASSIVATED.
CENTER CONTACT	BERYLLIUM COPPER	GOLD 2.5 OVER COPPER 2.5
OUTER CONTACT	-	-
INSULATOR	PTFE	-
GASKET	SILICONE RUBBER	TIN 3
OTHERS PARTS	BRASS	-
-	-	-
-	-	-

Issue : 1942 A

In the effort to improve our products, we reserve the right to make changes judged to be necessary.

**RADIAL** 

**SCREW ON HERMETIC RECEPTACLE****R125.605.411****REMOVABLE CONTACT**

Series : SMA

**PACKAGING**

Standard	Unit	Other
<b>100</b>	-	<b>Contact us</b>

**SPECIFICATION****ELECTRICAL CHARACTERISTICS**

Impedance	<b>50</b>	$\Omega$
Frequency	<b>0-18</b>	GHz
VSWR	<b>1.2 + 0,0000</b>	x F(GHz) Maxi
Insertion loss	<b>0.07</b>	$\sqrt{F}(\text{GHz})$ dB Maxi
RF leakage	- ( <b>NA</b> )	- F(GHz)) dB Maxi
Voltage rating	<b>450</b>	Veff Maxi
Dielectric withstanding voltage	<b>1400</b>	Veff mini
Insulation resistance	<b>5000</b>	M $\Omega$ mini

**ENVIRONMENTAL**

Operating temperature	<b>-65/+165</b>	$^{\circ}\text{C}$
Hermetic seal	<b>10-7</b>	Atm.cm3/s
Panel leakage	<b>NA</b>	

**OTHER CHARACTERISTICS**

Assembly instruction

Others :

**MECHANICAL CHARACTERISTICS**

Center contact retention		
Axial force – Mating end	<b>15</b>	N mini
Axial force – Opposite end	<b>15</b>	N mini
Torque	<b>NA</b>	N.cm mini
Recommended torque		
Mating	<b>NA</b>	N.cm
Panel nut	<b>280</b>	N.cm
Mating life	<b>500</b>	Cycles mini
Weight	<b>1,4300</b>	g

Issue : 1942 A

In the effort to improve our products, we reserve the right to make changes judged to be necessary.

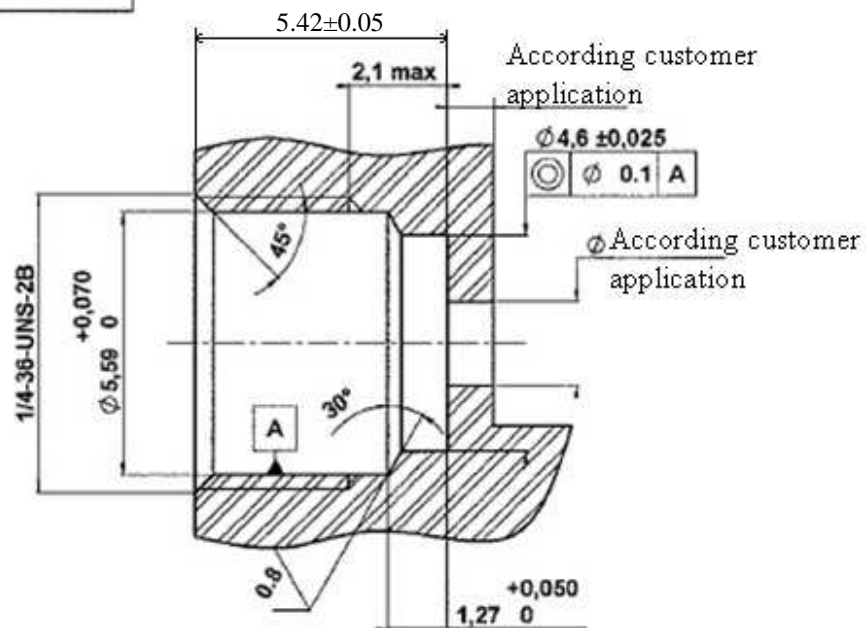
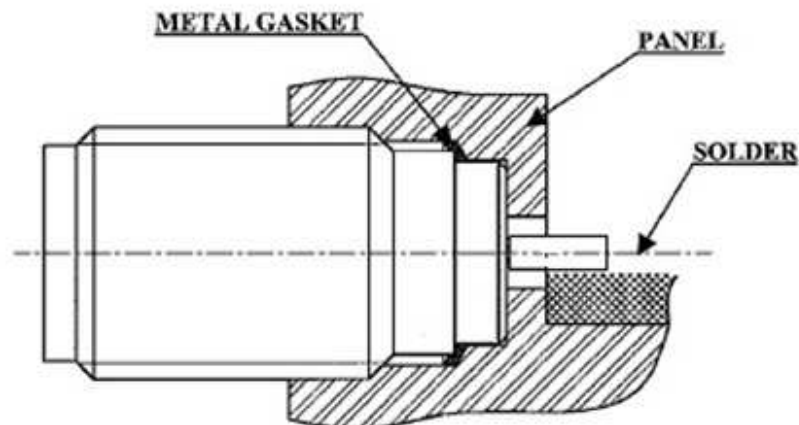
**RADIAL** 

## SCREW ON HERMETIC RECEPTACLE

## REMOVABLE CONTACT

**R125.605.411**

Series : SMA

**PANEL DRILLING****RECOMMENDED MOUNTING HOLE DETAIL**

Assemble metal gasket onto connector. Screw both parts into the housing.  
 Tighten the connector up to 280 Ncm +or- 10 Ncm (use special tooling set RADIALL R282.341.012).  
 Thus the connection hermeticity is guaranteed.  
 Then solder the pin on the track.  
 Beware there is not too much solder.

Issue : 1942 A

In the effort to improve our products, we reserve the right to make changes judged to be necessary.

**RADIALL** 