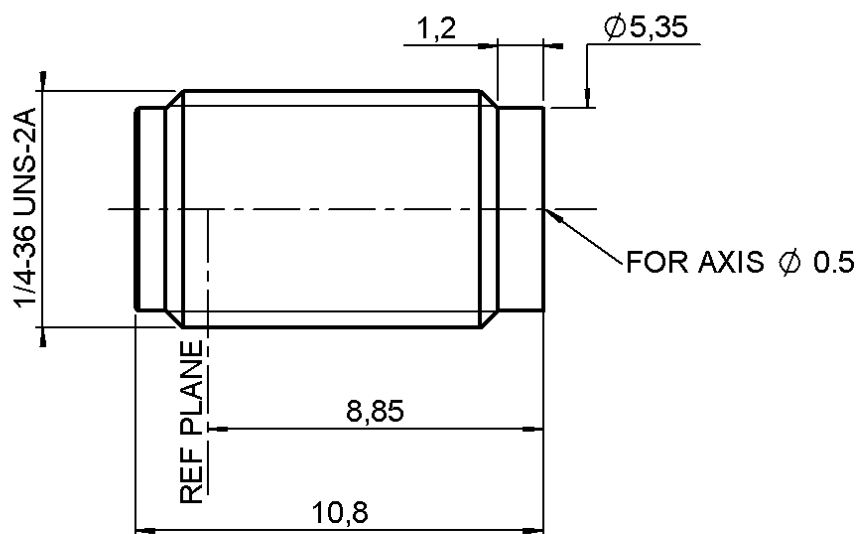


UNIVERSAL SCREW JACK RECEPTACLE

FOR 0.5 MM DIA

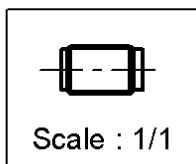
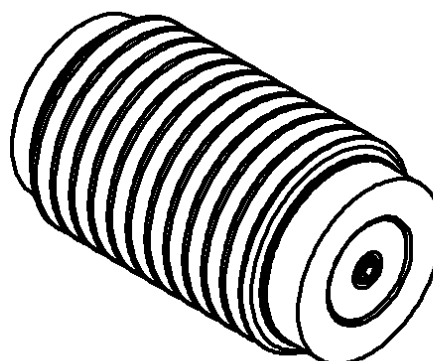
R125.556.031

Series : SMA



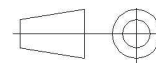
Se monte en application
hermetique avec la perle
de verre 280.755
(voir page 3 et 4)

Mount it with 280.755
Glass bead for hermetic
application (see pages
3 to 4)



Scale : 1/1

All dimensions are in mm.



COMPONENTS	MATERIALS	PLATINGS (μm)
BODY	STAINLESS STEEL	PASSIVATED.
CENTER CONTACT	BERYLLIUM COPPER	GOLD 1.3 OVER NICKEL 2
OUTER CONTACT	-	
INSULATOR	PTFE	
GASKET	-	
OTHERS PARTS	-	
-	-	
-	-	

Issue : 0431 A

In the effort to improve our products, we reserve the right to make changes judged to be necessary.



UNIVERSAL SCREW JACK RECEPTACLE**FOR 0.5 MM DIA****R125.556.031**

Series : SMA

PACKAGING

Standard	Unit	Other
100	'W' option	Contact us

SPECIFICATION**ELECTRICAL CHARACTERISTICS**

Impedance		50 Ω
Frequency		0-18 GHz
VSWR	1.1 +	0.010 x F(GHz) Maxi
Insertion loss		0.07* $\sqrt{F(\text{GHz})}$ dB Maxi
RF leakage	- (60 - F(GHz)) dB Maxi
Voltage rating		500 Veff Maxi
Dielectric withstanding voltage		1000 Veff mini
Insulation resistance		5000 M Ω mini

ENVIRONMENTAL

Operating temperature	-65/+125 ° C
Hermetic seal	NA Atm.cm3/s
Panel leakage	NA

OTHERS CHARACTERISTICS

Assembly instruction

Others :

* Coaxial Transmission Line Only

MECHANICAL CHARACTERISTICS

Center contact retention	
Axial force – Mating end	27 N mini
Axial force – Opposite end	27 N mini
Torque	2.8 N.cm mini
Recommended torque	
Mating	NA N.cm
Panel nut	190 N.cm
Mating life	500 Cycles mini
Weight	1.611 g

Issue : 0431 A

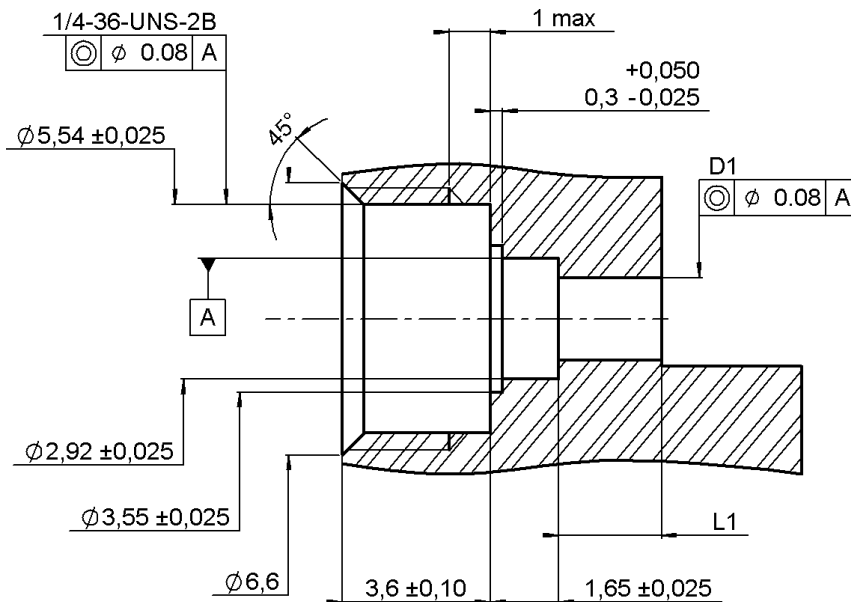
In the effort to improve our products, we reserve the right to make changes judged to be necessary.

**RADIALL®**

UNIVERSAL SCREW JACK RECEPTACLE
FOR 0.5 MM DIA

R125.556.031

Series : SMA

MOUNTING HOLE :

THE D1 AND L1 DIMENSIONS HAVE TO BE DETERMINED ACCORDING TO EACH USING SITUATION.

WE ADVISE IN THE TWO FOLLOWING SITUATIONS : (SEE PAGE 4/4)

- USING OF THE R280.469.010 REMOVABLE SOCKET :
 $D1 = 2 \pm 0.02$ $L1 = 2.5 \pm 0.1$
- THE BEAD PIN IS DIRECTLY WELDED ON THE TRACK.
 $D1 = 1.08 \pm 0.02$ $L1 = 1 \text{ a } 4$ ACCORDING TO THE CUSTOMER'S DESIGN CRITERIA.

Issue : 0431 A

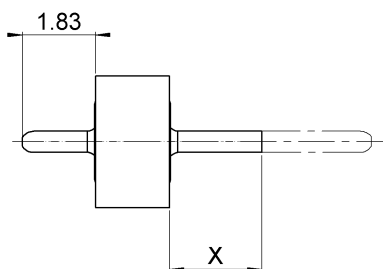
In the effort to improve our products, we reserve the right to make changes judged to be necessary.



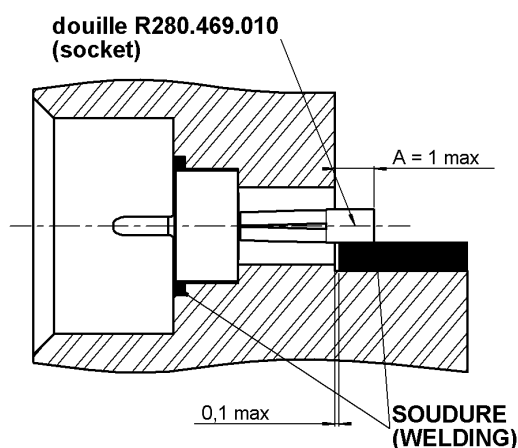
UNIVERSAL SCREW JACK RECEPTACLE FOR 0.5 MM DIA

R125.556.031

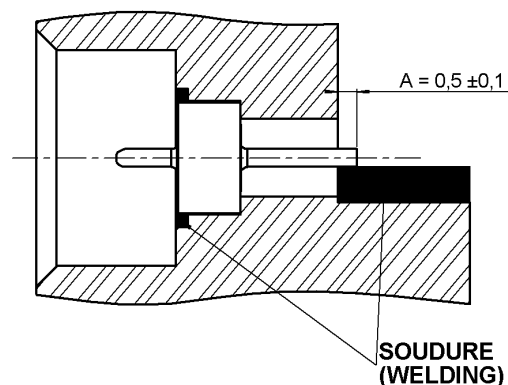
Series : SMA

MOUNTING

$$X = 2 \pm 0.05$$



$$X = L1 + A$$

**GLASS BEAD**

- 1- Adjust X by cutting the pin if necessary.
- 2- Introduce the glass bead into its housing as here above (with the mounted socket)
- 3- Weld the ring by putting a welding wire in the groove.
- 4- Weld the pin (or socket) on the track. Beware of putting too much welding

IMPORTANT : for maximum RF characteristics the link track/pin must be as thin as possible.

We advise you to respect rigorously the A dimension, by welding accurately the bead pin directly on the track (right drawing).

CONNECTOR

-Screw the connector into the housing. Tighten it up to 190 cmN + ou -10 cmN

(use special tooling set RADIAL R282.341.010).

Issue : 0431 A

In the effort to improve our products, we reserve the right to make changes judged to be necessary.

