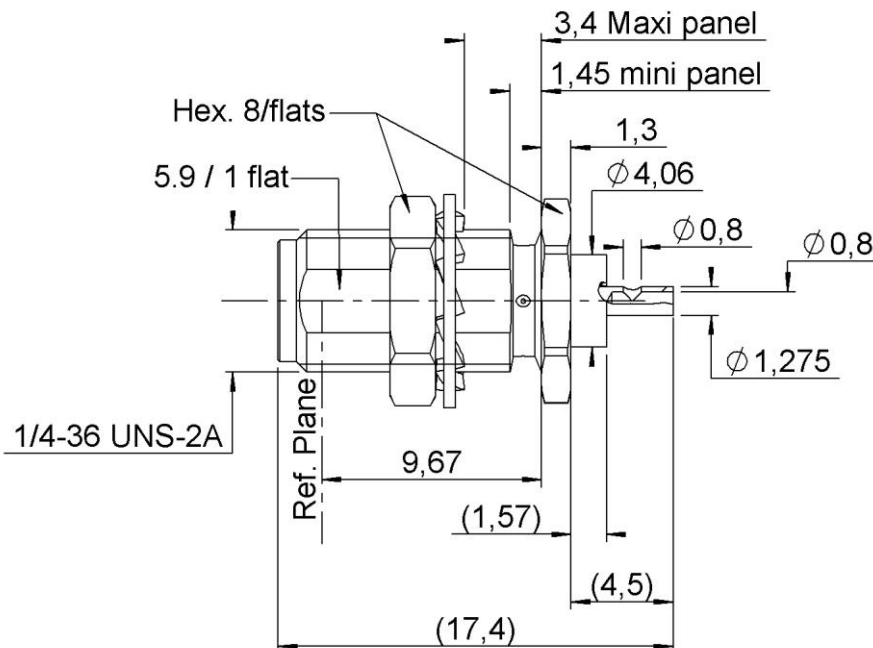


PAGE 1/2

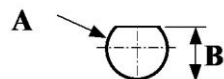
ISSUE  
19-01-22S

SERIES **SMA**

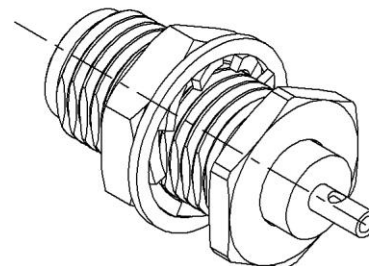
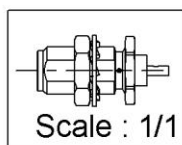
PART NUMBER **R125553000**



### PANEL CUT OUT

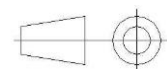


	mm	
	Maxi	mini
A	6.5	6.4
B	6.14	6



CECC 22111-073-01

All dimensions are in mm. Tolerances according ISO 2768 m-H



COMPONENTS	MATERIALS	PLATING (µm)
Body	<b>STAINLESS STEEL</b>	<b>GOLD OVER NICKEL</b>
Center contact	<b>BERYLLIUM COPPER</b>	<b>GOLD OVER NICKEL</b>
Outer contact	-	-
Insulator	<b>PTFE</b>	-
Gasket	-	-
Others parts	<b>BRASS</b>	<b>GOLD OVER NICKEL</b>
-	-	-
-	-	-

PAGE 2/2	ISSUE 19-01-22S	SERIES <b>SMA</b>	PART NUMBER <b>R125553000</b>
----------	--------------------	-------------------	-------------------------------

### PACKAGING

Standard	Unit	Other
<b>100</b>	<b>Contact us</b>	<b>Contact us</b>

### ELECTRICAL CHARACTERISTICS

Impedance	<b>50</b>	$\Omega$
Frequency	<b>0-18</b>	GHz
VSWR	<b>*1.04 + 0,0050</b>	x F(GHz) Maxi
Insertion loss	<b>*0.05</b>	$\sqrt{F}$ (GHz) dB Maxi
RF leakage	<b>90</b>	- F(GHz) dB Maxi
Voltage rating	<b>500</b>	Veff Maxi
Dielectric withstanding voltage	<b>1000</b>	Veff mini
Insulation resistance	<b>5000</b>	M $\Omega$ mini

### ENVIRONMENTAL

Operating temperature	<b>-65/+165</b>	°C
Hermetic seal	<b>NA</b>	Atm.cm3/s
Panel leakage	<b>NA</b>	

### MECHANICAL CHARACTERISTICS

Center contact retention		
Axial force – Mating End	<b>27</b>	N mini
Axial force – Opposite end	<b>27</b>	N mini
Torque	<b>2.8</b>	N.cm mini

### SPECIFICATION

Recommended torque		
Mating	<b>NA</b>	N.cm
Panel nut	<b>150</b>	N.cm

### OTHER CHARACTERISTICS

Mating life	<b>500</b>	Cycles mini
Nominal Weight (Add +15% for max weight)	<b>2,6000</b>	g

Assembly instruction:

Others:

**\* Coaxial Transmission Line Only**