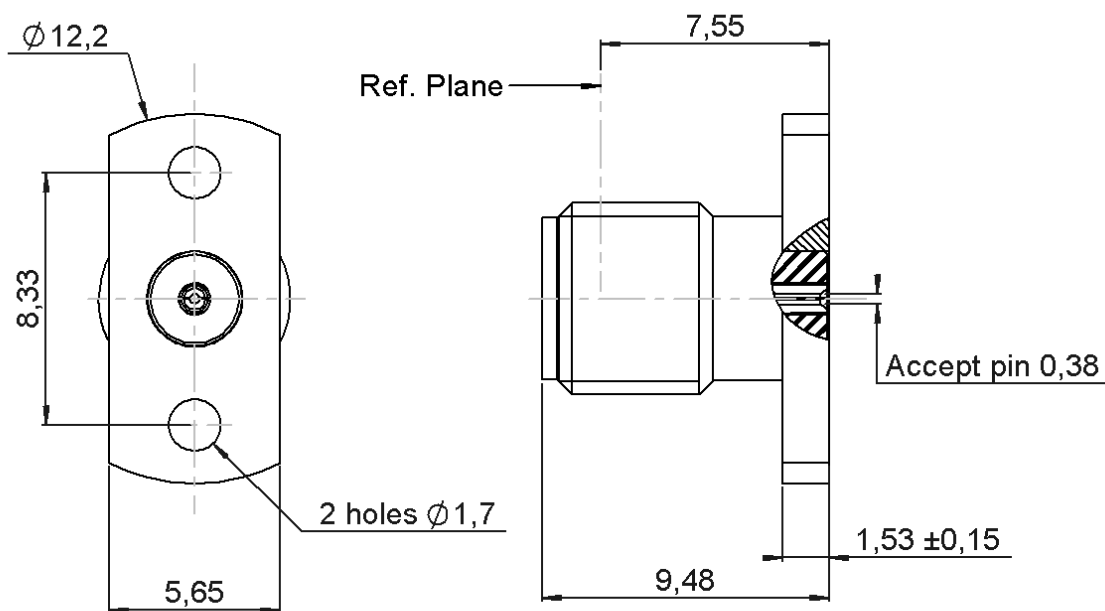


PAGE 1/2

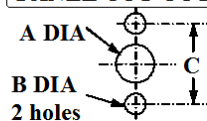
ISSUE 10-02-20A

SERIES SMA

PART NUMBER R125465551

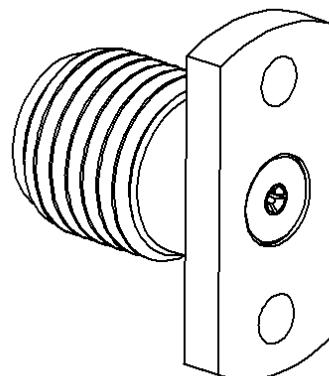
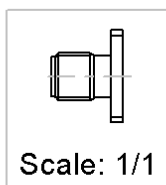


## PANEL CUT OUT

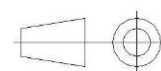


	mm	
	Maxi	mini
A	X	
B	1.8	1.7
C	8.38	8.28

X: According to application customer



All dimensions are in mm. Tolerances according ISO 2768 m-H



COMPONENTS	MATERIALS	PLATING (μm)
Body	<b>STAINLESS STEEL</b>	<b>PASSIVATED</b>
Center contact	<b>BERYLLIUM COPPER</b>	<b>GOLD OVER NICKEL</b>
Outer contact		
Insulator	<b>PTFE</b>	
Gasket		
Others parts		
-	-	-
-	-	-

PAGE 2/2

ISSUE 10-02-20A

SERIES SMA

PART NUMBER R125465551

## PACKAGING

Standard	Unit	Other
100	Contact us	Contact us

## ELECTRICAL CHARACTERISTICS

Impedance		50	Ω
Frequency		0-18	GHz
VSWR	*1.06	+	0,003 x F(GHz) Maxi
Insertion loss		*0.07	√F(GHz) dB Maxi
RF leakage	- (	NA	- F(GHz)) dB Maxi
Voltage rating		500	Veff Maxi
Dielectric withstanding voltage		1000	Veff mini
Insulation resistance		5000	MΩ mini

## ENVIRONMENTAL

Operating temperature	-65/+125	°C
Hermetic seal	NA	Atm.cm3/s
Panel leakage	NA	

## MECHANICAL CHARACTERISTICS

Center contact retention		
Axial force – Mating End	27	N mini
Axial force – Opposite end	27	N mini
Torque	NA	N.cm mini

Recommended torque	
Mating	N.cm
Panel nut	N.cm

Mating life	500	Cycles mini
Nominal Weight	1,550	g
(Add +15% for max weight)		

## SPECIFICATION

## OTHER CHARACTERISTICS

Others:

**\*Coaxial transmission line only**