

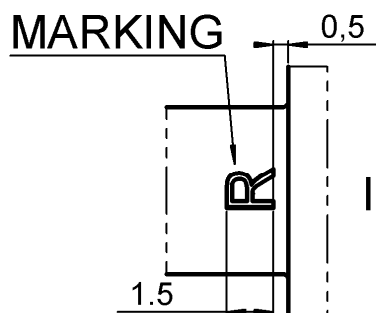
**FEMALE EDGE CARD RECEPTACLE**

**R123.444.827**

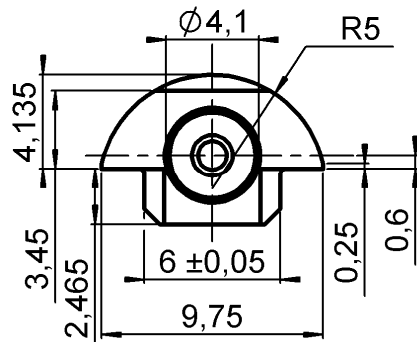
**REEL 300**

Series : QMA

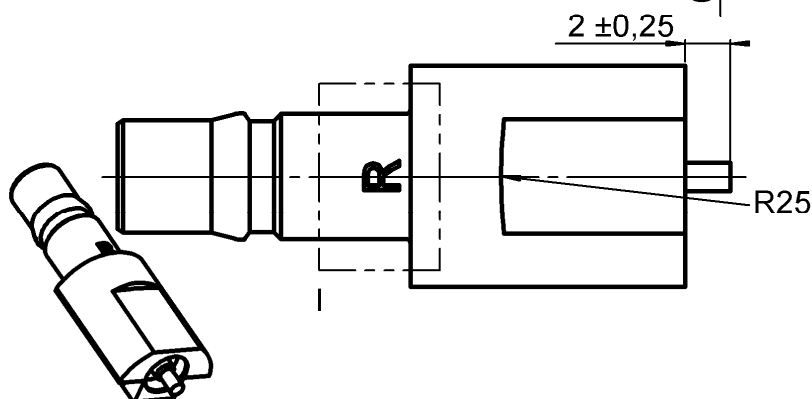
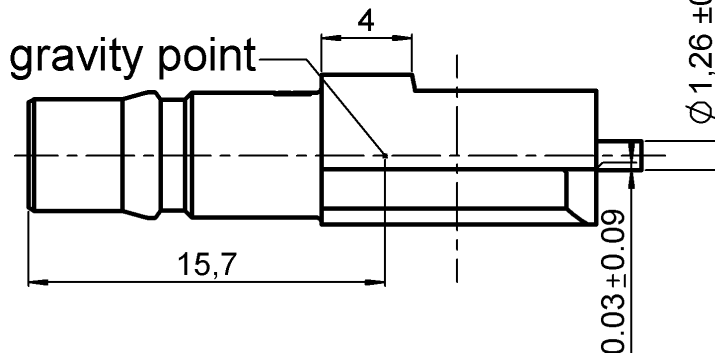
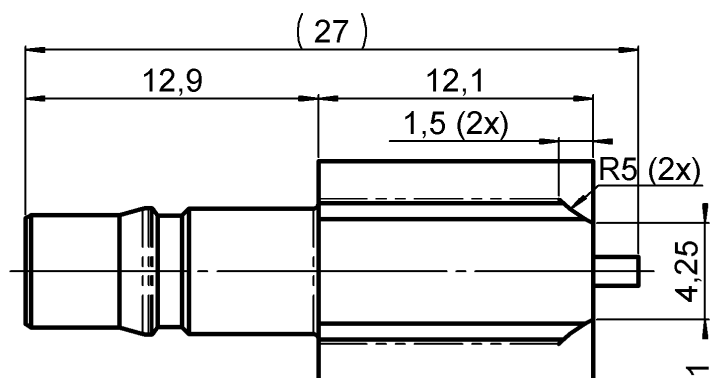
**MARKING**



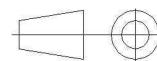
DÉTAIL I  
ECHELLE 4 : 1



**SCALE 1:1**



All dimensions are in mm.



COMPONENTS	MATERIALS	PLATINGS (µm)
BODY	BRASS	NPGR
CENTER CONTACT	BERYLLIUM COPPER	NPGR
OUTER CONTACT	-	-
INSULATOR	PTFE	-
GASKET	-	-
OTHERS PARTS	-	-
.	.	.
.	.	.

Issue : 0923 D

In the effort to improve our products, we reserve the right to make changes judged to be necessary.



**RADIALL**®

## FEMALE EDGE CARD RECEPTACLE

REEL 300

**R123.444.827**

Series : QMA

PACKAGING

Standard	Unit	Other
<b>300</b>		<b>Contact us</b>

SPECIFICATION

1301-RNT 408 2024 Uen rev. C

**ELECTRICAL CHARACTERISTICS**

Impedance	<b>50</b>	$\Omega$
Frequency	<b>0-6</b>	GHz
VSWR	<b>1.04 + 0,0200</b>	x F(GHz) Maxi*
Insertion loss	<b>0.05</b>	$\sqrt{F}(\text{GHz})$ dB Maxi
RF leakage	- ( <b>80</b> )	- F(GHz)) dB Maxi
Voltage rating	<b>500</b>	Veff Maxi
Dielectric withstanding voltage	<b>1000</b>	Veff mini
Insulation resistance	<b>5000</b>	M $\Omega$ mini

**ENVIRONMENTAL**

Operating temperature	<b>-40/+105</b>	$^{\circ}\text{C}$
Hermetic seal	<b>NA</b>	Atm.cm3/s
Panel leakage	<b>NA</b>	

**OTHERS CHARACTERISTICS**

Assembly instruction

Others :  
COAXIAL TRANSMISSION LINE ONLY**MECHANICAL CHARACTERISTICS**

Center contact retention	
Axial force – Mating end	<b>27</b> N mini
Axial force – Opposite end	<b>27</b> N mini
Torque	<b>NA</b> N.cm mini
Recommended torque	
Mating	<b>NA</b> N.cm
Panel nut	<b>NA</b> N.cm
Mating life	<b>100</b> Cycles mini
Weight	<b>4,6850</b> g

Issue : 0923 D

In the effort to improve our products, we reserve the right to make changes judged to be necessary.

**RADIALL**®

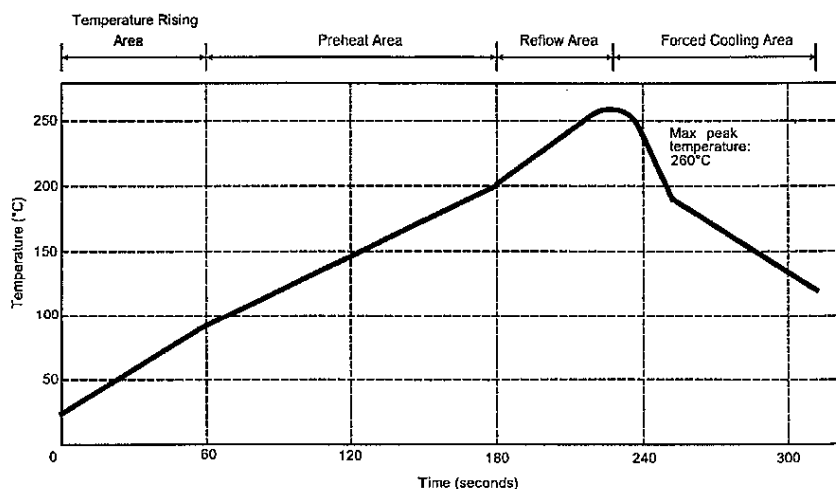
**FEMALE EDGE CARD RECEPTACLE****REEL 300****R123.444.827**

Series : QMA

**SOLDER PROCEDURE**

1. Deposit solder paste 'Sn Ag4 Cu0.5' on mounting zone by screen printing application. We recommend a low residue flux.  
We advise a thickness of 150 microm ( 5.850 microinch ). Verify that the edges of the zone are clean.
2. Placement of the receptacle on the mounting zone with an automatic machine of 'pick and place' type. A video camera is recommended for positioning of the component . Adhesive agents must not be used on the receptacle.
3. This process of soldering has been tested with convection oven .Below please find ,the typical profile to use.
4. The cleaning of printed circuit boards is not obliged .
5. Verification of solder joints and position of the component by visual inspection.

**NOTE** : The receptacle and the plug must not be mated before completion of this procedure

**TEMPERATURE PROFILE**

Parameter	Value	Unit
Temperature rising Area	1 - 4	°C/sec
Max Peak Temperature	260	°C
Max dwell time @260°C	10	sec
Min dwell time @235°C	20	sec
Max dwell time @235°C	60	sec
Temperature drop in cooling Area	-1 to - 4	°C/sec
Max dwell time above 100°C	420	sec

Issue : 0923 D

In the effort to improve our products, we reserve the right to make changes judged to be necessary.

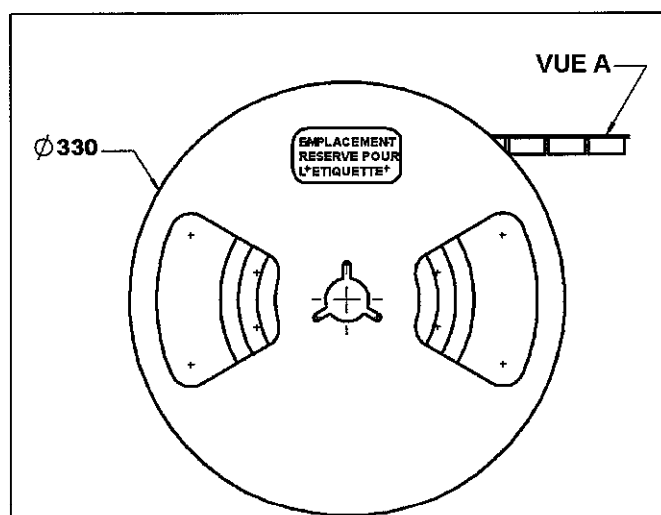


**FEMALE EDGE CARD RECEPTACLE**

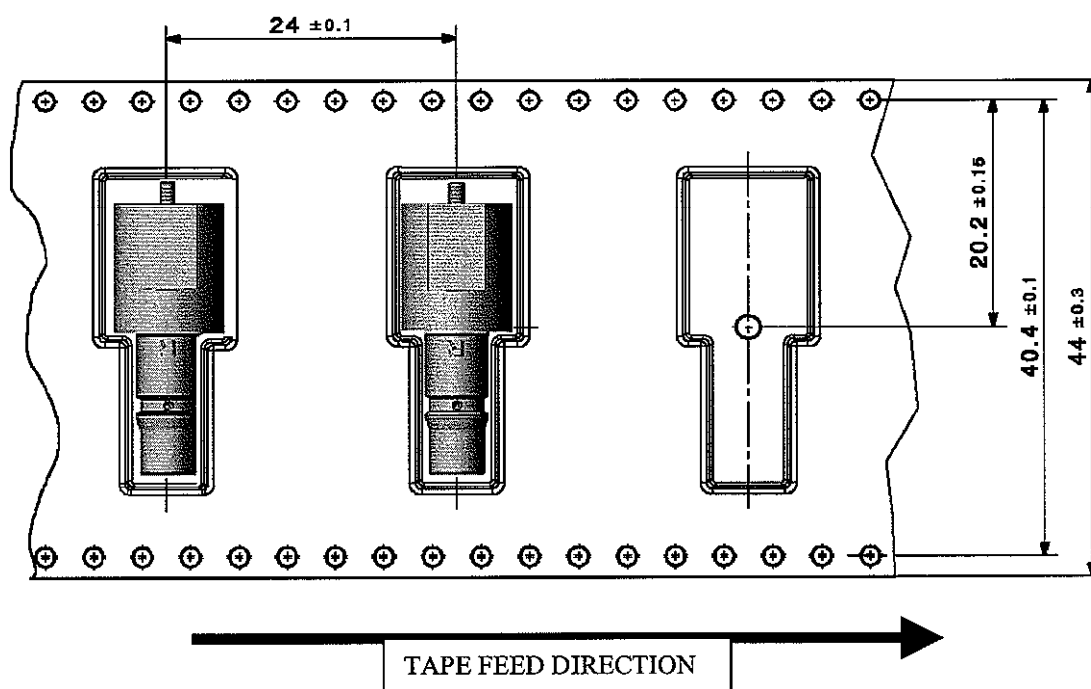
**REEL 300**

**R123.444.827**

Series : QMA



bobine Ech :0.7



**Issue : 0923 D**

In the effort to improve our products, we reserve the right to make changes judged to be necessary.



**RADIALL®**

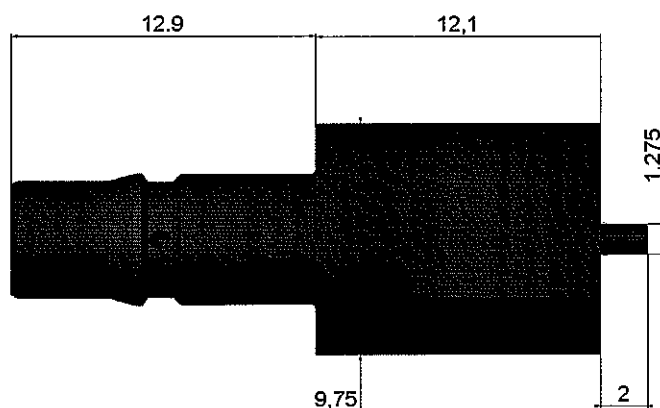
## FEMALE EDGE CARD RECEPTACLE

REEL 300

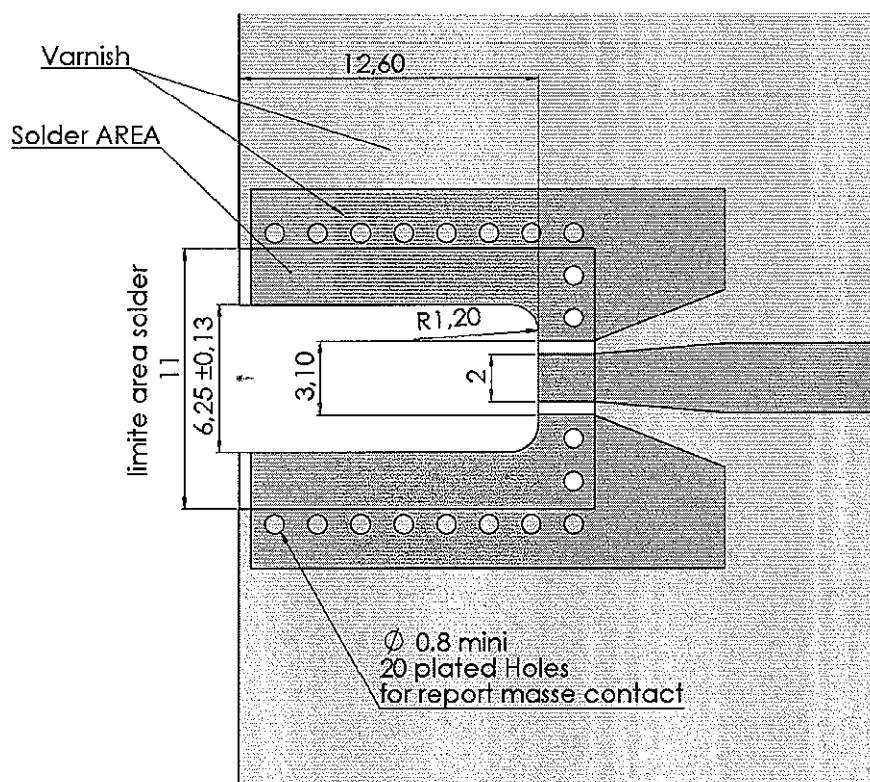
**R123.444.827**

Series : QMA

SHADOW FOR THE VIDEO CAMERA



PCB



Issue : 0923 D

In the effort to improve our products, we reserve the right to make changes judged to be necessary.

**RADIALL®**