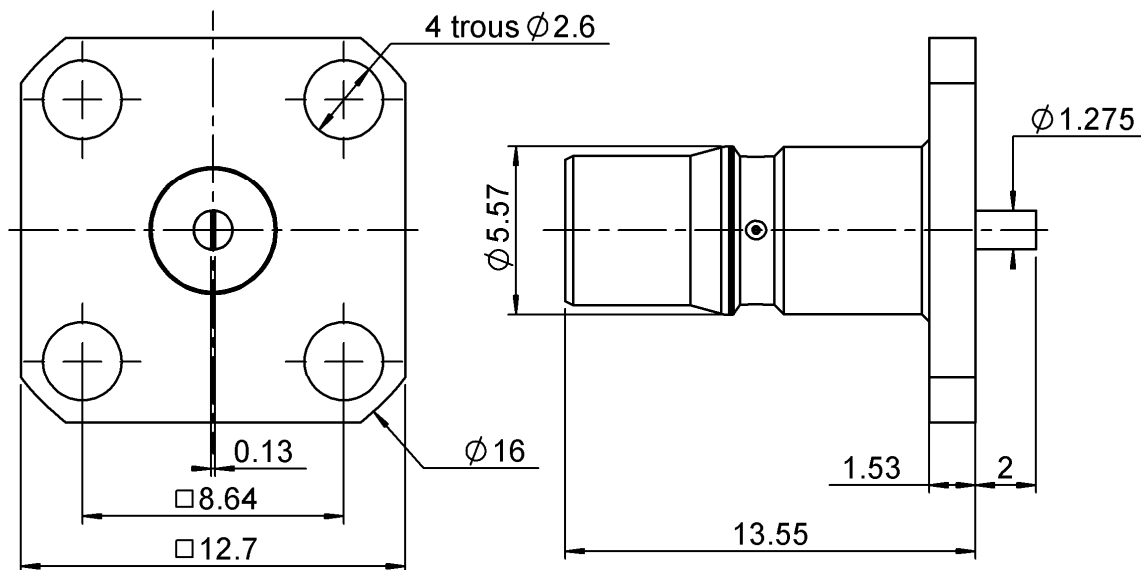


SQUARE FLANGE RECEPTACLE

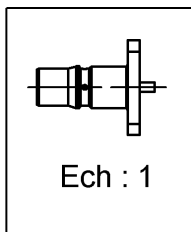
R123.415.167

Series : QMA

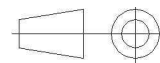
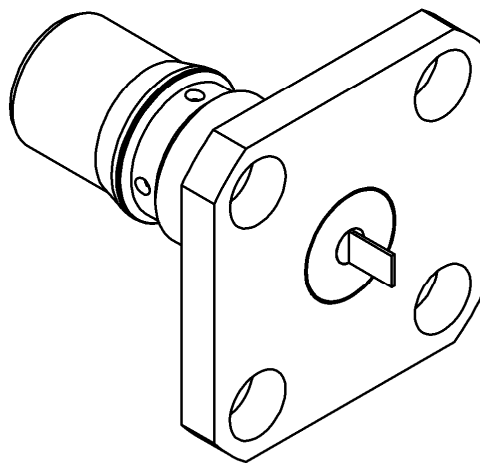


PANEL CUT OUT

mm		
	Maxi	mini
A	4.2	4.1
B	2.7	2.6
C	8.69	8.59



Ech : 1



All dimensions are in mm.

COMPONENTS	MATERIALS	PLATING (μm)
BODY	BRASS	NPGR
CENTER CONTACT	BERYLLIUM COPPER	GOLD 1.3 OVER COPPER 2.5
OUTER CONTACT		
INSULATOR	PTFE	
GASKET		
OTHERS PARTS		
-	-	-
-	-	-

Issue : 0924 A

In the effort to improve our products, we reserve the right to make changes judged to be necessary.



SQUARE FLANGE RECEPTACLE**R123.415.167**

Series : QMA

PACKAGING

Standard	Unit	Other
100	'W' option	Contact us

SPECIFICATION**ELECTRICAL CHARACTERISTICS**

Impedance	50	Ω
Frequency	0-6	GHz
VSWR	1.04 + 0,0050	x F(GHz) Maxi
Insertion loss	0.05	$\sqrt{F}(\text{GHz})$ dB Maxi
RF leakage	- (*80)	- F(GHz)) dB Maxi
Voltage rating	500	Veff Maxi
Dielectric withstanding voltage	1000	Veff mini
Insulation resistance	5000	M Ω mini

ENVIRONMENTAL

Operating temperature	-40/+105	$^{\circ}\text{C}$
Hermetic seal	NA	Atm.cm3/s
Panel leakage	NA	

OTHER CHARACTERISTICSAssembly instruction **NA**

Others :

*RF leakage:Interf. only:3<F<6GHz:>70dB

Intermod.: -120dBc at 1.8GHz(2x20W)

MECHANICAL CHARACTERISTICS

Center contact retention	
Axial force – Mating end	27 N mini
Axial force – Opposite end	27 N mini
Torque	2.8 N.cm mini

Recommended torque

Mating	NA N.cm
Panel nut	NA N.cm

Mating life	100 Cycles mini
Weight	2,9050 g

Issue : 0924 A

In the effort to improve our products, we reserve the right to make changes judged to be necessary.

