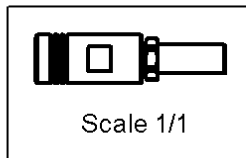
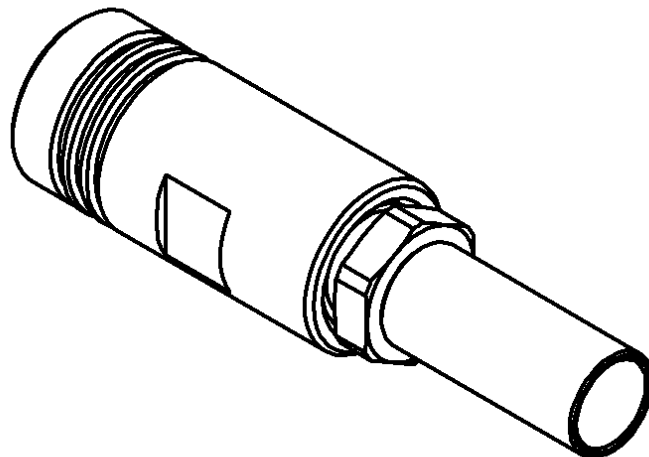
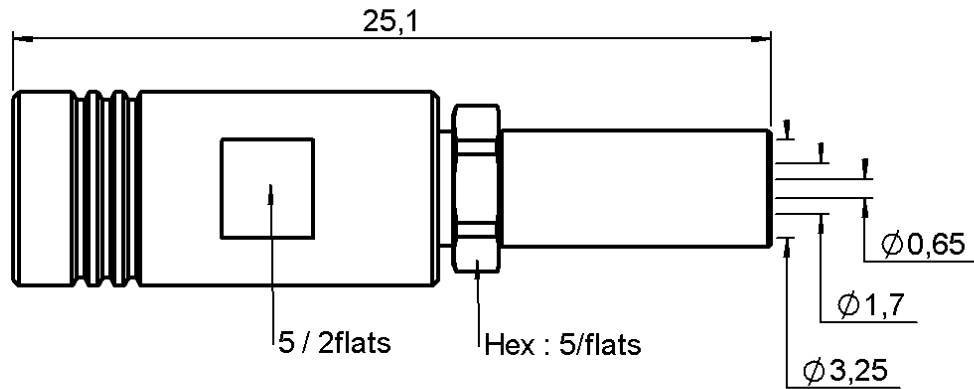


STRAIGHT PLUG CRIMP TYPE

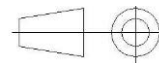
CABLE 2.6/50+75 S

R114.075.000

Series : **SMB**



All dimensions are in mm.



COMPONENTS	MATERIALS	PLATINGS (µm)
BODY	BRASS	GOLD 0.2 OVER NICKEL 2
CENTER CONTACT	BERYLLIUM COPPER	GOLD 1.3 OVER NICKEL 2
OUTER CONTACT	BERYLLIUM COPPER	GOLD 0.2 OVER NICKEL 2
INSULATOR	PTFE	
GASKET	-	
OTHERS PARTS	BRASS	GOLD 0.2 OVER NICKEL 2
-	-	-
-	-	-

Issue : 01-02-22 C

In the effort to improve our products, we reserve the right to make changes judged to be necessary.



STRAIGHT PLUG CRIMP TYPE**CABLE 2.6/50+75 S****R114.075.000**Series : **SMB****PACKAGING**

Standard	Unit	Other
100	'W' option	Contact us

ELECTRICAL CHARACTERISTICS

Impedance	50	Ω
Frequency	0-4	GHz
VSWR	1.25 + 0.040	x F(GHz) Maxi
Insertion loss	0.25	$\sqrt{F}(\text{GHz})$ dB Maxi
RF leakage	57	- F(GHz)) dB Maxi
Voltage rating	335	Veff Maxi
Dielectric withstanding voltage	1000	Veff mini
Insulation resistance	1000	M Ω mini

MECHANICAL CHARACTERISTICS

Center contact retention	
Axial force – Mating end	10 N mini
Axial force – Opposite end	10 N mini
Torque	NA N.cm mini

Recommended torque	
Mating	NA N.cm
Panel nut	NA N.cm
Clamp nut	70 N.cm
A/F clamp nut	5.000 mm

Mating life	500 Cycles mini
Weight	3.300 g

ENVIRONMENTAL

Operating temperature	-65/+165 °C
Hermetic seal	NA Atm.cm3/s
Panel leakage	NA

SPECIFICATION**CABLE ASSEMBLY**

Stripping	a	b	c	d	e	f
mm	2.20	5.40	15.5	0.00	13.3	0.00

Assembly instruction :

Recommended cable(s)

KX 22A

RG 188

RG 179

RG 187

RG 316

Cable retention

- pull off

110 N mini

- torque

3.2 N.cm**TOOLING**

Part Number	Description	Hexagon
.	.	.
R282.211.000	CRIMPING TOOL	3.25
R282.235.003	CRIMPING DIES	3.25
R282.293.000	CRIMPING TOOL	-

OTHERS CHARACTERISTICS

-

Issue : **01-02-22 C**

In the effort to improve our products, we reserve the right to make changes judged to be necessary.

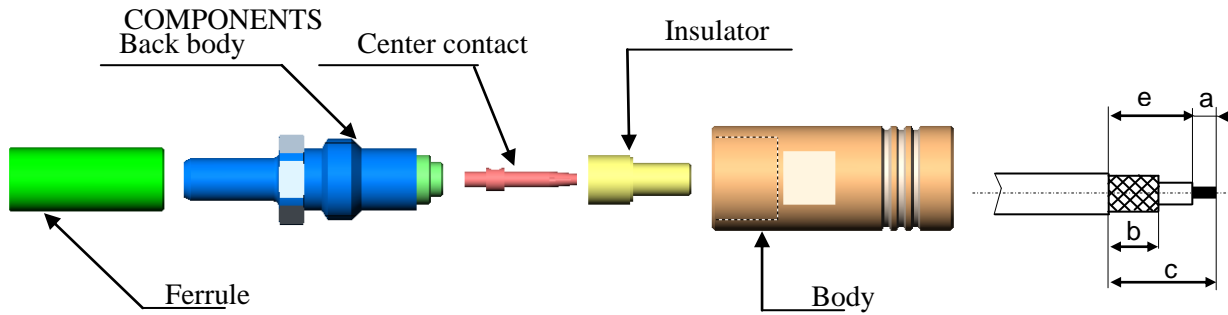
**RADIALL®**

STRAIGHT PLUG CRIMP TYPE

CABLE 2.6/50+75 S

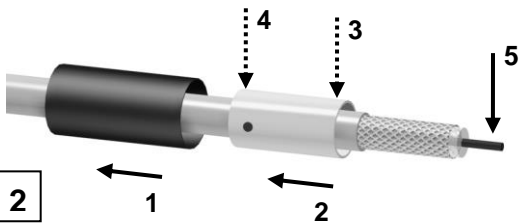
R114.075.000

Series : SMB



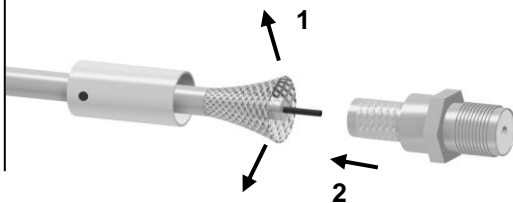
1

Slide the heatshrink onto the cable (in option).
Slide the ferrule onto the cable.
If solder : the hole in front.
If crimping : the hole in back.
Strip the cable.



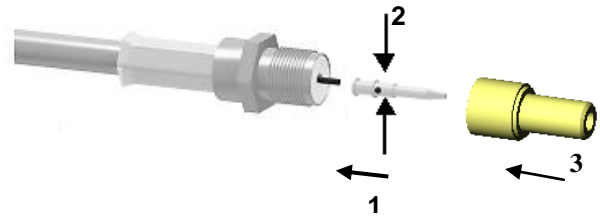
2

Fan the braid.
Mount the cable in the back body.



4

Mount the center contact inner conductor.
Solder or crimping the contact with crimping tool
(see connector TDS).
Mount the front insulator.



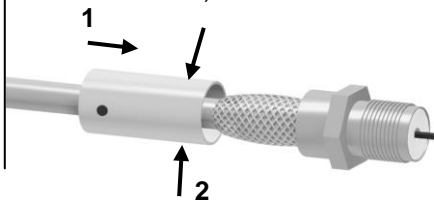
5

Mount the sub-assembly into the connector and
screw the body
Recommended coupling torque : 70N cm.



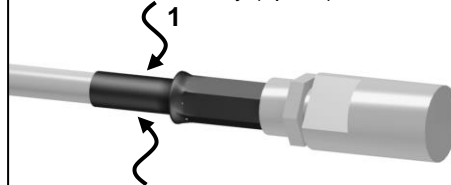
3

Slide ferrule over the braid.
Crimp the ferrule with crimping tool (see
connecteur TDS).



6

Place and shrink the heatshrink between 135° to
250° at back to body (option).



Issue : 01-02-22 C

In the effort to improve our products, we reserve the right to make changes judged to be necessary.



RADIALL®