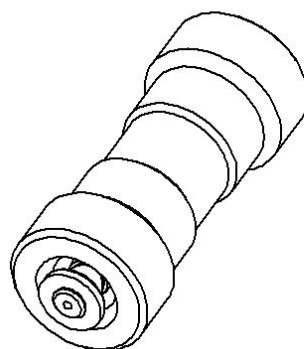
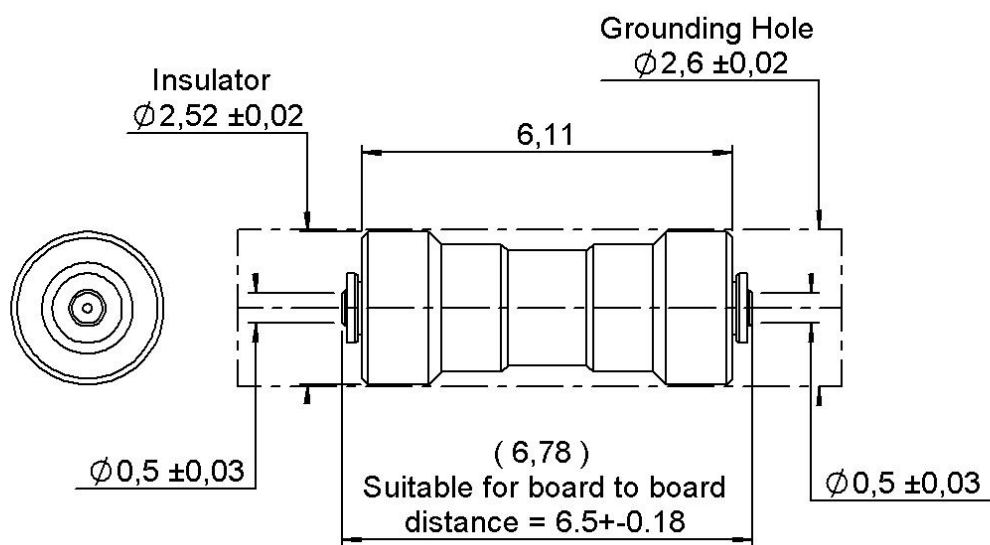


PAGE 1/3

ISSUE  
08-03-23

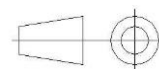
SERIES **IMP SR**

PART NUMBER **R107825060**



  
scale 1/1

All dimensions are in mm. Tolerances according ISO 2768 m-H



COMPONENTS	MATERIALS	PLATING ( $\mu\text{m}$ )
Body	<b>BERYLLIUM COPPER</b>	<b>NPGR</b>
Center contact		
Outer contact		
Insulator	<b>PTFE</b>	-
Gasket	-	-
Others parts	-	-
-	-	-
-	-	-

PAGE 2/3	ISSUE 08-03-23	SERIES IMP SR	PART NUMBER R107825060
----------	-------------------	---------------	------------------------

## PACKAGING

Standard	Unit	Other
100	Contact us	Contact us

## ELECTRICAL CHARACTERISTICS

Impedance	50	$\Omega$
Frequency	0-70	GHz
VSWR	1.3 * + 0,000	x F(GHz) Maxi
Insertion loss	TBD	$\sqrt{F}$ (GHz) dB Maxi
RF leakage	- (	- F(GHz)) dB Maxi
Voltage rating	225	Veff Maxi
Dielectric withstanding voltage	500	Veff mini
Insulation resistance	1000	M $\Omega$ mini

## MECHANICAL CHARACTERISTICS

Center contact retention		
Axial force – Mating End	0.5	N mini
Axial force – Opposite end	0.5	N mini
Torque		N.cm mini

Recommended torque	
Mating	N.cm
Panel nut	N.cm

Mating life	50	Cycles mini
Nominal Weight	0,180	g
(Add +15% for max weight)		

## ENVIRONMENTAL

Operating temperature	-55/+165	°C
Hermetic seal		Atm.cm3/s
Panel leakage		

## SPECIFICATION

## OTHER CHARACTERISTICS

Assembly instruction:

Others:

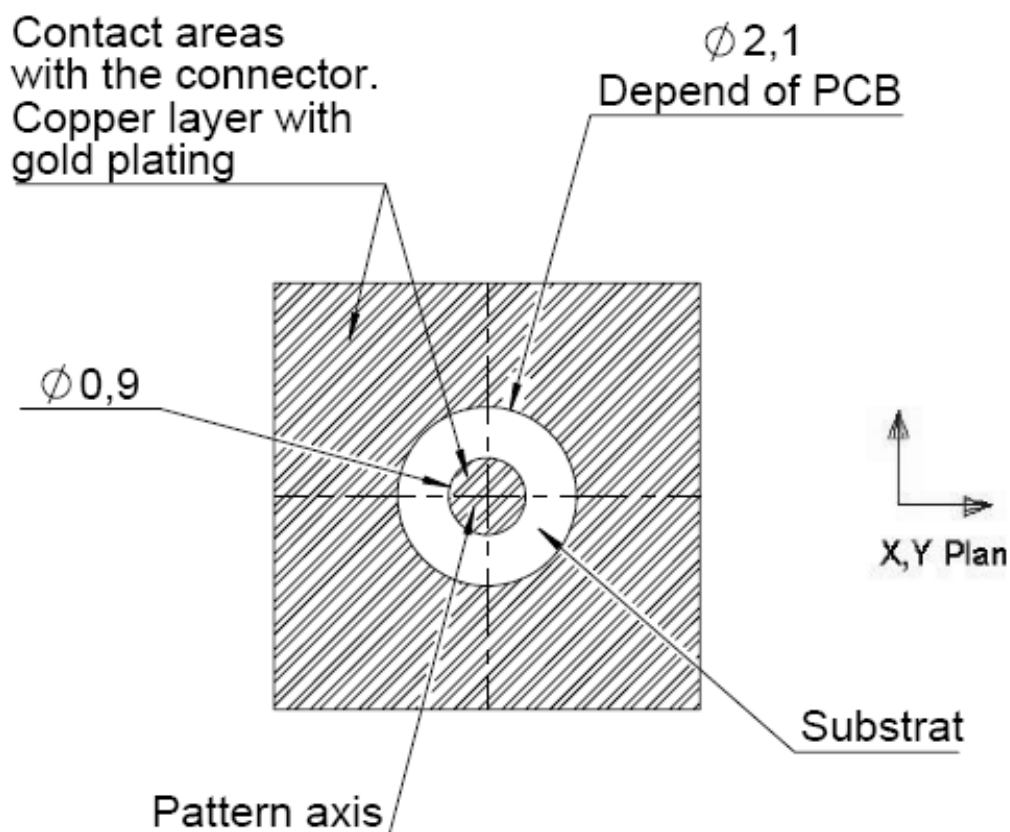
\*Depend of PCB-Coaxial Line Only

\*1.4 : DC->40Ghz - 1.7:40->70Ghz

CUSTOMER'S APPROVAL
Department or Company's stamp
Name : Date :
Copy to send back to RADIAL S.A BEFORE :

## PCB Layouts

Dimension are given for information



**The misalignment between the connector axis and the PCB  
can't exceed a coaxiality default of 0.25 mm (X,Y plan)**