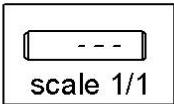
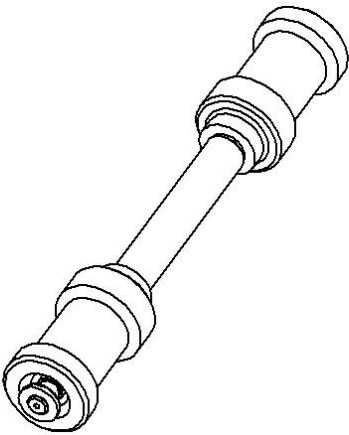
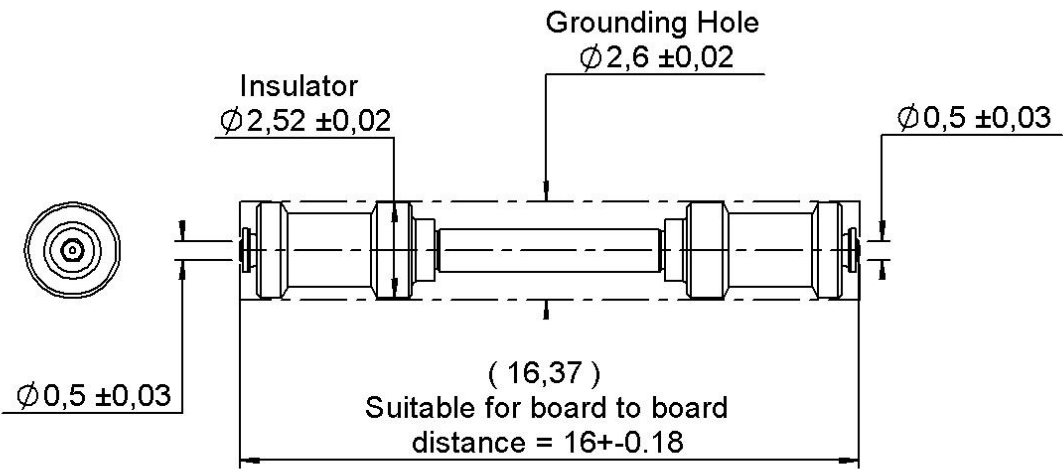
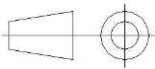


PAGE 1/3	ISSUE 06-03-23A	SERIES IMP SR	PART NUMBER R107825040
----------	--------------------	---------------	------------------------



All dimensions are in mm. Tolerances according ISO 2768 m-H



COMPONENTS	MATERIALS	PLATING (µm)
Body	BERYLLIUM COPPER	NPGR
Center contact		
Outer contact		
Insulator	PTFE	
Gasket		
Others parts		
-	-	-
-	-	-

PAGE 2/3

ISSUE
06-03-23A

SERIES IMP SR

PART NUMBER R107825040

PACKAGING

Standard	Unit	Other
100	Contact us	Contact us

ELECTRICAL CHARACTERISTICS

Impedance	50	Ω
Frequency	0-70	GHz
VSWR	* + 0,000	x F(GHz) Maxi
Insertion loss	TBD	\sqrt{F} (GHz) dB Maxi
RF leakage	- (NA	- F(GHz)) dB Maxi
Voltage rating	225	Veff Maxi
Dielectric withstanding voltage	500	Veff mini
Insulation resistance	1000	M Ω mini

MECHANICAL CHARACTERISTICS

Center contact retention		
Axial force – Mating End	0.5	N mini
Axial force – Opposite end	0.5	N mini
Torque		N.cm mini

Recommended torque	
Mating	N.cm
Panel nut	N.cm

Mating life	50	Cycles mini
Nominal Weight	0,978	g
(Add +15% for max weight)		

ENVIRONMENTAL

Operating temperature	-55/+165	°C
Hermetic seal		Atm.cm3/s
Panel leakage		

SPECIFICATION

OTHER CHARACTERISTICS

Assembly instruction:

Others:

*Depend of PCB-Coaxial Line Only

*1.35 : DC->40Ghz - 1.6:40->70Ghz

CUSTOMER'S APPROVAL	
Department or Company's stamp	
Name :	
Date :	
Copy to send back to RADIAL S.A BEFORE :	

PAGE 3/3

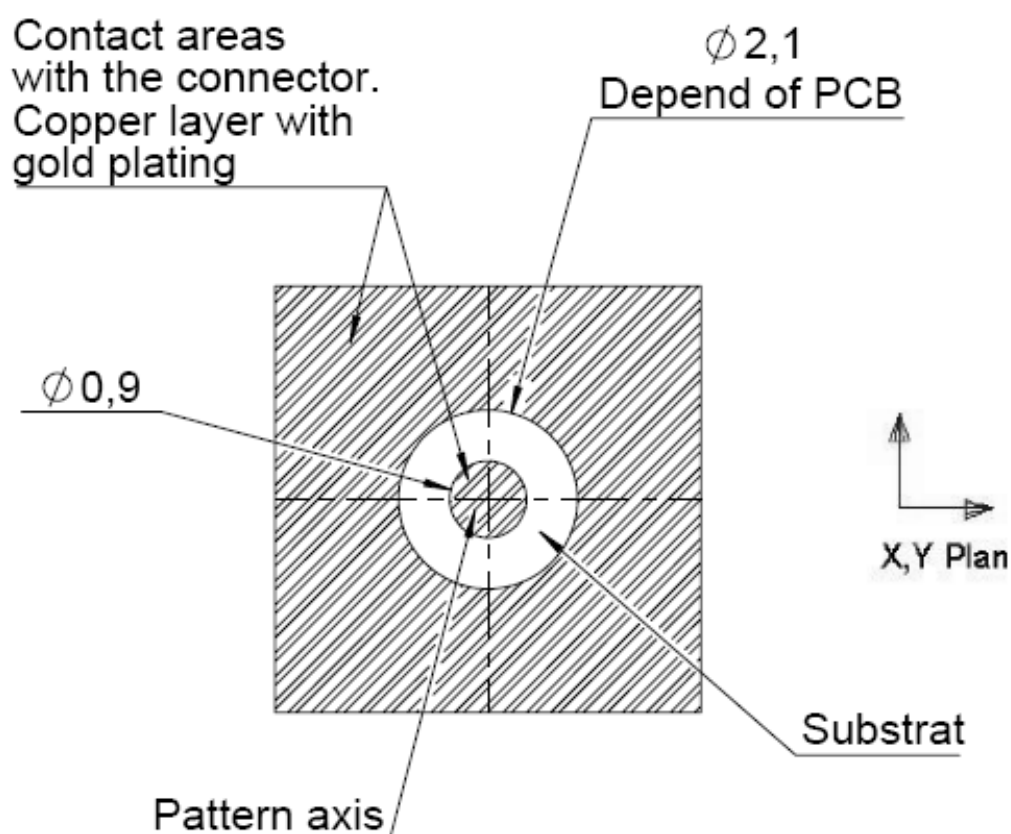
ISSUE
06-03-23A

SERIES IMP SR

PART NUMBER R107825040

PCB Layouts

Dimension are given for information



**The misalignment between the connector axis and the PCB
can't exceed a coaxiality default of 0.25 mm (X,Y plan)**