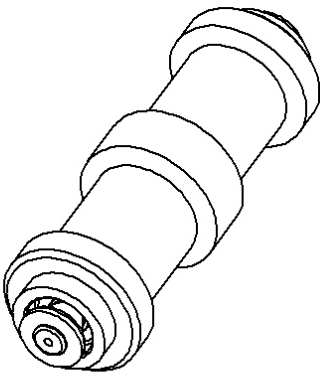
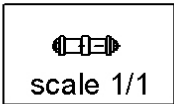
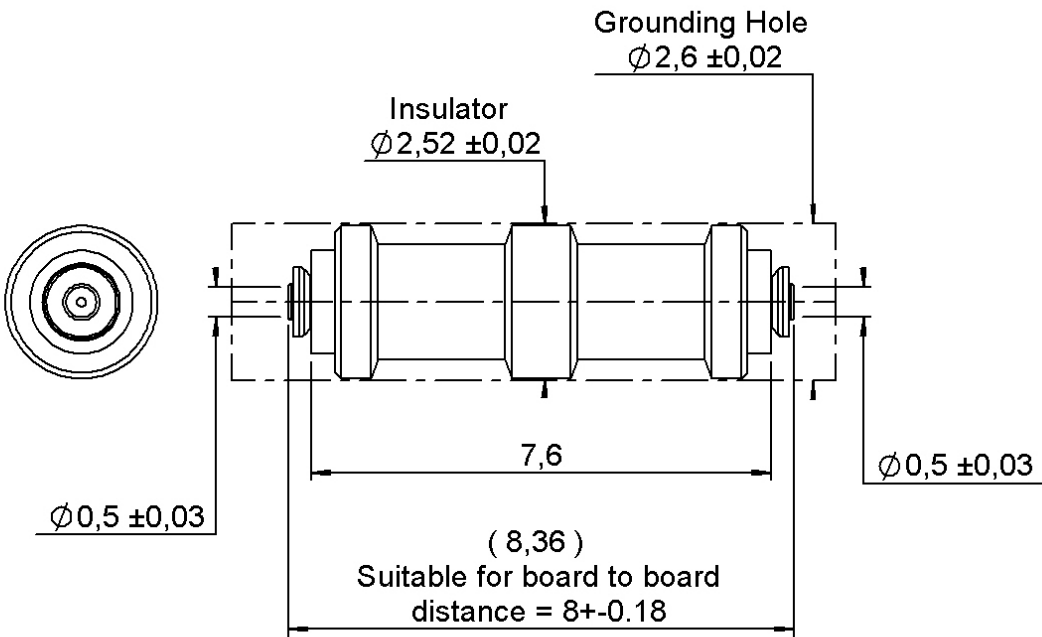
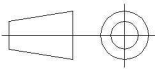


PAGE 1/3	ISSUE 31-07-23B	SERIES IMP SR	PART NUMBER R107825010
----------	--------------------	---------------	------------------------



All dimensions are in mm. Tolerances according ISO 2768 m-H



COMPONENTS	MATERIALS	PLATING (μm)
Body	BERYLLIUM COPPER - BRONZE	NPGR
Center contact		-
Outer contact		-
Insulator	PTFE	-
Gasket	-	-
Others parts	-	-
-	-	-
-	-	-

PAGE 2/3

ISSUE
31-07-23B

SERIES IMP SR

PART NUMBER R107825010

PACKAGING

Standard	Unit	Other
100	Contact us	Contact us

ELECTRICAL CHARACTERISTICS

Impedance	50	Ω
Frequency	0-67	GHz
VSWR	* + 0,000	x F(GHz) Maxi
Insertion loss	0.1**	√F(GHz) dB Maxi
RF leakage	- (- F(GHz)) dB Maxi
Voltage rating	225	Veff Maxi
Dielectric withstanding voltage	500	Veff mini
Insulation resistance	1000	MΩ mini

ENVIRONMENTAL

Operating temperature	-55/+165	°C
Hermetic seal		Atm.cm3/s
Panel leakage		

MECHANICAL CHARACTERISTICS

Center contact retention		
Axial force – Mating End	0.5	N mini
Axial force – Opposite end	0.5	N mini
Torque		N.cm mini

Recommended torque		
Mating		N.cm
Panel nut		N.cm

Mating life	50	Cycles mini
Nominal Weight	0,080	g
(Add +15% for max weight)		

SPECIFICATION

OTHER CHARACTERISTICS

Assembly instruction:

Others:

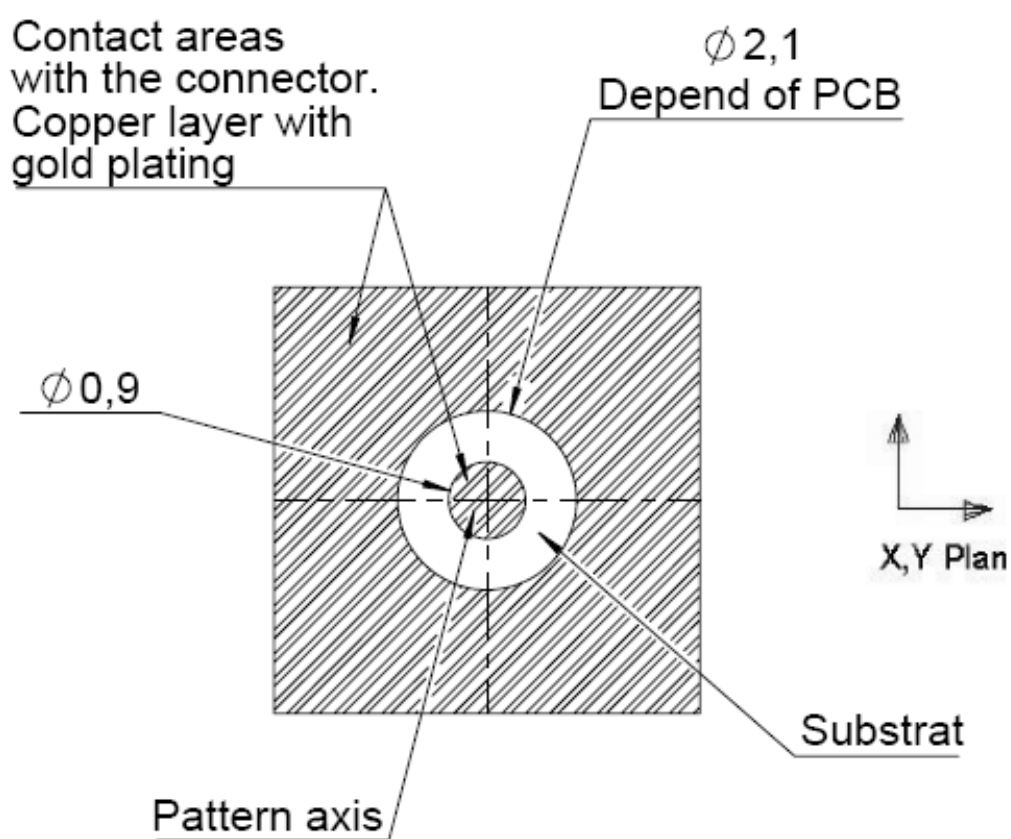
*Depend on PCB-Coax line only

*Typical VSWR=1.3:DC->40Ghz and 1.6:40->67Ghz

** at 20Ghz

PCB Layouts

Dimension are given for information



**The misalignment between the connector axis and the PCB
can't exceed a coaxiality default of 0.25 mm (X,Y plan)**