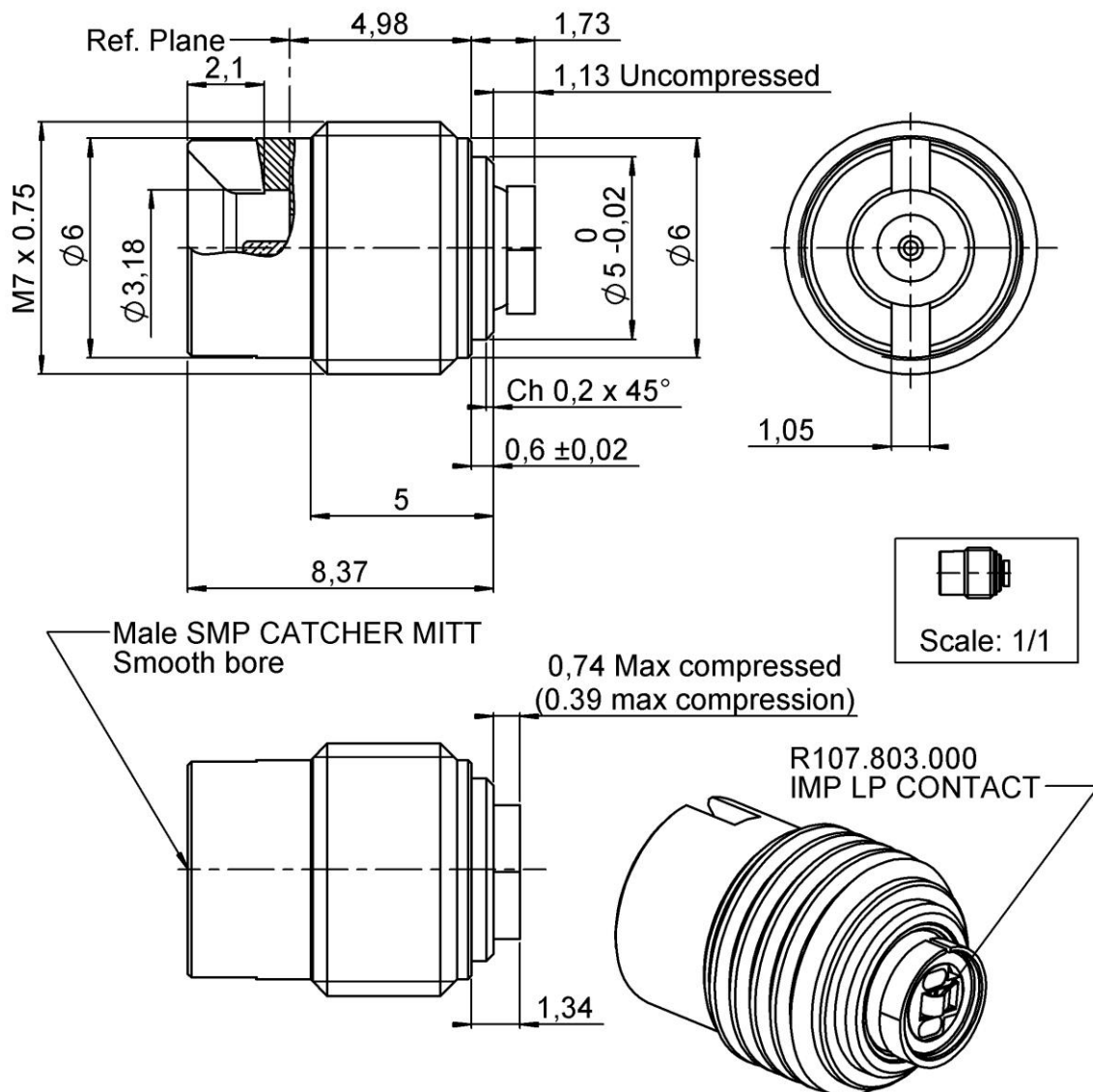


PAGE 1/5

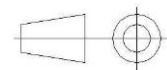
ISSUE  
18-08-21A

SERIES **IMP**

PART NUMBER **R107820310**



All dimensions are in mm. Tolerances according ISO 2768 m-H



COMPONENTS	MATERIALS	PLATING (µm)
Body	<b>STAINLESS STEEL</b>	<b>PASSIVATED</b>
Center contact	<b>BERYLLIUM COPPER</b>	<b>GOLD OVER NICKEL</b>
Outer contact		
Insulator	<b>PTFE+PEEK</b>	
Gasket		
Others parts	<b>BERYLLIUM COPPER,BRASS</b>	<b>GOLD OVER NICKEL</b>
-	-	-
-	-	-

PAGE 2/5

ISSUE  
**18-08-21A**

SERIES **IMP**

PART NUMBER **R107820310**

### PACKAGING

Standard	Unit	Other
<b>1</b>	<b>Contact us</b>	<b>Contact us</b>

### ELECTRICAL CHARACTERISTICS

Impedance	<b>50</b>	$\Omega$
Frequency	<b>0-18</b>	GHz
VSWR	<b>0,00</b>	x F(GHz) Maxi
Insertion loss	<b>**</b>	$\sqrt{F}$ (GHz) dB Maxi
RF leakage	<b>NA</b>	- F(GHz) dB Maxi
Voltage rating	<b>225</b>	Veff Maxi
Dielectric withstanding voltage	<b>500</b>	Veff mini
Insulation resistance	<b>1000</b>	M $\Omega$ mini

### ENVIRONMENTAL

Operating temperature	<b>-55/+125</b>	°C
Hermetic seal	<b>NA</b>	Atm.cm3/s
Panel leakage	<b>NA</b>	

### MECHANICAL CHARACTERISTICS

Center contact retention		
Axial force – Mating End	<b>***</b>	N mini
Axial force – Opposite end	<b>***</b>	N mini
Torque	<b>NA</b>	N.cm mini

Recommended torque		
Mating	<b>NA</b>	N.cm
Panel nut	<b>90</b>	N.cm

Mating life	<b>50</b>	Cycles mini
Nominal Weight	<b>1,72</b>	g
(Add +15% for max weight)		

### SPECIFICATION

### OTHER CHARACTERISTICS

Assembly instruction:

Others:

**\*VSWR: 1.10 typic DC-12GHz; VSWR: 1.35 typic 12-->18GHz**

**\*\*0.35dB max at 18GHz**

**\*\*\*0.5N min for IMP LP\*\*\*6.7N min for SMP**

**\*\*\*\*50 cycles min for IMP LP**

**\*\*\*\*1000 cycles min for SMP**

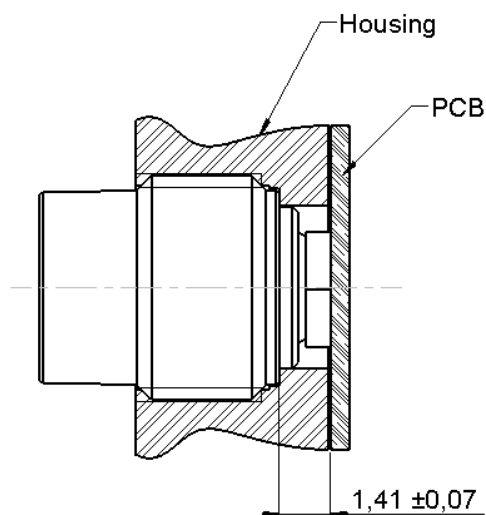
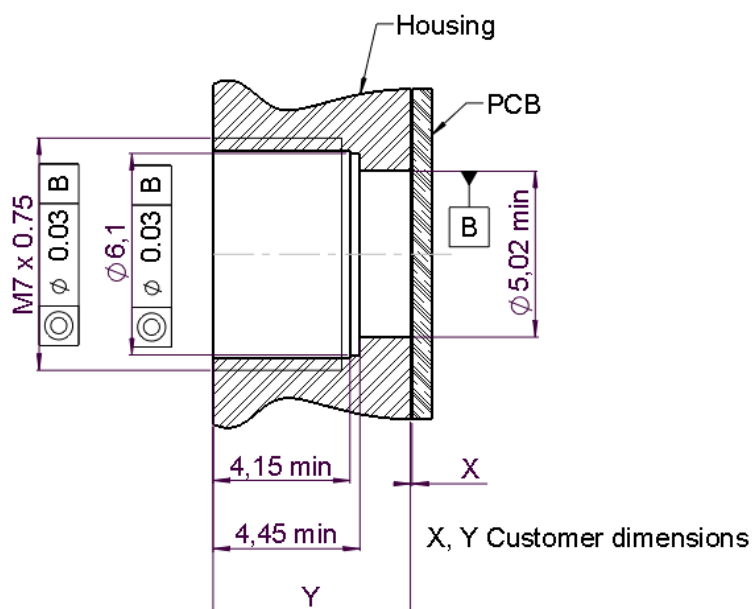
PAGE 3/5

ISSUE  
18-08-21A

SERIES **IMP**

PART NUMBER **R107820310**

**ADDITIONAL INFORMATION**  
**MOUNTING AND REPLACEMENT INSTRUCTIONS**



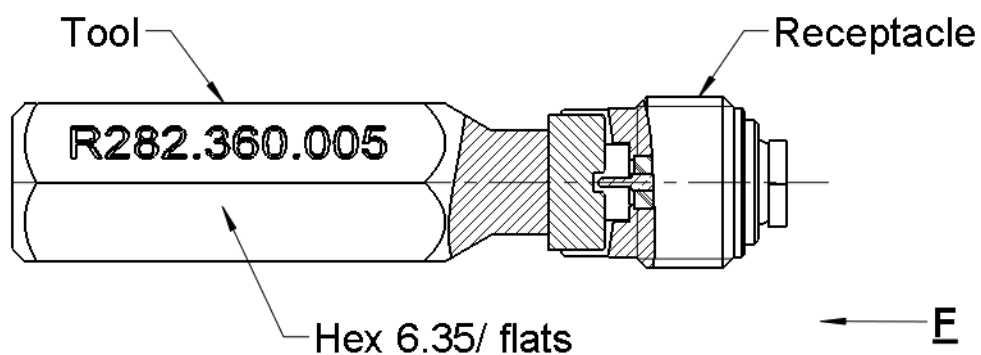
PAGE 4/5

ISSUE  
**18-08-21A**

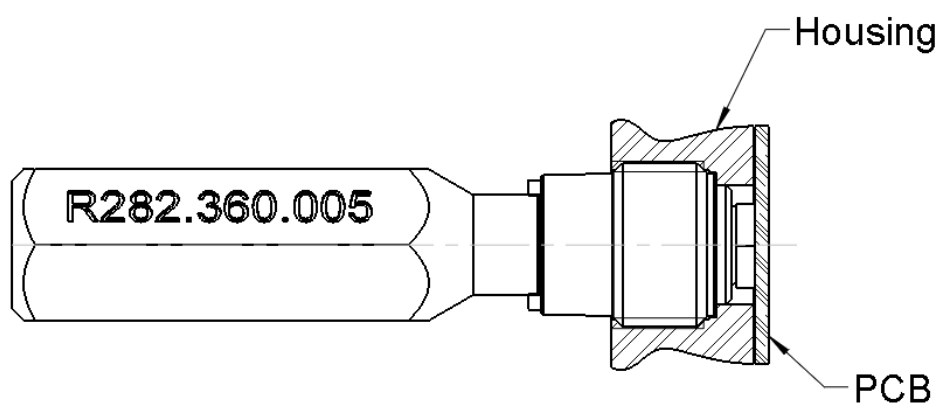
SERIES **IMP**

PART NUMBER **R107820310**

- 1) Connector must be screwed or unscrewed with adapted torque  
Tool without the torque driver: R282.360.005. (recommended coupling torque : 90 N.cm)
- 2) Slide on the connector in F direction until it stops against the tool.



- 3) Screw the whole into the housing until activation of the torque driver.



PAGE 5/5

ISSUE  
18-08-21A

SERIES **IMP**

PART NUMBER **R107820310**

## PAD recommended

