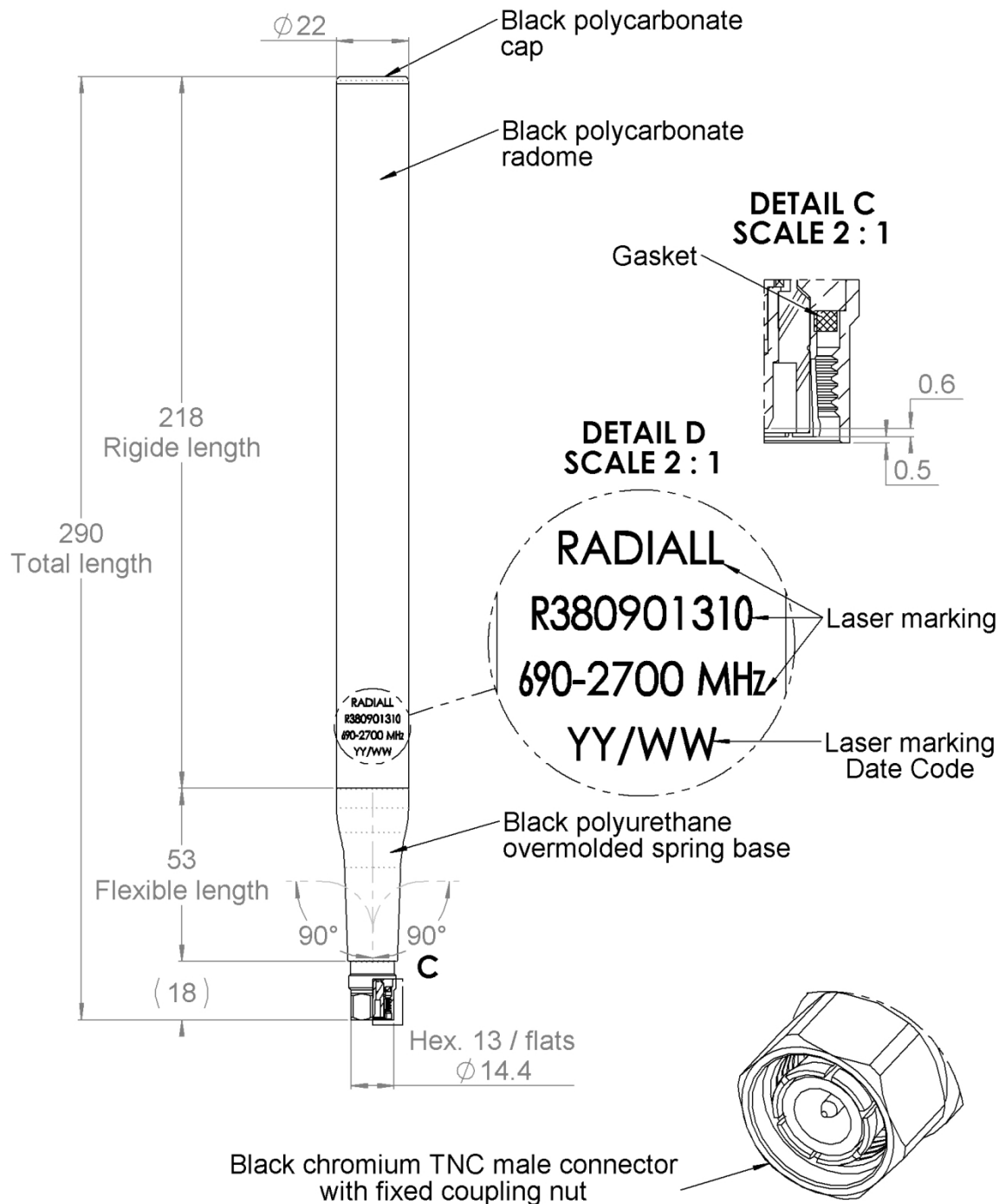


PAGE 1/2	ISSUE 21-05-25A	SERIES ANTENNA	PART NUMBER R380901310
----------	--------------------	-------------------	-------------------------------

SCALE 1 : 2



SCALE 2 : 1

All dimensions are in mm. Tolerances according ISO 2768 m-H

PAGE 2/2	ISSUE 21-05-25A	SERIES ANTENNA	PART NUMBER R380901310
----------	---------------------------	--------------------------	-------------------------------

ELECTRICAL CHARACTERISTICS

Frequency :	690-2700	MHz
Nominal Impedance :	50	Ω
VSWR :	3.0:1	Typ.
Gain	0.5	dBi typ.
Radiation Pattern	Omni-directional See patterns	
Horizontal Plane :		
Vertical Plane :	LINEAR VERTICAL	
Polarization :		
Power rating :	20	W CW
Connector type :	TNC plug (Male)	Fixed coupling nut

MECHANICAL CHARACTERISTICS

Antenna Color :	BLACK MATTE
Antenna Radome Material :	PC
TNC connector tightening torque for locking:	3.4 N.m max
Weight :	120 g max
Overall length :	290 mm
Antenna Diameter :	22 mm
Antenna flexibility *:	+/- 90°

ENVIRONMENTAL CHARACTERISTICS

Operating temperature :	-40/+71 ° C
Storage temperature :	-55/+85 ° C
Immersion (mated to radio)	1m, for 1h
Transit drops	26 drops / 1Kg
MIL-STD-810H Compliant	

* With good damping thanks to the elastomer overmolding.