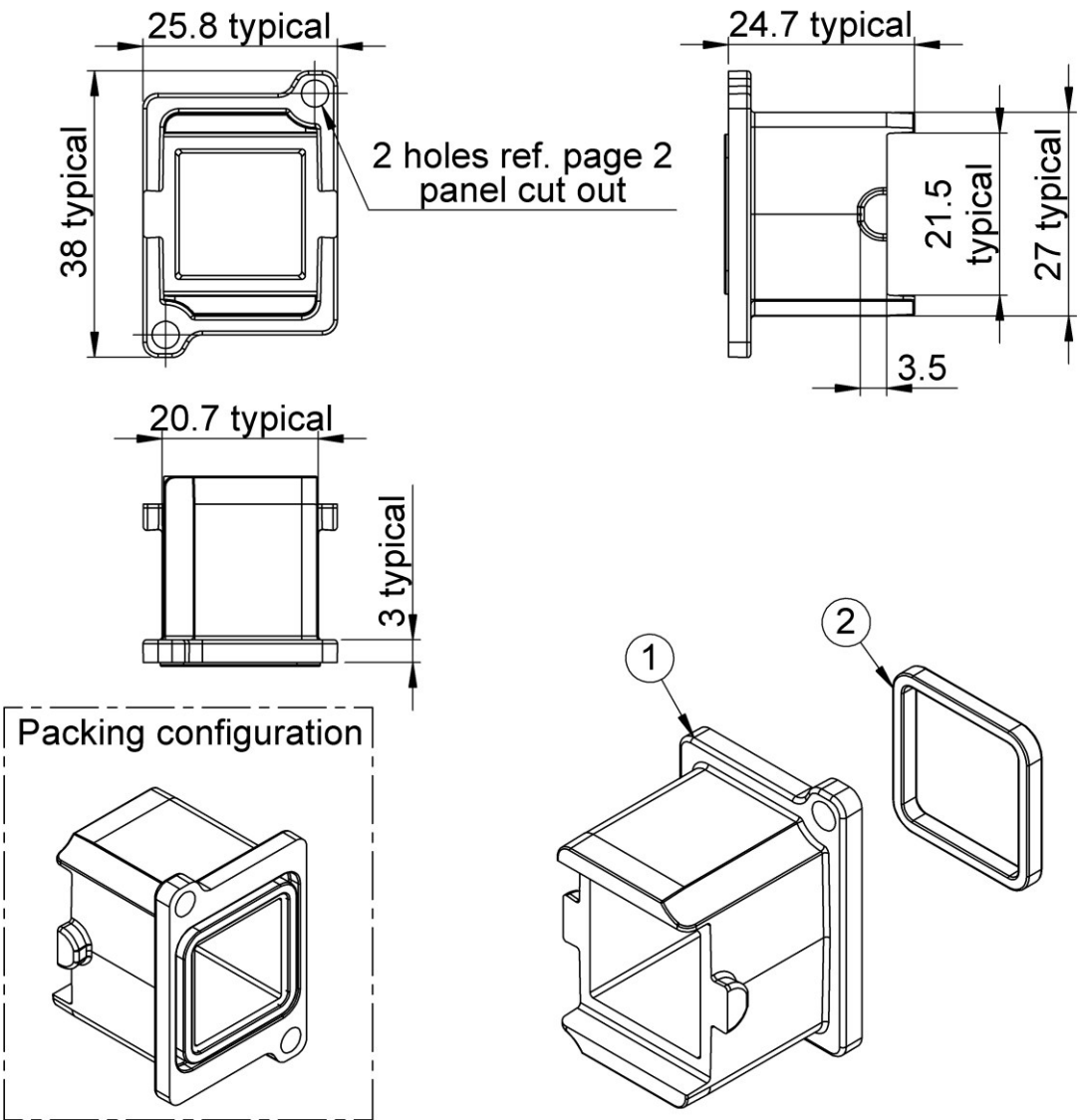


|           |                 |              |                        |
|-----------|-----------------|--------------|------------------------|
| PAGE 1/10 | ISSUE 21-02-25A | SERIES OCTIS | PART NUMBER OCTI907505 |
|-----------|-----------------|--------------|------------------------|



All dimensions are in mm.

DESCRIPTION

| REP | COMPONENT                 | MATERIALS      | PLATING     |
|-----|---------------------------|----------------|-------------|
| 1   | Screwable Receptacle Body | ALUMINUM ALLOY | PASSIVATION |
| 2   | Panel Sealing Gasket      | SILICONE       | -           |

PAGE 2/10

ISSUE 21-02-25A

SERIES OCTIS

PART NUMBER OCTI907505

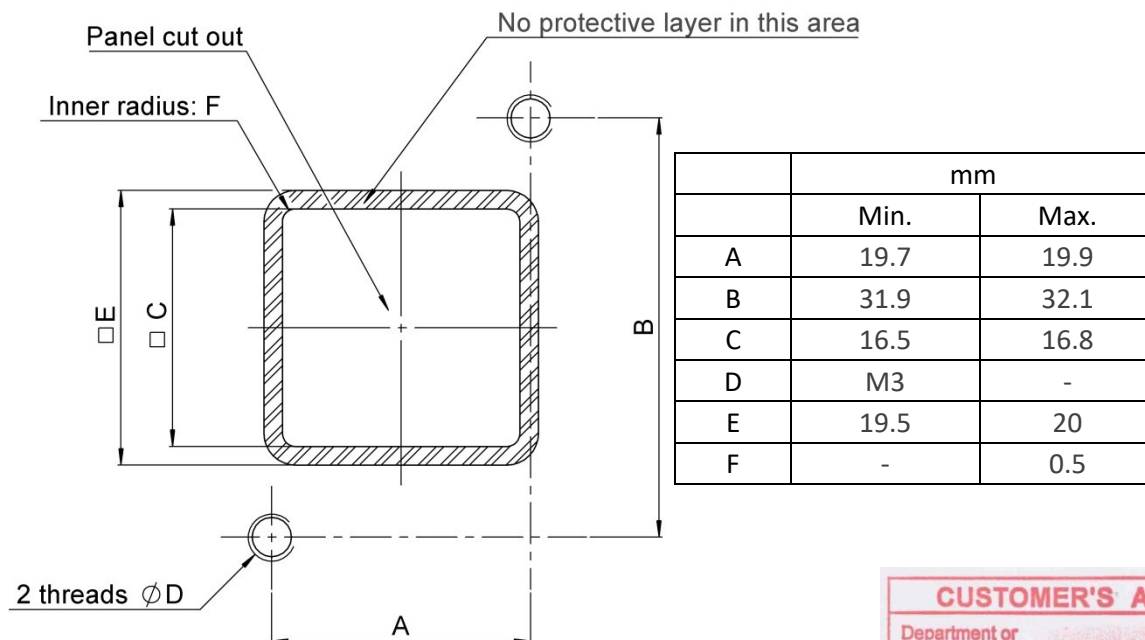
### GENERAL CHARACTERISTICS

|                                                                                                                                                                               |                                                                                           |                                                                                               |
|-------------------------------------------------------------------------------------------------------------------------------------------------------------------------------|-------------------------------------------------------------------------------------------|-----------------------------------------------------------------------------------------------|
| <b>Mechanical</b><br>Mating endurance (cycles)<br>Vibration<br>Weight (g)                                                                                                     | -<br>IEC 60068-2-6<br>-                                                                   | 100<br>10-150-10 Hz<br>17.68                                                                  |
| <b>Environmental</b><br>Protection class<br>Operating temperature (°C)<br>Storage temperature (°C)<br>Humidity (damp heat)<br>Salt Mist<br>RoHS<br>Flammability<br>UVB Resist | IEC 60529<br>-<br>-<br>IEC 60068-2-3<br>IEC 61300-2-26<br>-<br>UL 94<br>ASTM G154 cycle 2 | IP67 *<br>-40 / +85<br>-65 / +85<br>95%RH for 21 days<br>720h **<br>Compliant<br>V0<br>1000 h |
| <b>Others:</b><br>Equipment interface<br>Packaging                                                                                                                            | -<br>-                                                                                    | For use with OCTIS™ plug or receptacle cap<br>Trays in card board box<br>24 pcs by tray       |

\* When mated with corresponding Radiall OCTIS plug

\*\* No functional defects after NSS test.

### PANEL CUT OUT



### CUSTOMER'S APPROVAL

Department or  
company's stamp

Name :

Date :

Copy to send back to  
RADIALL S.A. BEFORE :

PAGE 3/10

ISSUE **21-02-25A**

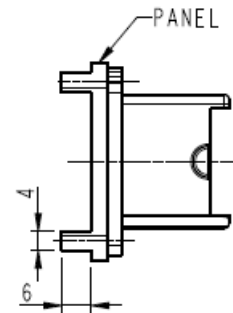
SERIES **OCTIS**

PART NUMBER **OCTI907505**

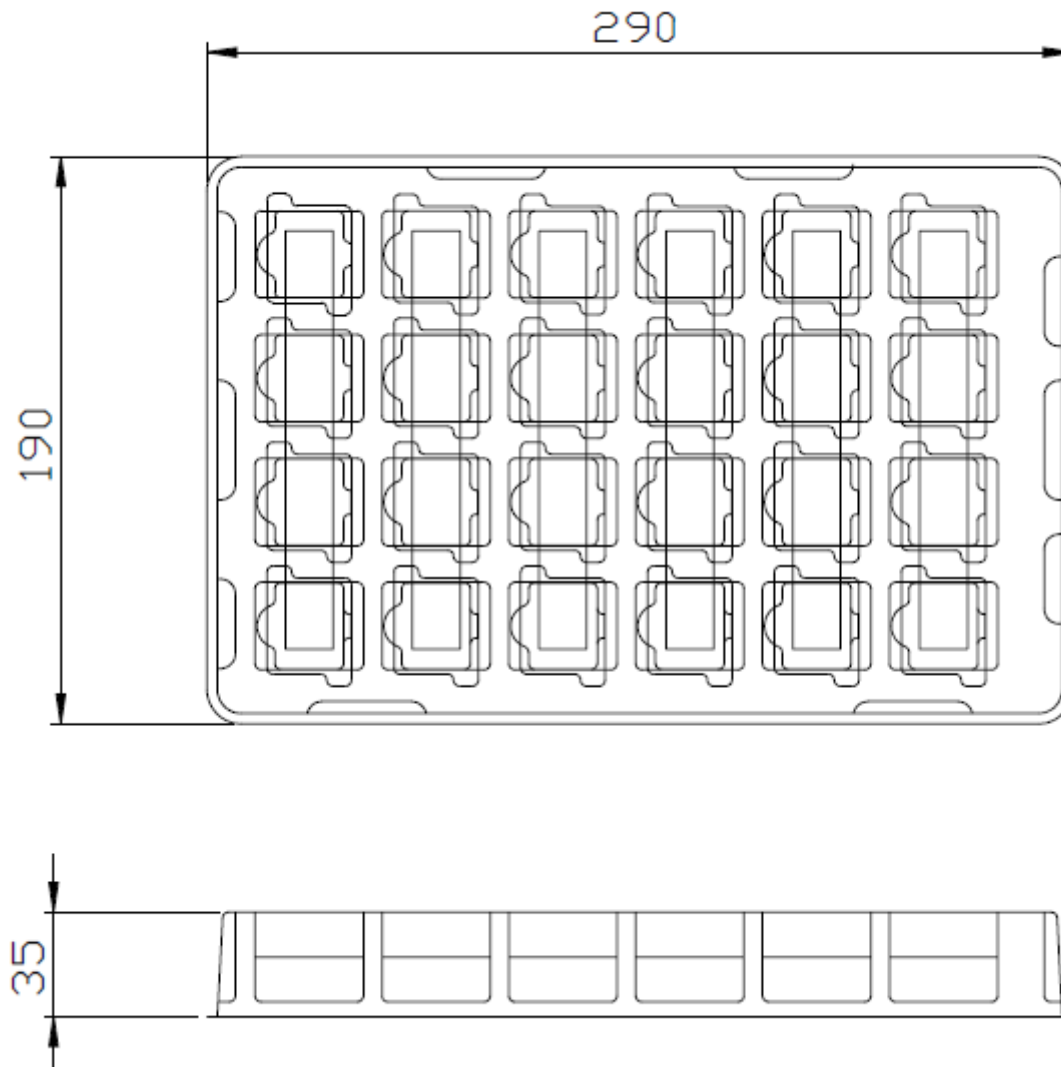
**VIEW OF BULKHEAD FIXED ON PANEL**

IF A SCREW TYPE BULKHEAD IS USED, THEN THE CASTED MOUNTING PANEL SHOULD HAVE ON ITS REAR SIDE AN INTEGRAL RECTANGULAR REINFORCED RIBS OF 6MM THICKNESS AND 4MM WIDTH ALONG THE MOUNTING SCREW PLANE AT THE TOP AND BOTTOM TO ACCOMMODATE THE BLIND INTERNAL SCREW THREAD IT IS NOT APPLICABLE FOR INTEGRATED BULKHEAD CASTED WITH MOUNTING PANEL.

IF THE BULKHEAD IS SCREW TYPE THEN THE SCREWS TO BE USED ARE M3 RECOMMENDED SCREW-M3x8MM AND THE MATERIAL IS STAINLESS STEEL.



**PACKAGING:**



PAGE 4/10

ISSUE 21-02-25A

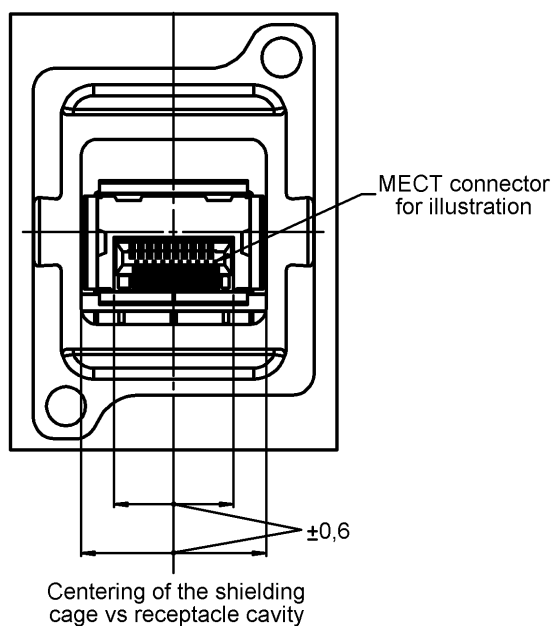
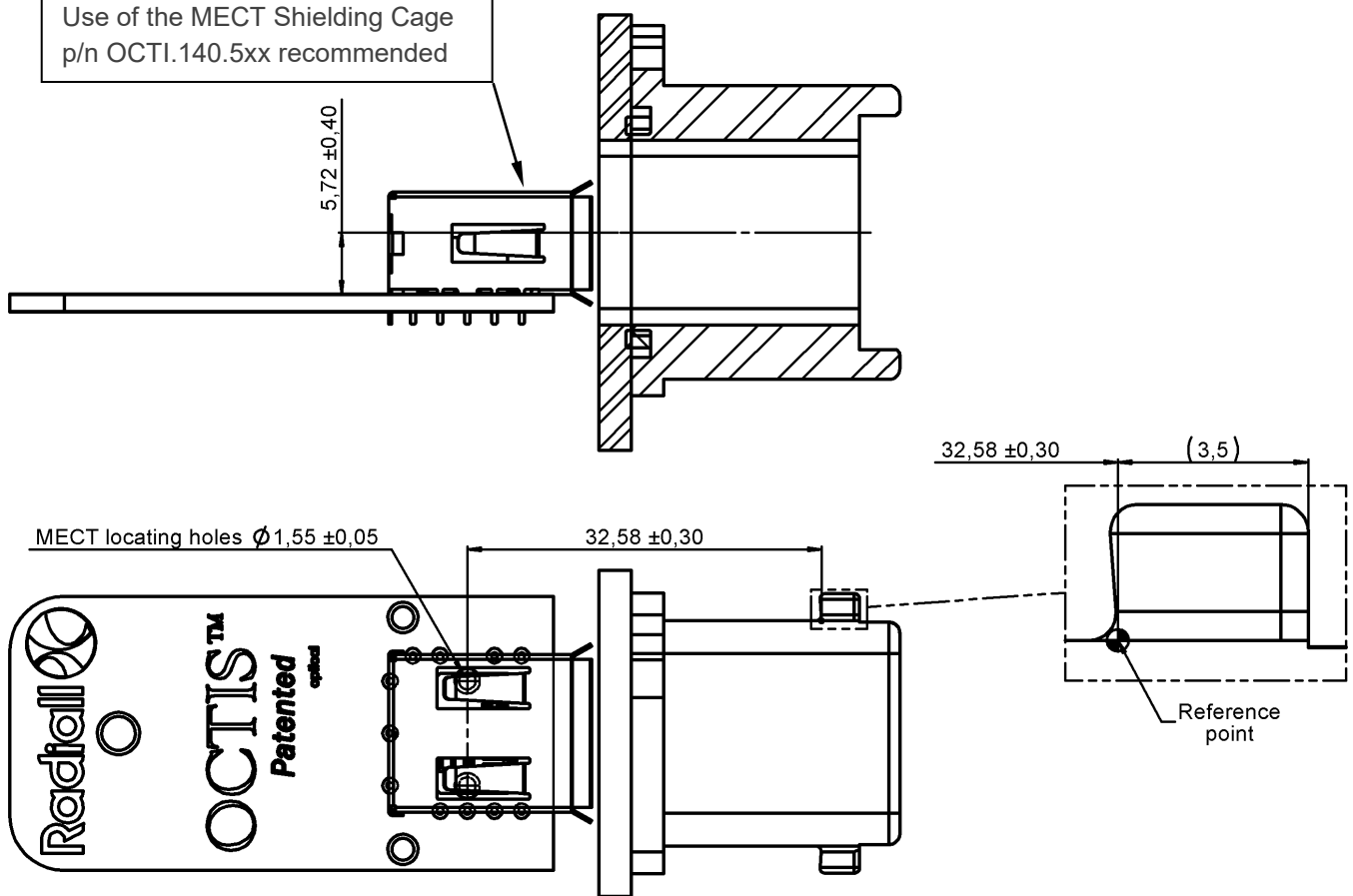
SERIES OCTIS

PART NUMBER OCTI907505

**POSITIONNING AND PATTERN DEFINITION**

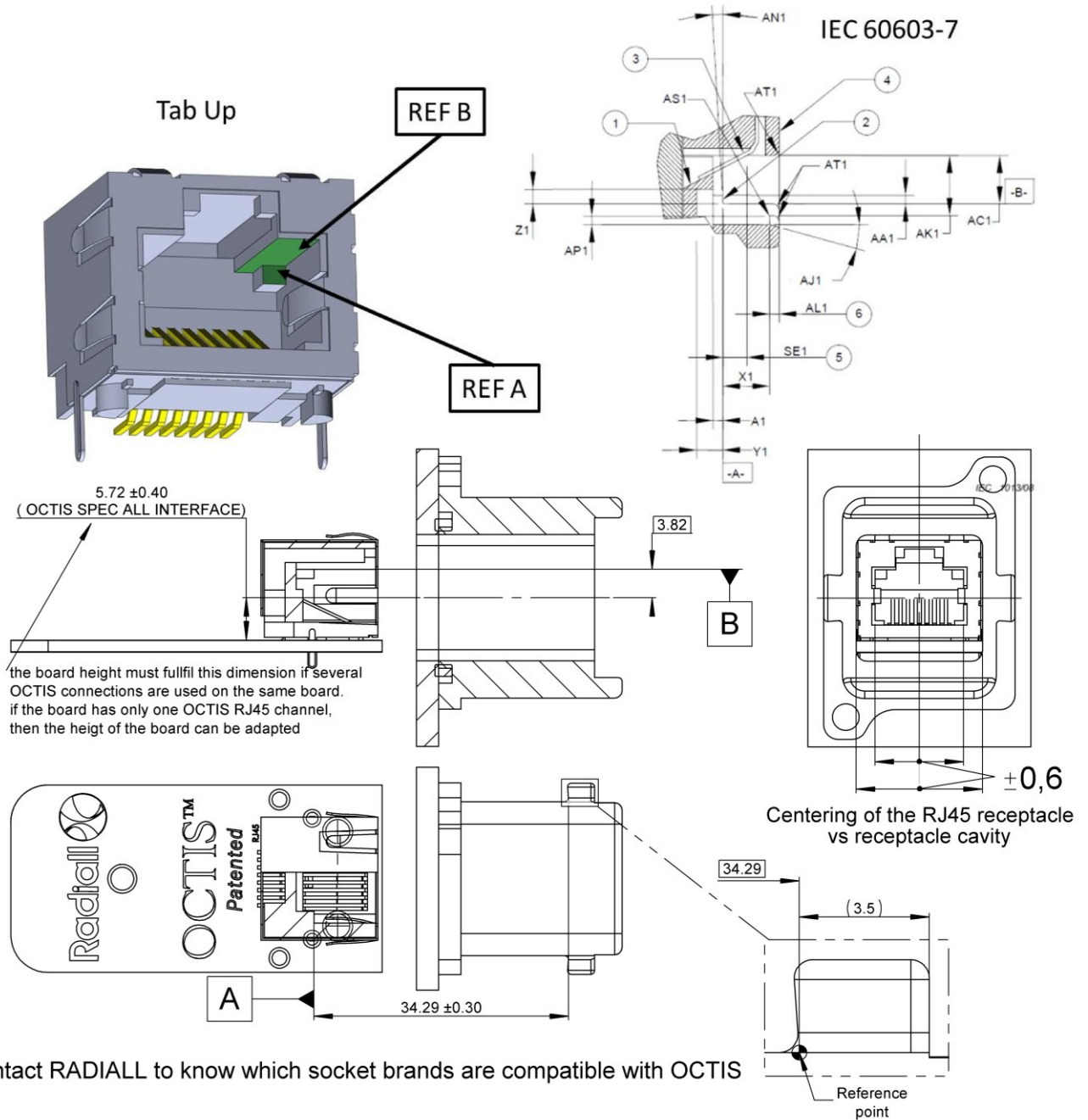
**OCTIS SFP Version**

Use of the MECT Shielding Cage  
p/n OCTI.140.5xx recommended



only for positioning illustration

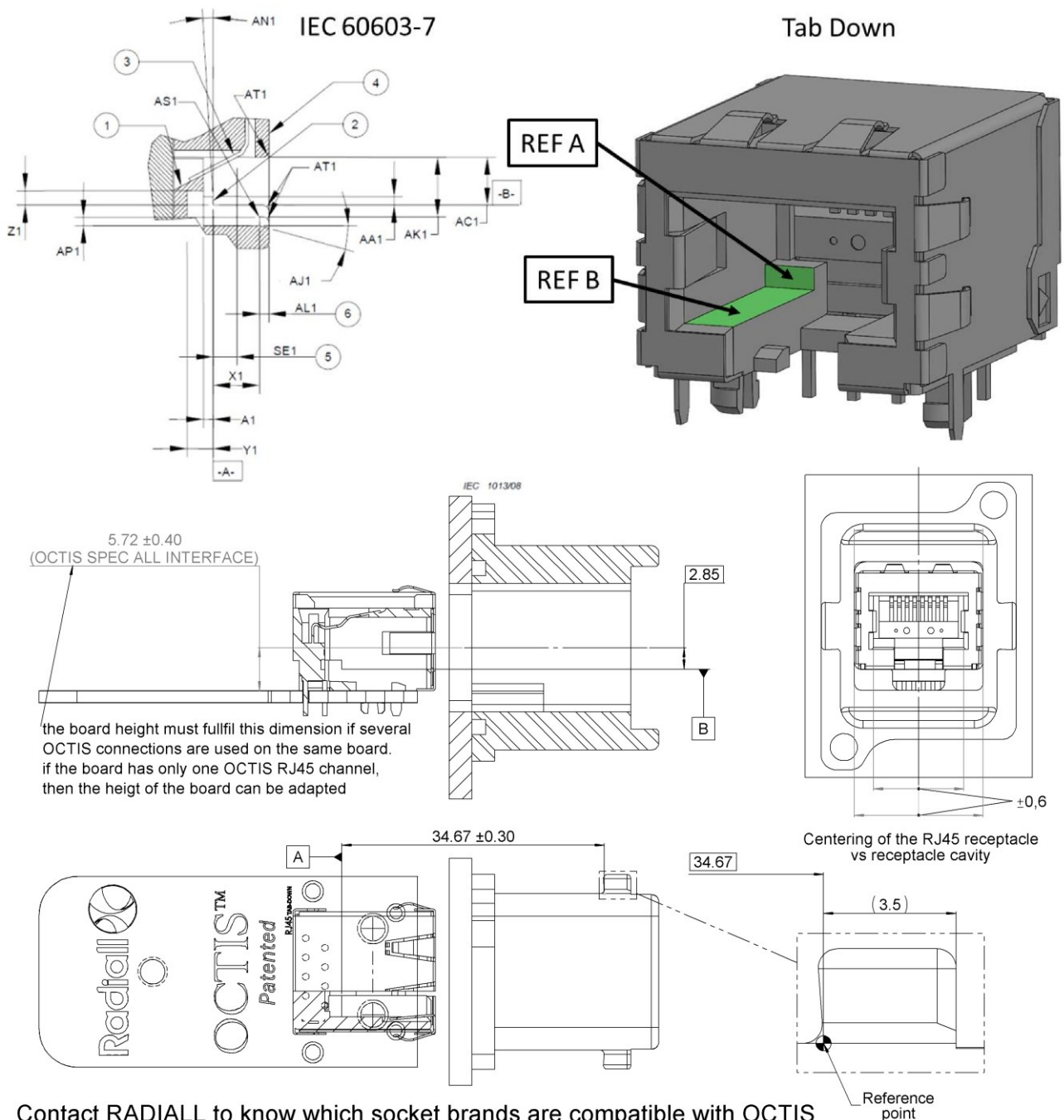
OCTIS Left and Right RJ45 Version



Contact RADIALL to know which socket brands are compatible with OCTIS

only for positioning illustration

OCTIS Tab Down RJ45 Version



Contact RADIALL to know which socket brands are compatible with OCTIS

only for positioning illustration

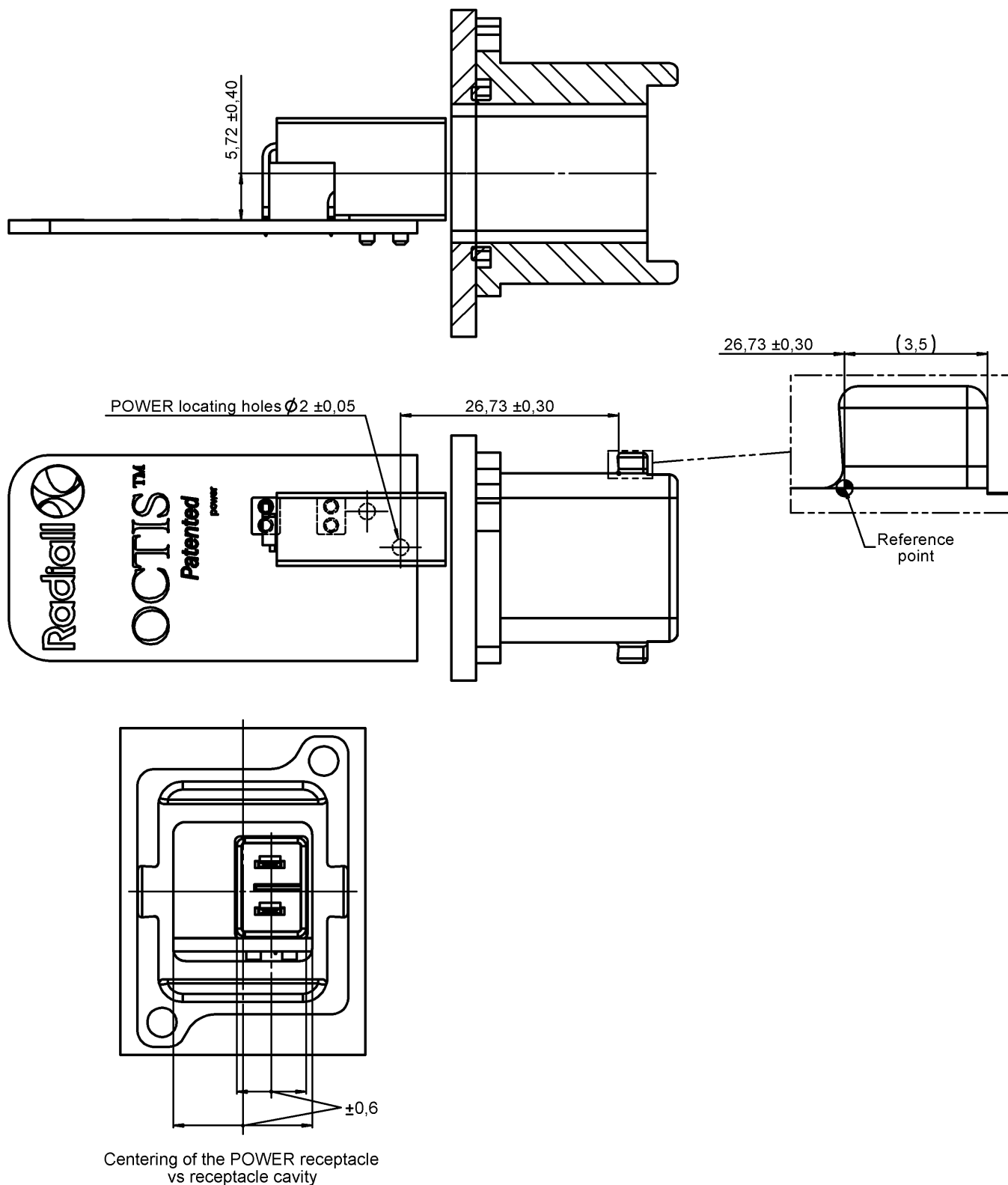
PAGE 7/10

ISSUE 21-02-25A

SERIES OCTIS

PART NUMBER OCTI907505

OCTIS 2 Contacts Power Version



only for positioning illustration

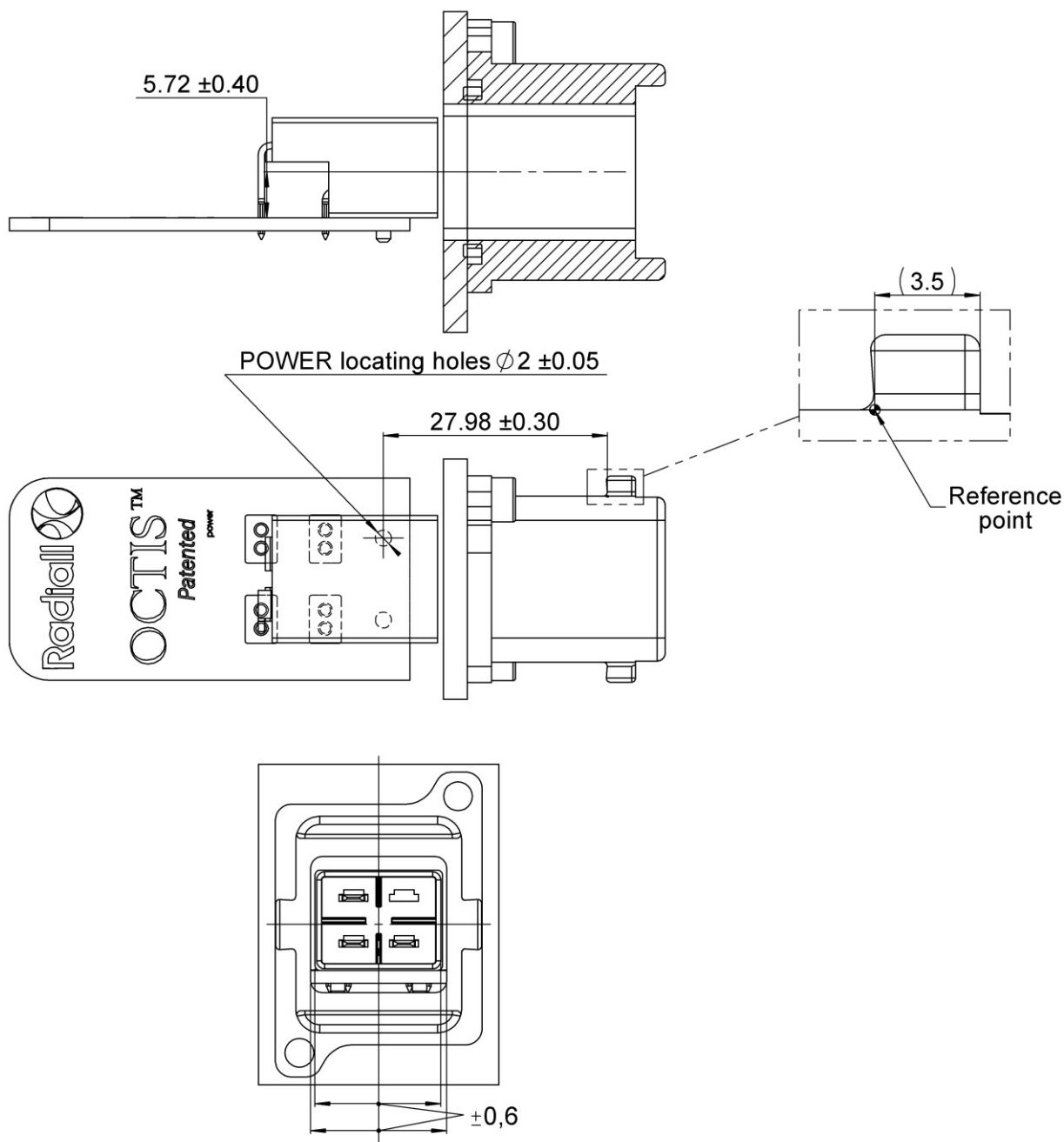
PAGE 8/10

ISSUE 21-02-25A

SERIES OCTIS

PART NUMBER OCTI907505

OCTIS 3/4 contacts Power Version



Centering of the POWER receptacle  
vs receptacle cavity

only for positioning illustration



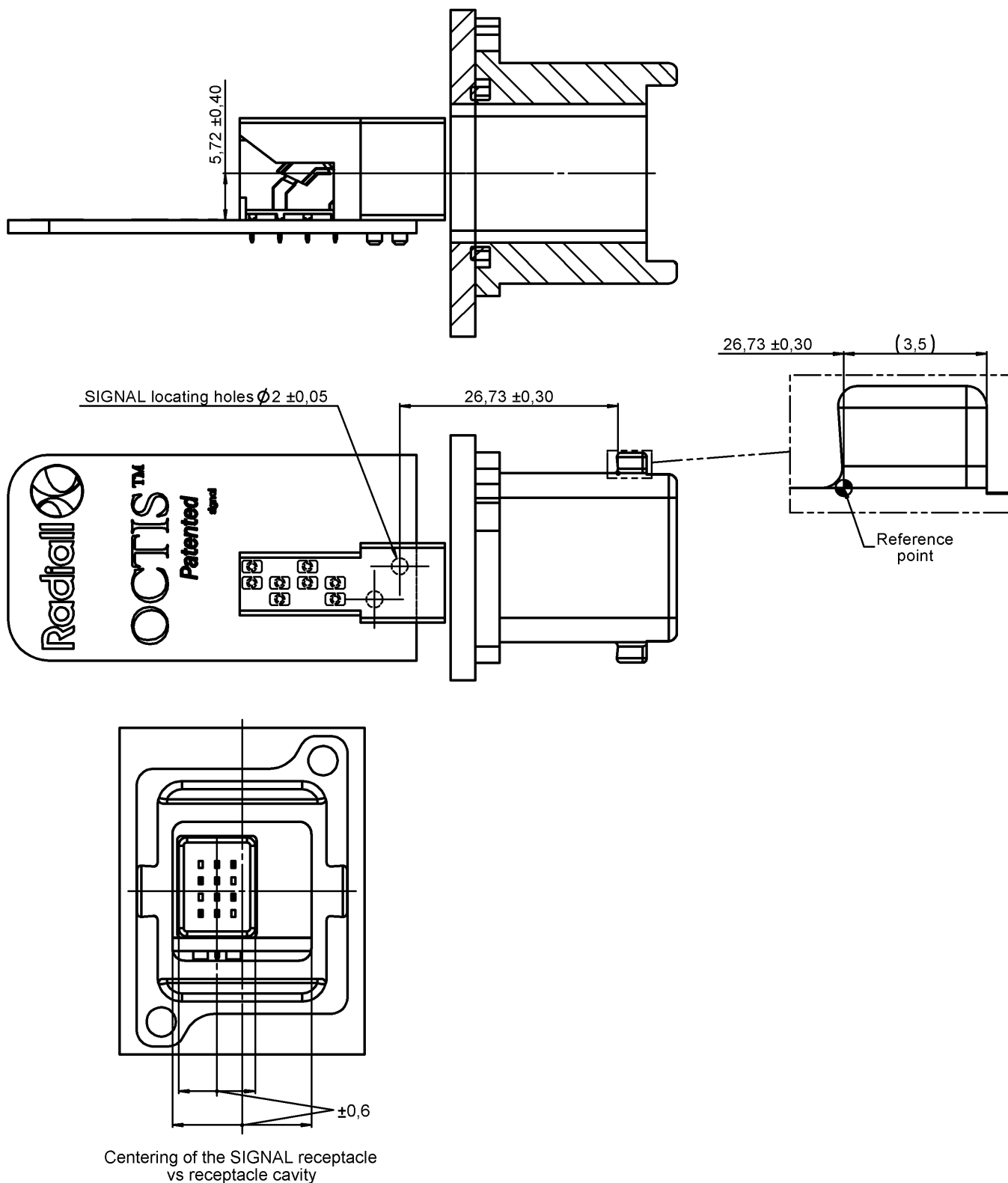
PAGE 9/10

ISSUE 21-02-25A

SERIES OCTIS

PART NUMBER OCTI907505

OCTIS Signal Version



only for positioning illustration

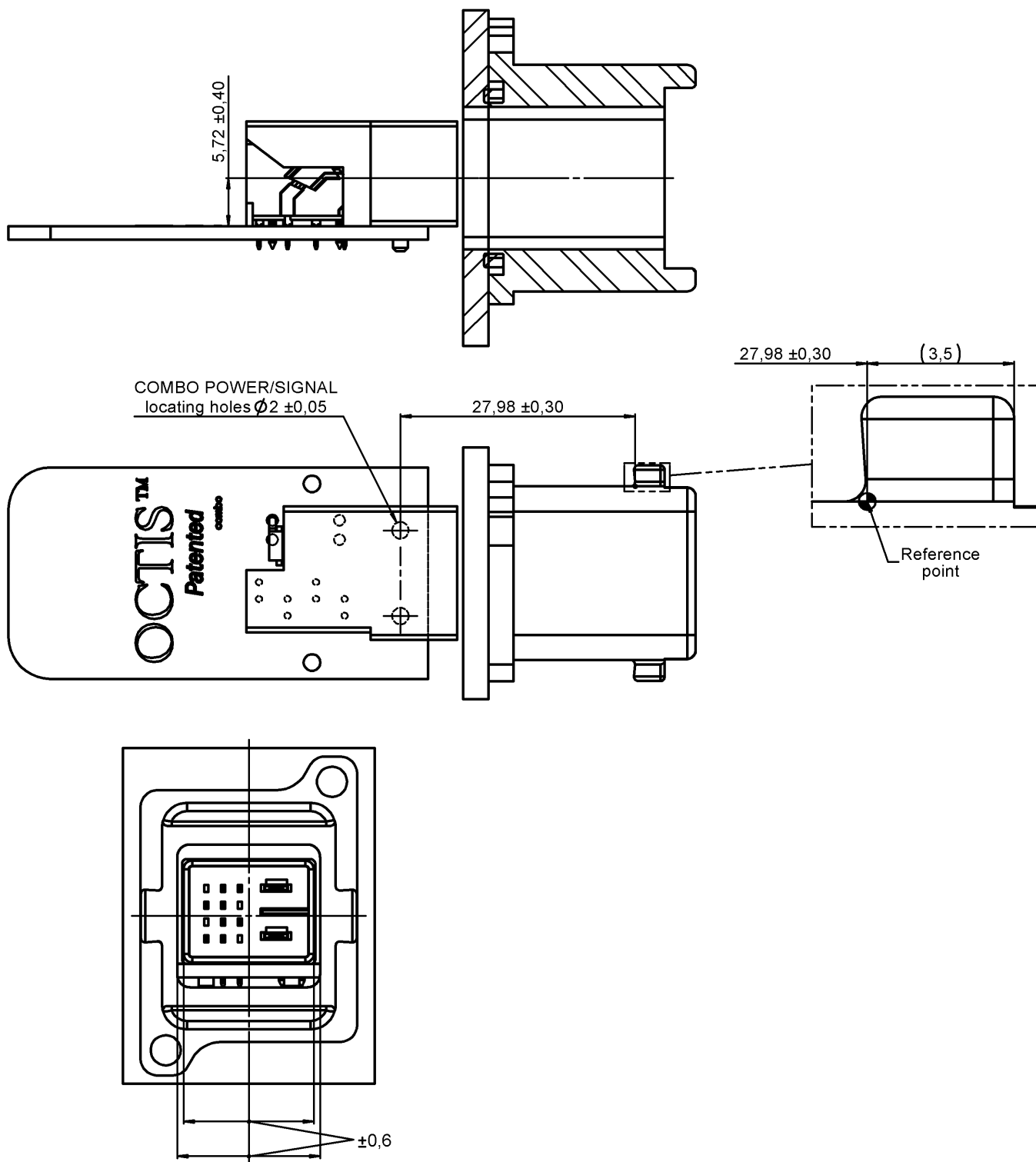
PAGE 10/10

ISSUE 21-02-25A

SERIES OCTIS

PART NUMBER OCTI907505

OCTIS Combo Power/Signal Version



Centering of the COMBO POWER/SIGNAL receptacle  
vs receptacle cavity

only for positioning illustration