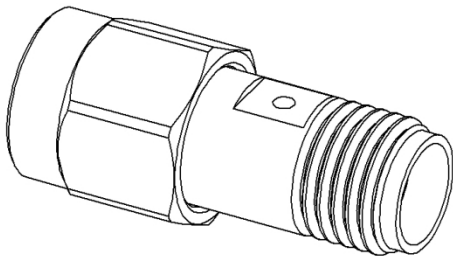
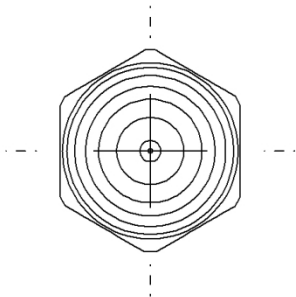
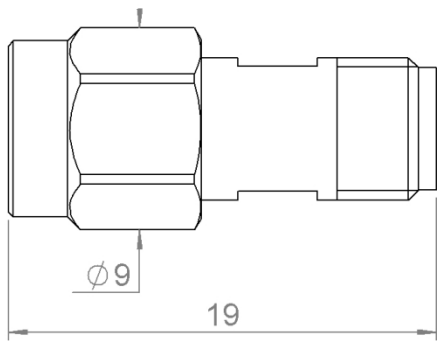
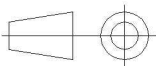


PAGE 1/2	ISSUE 19-04-24M	SERIES DC BLOCK	PART NUMBER R443134000
----------	--------------------	--------------------	-------------------------------



All dimensions are in mm. Tolerances according ISO 2768 c-K



Weight (±15%) **3,7200 g**
Specification

COMPONENTS	MATERIALS	PLATING (µm)
Body	BERYLLIUM COPPER	NICKEL 5
Male center contact	BRASS	GOLD 3 OVER COPPER 2
Female center contact	BERYLLIUM COPPER	GOLD 2.5 OVER COPPER 2.5
Outer contact		
Insulator	PTFE	
Gasket	SILICONE RUBBER	
Substrate		
Resistor		
Others parts		

PAGE 2/2

ISSUE
19-04-24M

SERIES
DC BLOCK

PART NUMBER **R443134000**

ELECTRICAL CHARACTERISTICS

Frequency (GHz)	1 - 4	4 – 12.4
V.S.W.R (\leq)	1.10	1.25
Deviation(\pm dB)	0.25	0.50

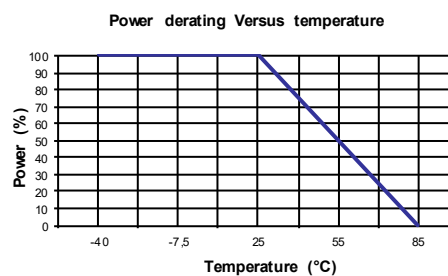
Operating Frequency Range	1 – 12.4	GHz
Impedance	50	Ω
Main line voltage	250	V
Typical capacitance	100	pF
Average power at 25°C	25	W (Free Air Cooled)
		W (Conduction Cooled)

MECHANICAL CHARACTERISTICS

Connectors	SMA	Male Female	MIL C39012
------------	------------	--------------------	-------------------

ENVIRONMENTAL CHARACTERISTICS

Operating temperature range	-40/+85 °C
Storage temperature range	-40/+85 °C



SPECIFICATION

OTHER CHARACTERISTICS