



Series  
NSX

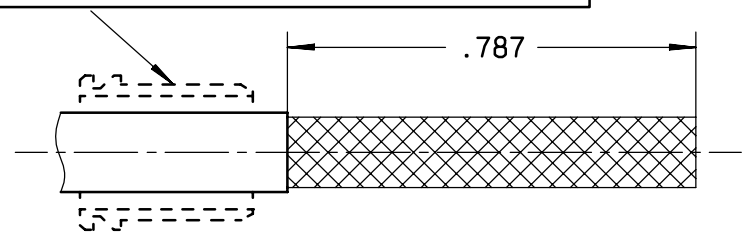
SIZE 8 QUADRAX CONTACTS  
WIRING INSTRUCTIONS  
JFFY02 QUADRAX CABLE AND P506424 AXON TWINAX CABLE

Issue:  
28 JULY 04

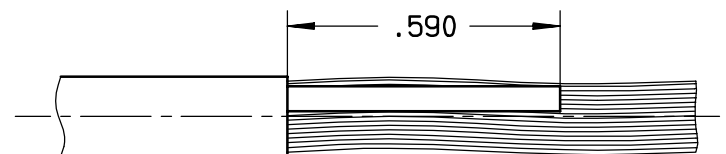
Page  
1 / 2

FOR NON ENVIRONMENTAL PIN CONTACT,SLIDE ALIGNMENT BOOT, FOR ENVIRONMENTAL CONTACT SLIDE SEALING BOOT  
OVER THE CABLE BEFORE STRIPPING.

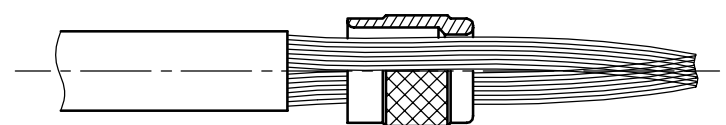
- ① Strip the cable as illustrated



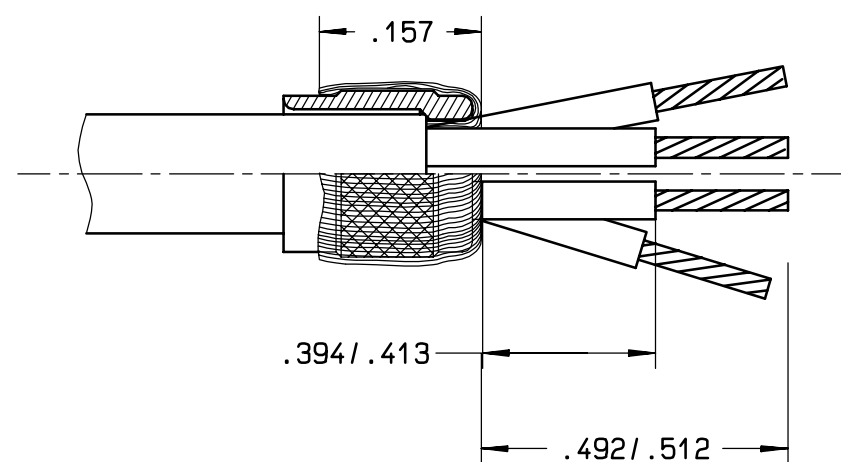
- ② Comb the braid and cut rod fillers  
Cut the 2 or 4 innerr conductors to lenght indicated



- ③ Slide the shield crimp sleeve over the braid against  
the sheat end cut.First,twist the braid end to facilitate  
the sliding of the shield crimp sleeve



- ④ Fold back the braid over the shield crimp sleeve  
Cut the braid and the 2 or 4 conductors as shown



- ⑤ Slide the center contacts on the conductors  
- 2 or 4 pin center contacts  
on the quadrax pin contact  
- 2 or 4 socket center contacts  
on the quadrax socket contact

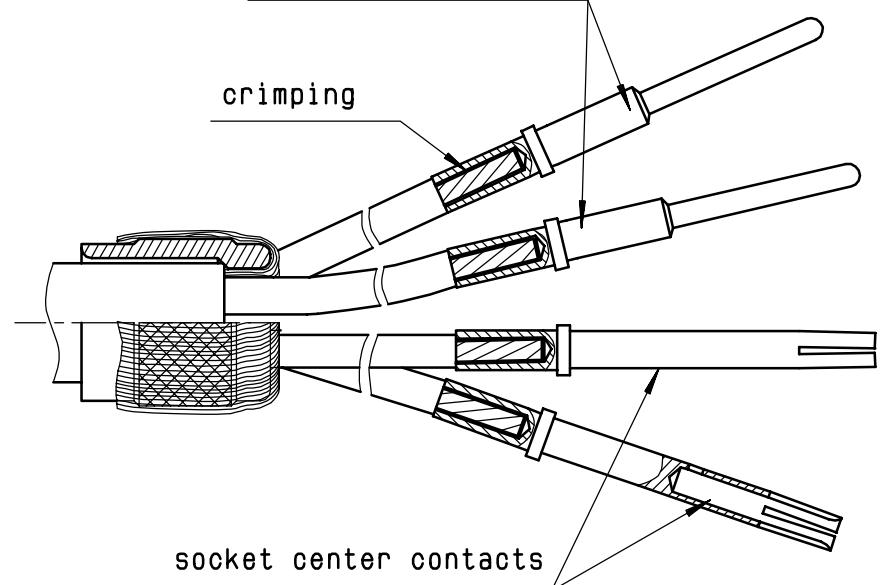
Pin center contacts

crimping

- ⑥ Crimp the center contacts

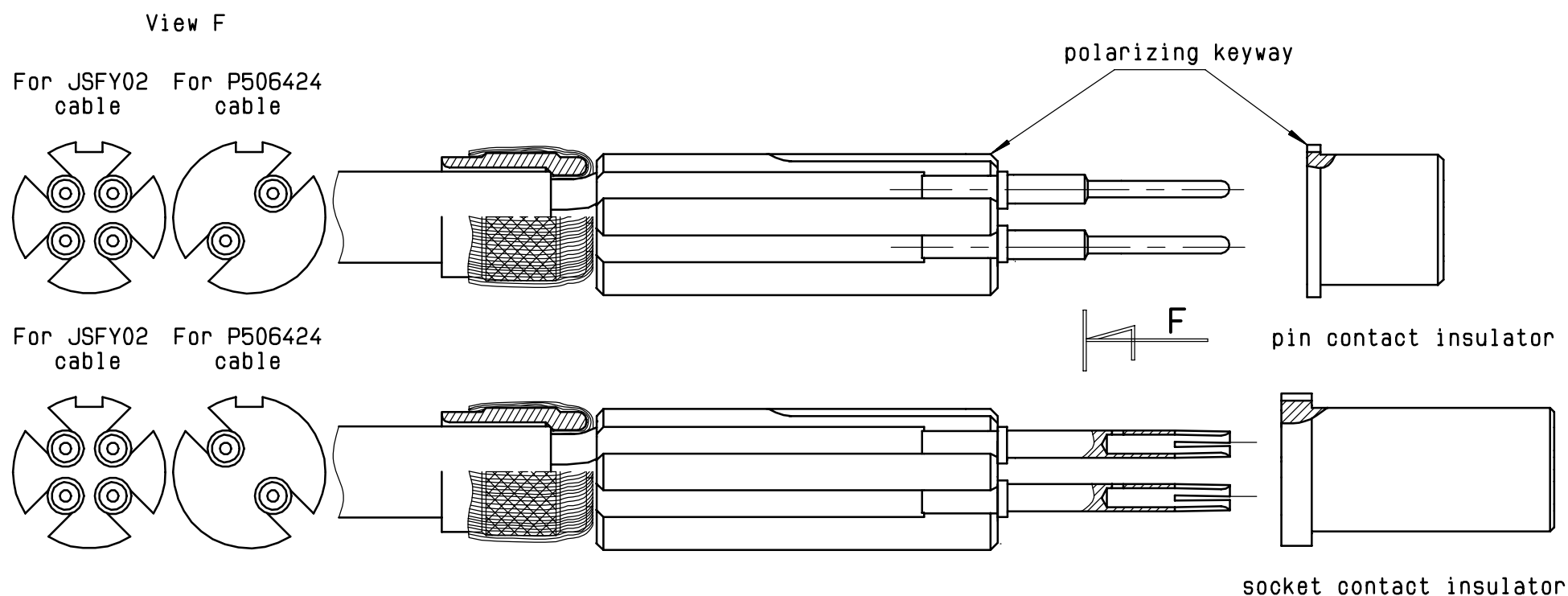
Crimping tool:M22520/2-01 (RADIAL 282 281)  
JSFY02 cable selector on 6  
AXON P506424 cable selector on 5  
positioner:DANIELS K 709 (RADIAL 282 581 010)

socket center contacts



CREATION	.	.	.	.
PEN: M030400075A	.	.	.	.
NOM: MACARI	28 JULY 04	ADDED DIE M22520/5-13	MACARI	LAHOREAU
DATE: 18 SEPT.03	18 JUNE 04	UPDATED SELECTOR FOR P506424 CABLE	MACARI	MONDOT
APPR.: MONDOT	25 MAY 04	SELECTOR 6 WAS 5 FOR JSFY02 CABLE	MACARI	MONDOT
	30 APRIL 04	ADDED AXON CABLE	MACARI	MONDOT
	Issue	Revisions	Name	Approved

- ⑦ Put in place the 2 or 4 conductors into the slots of the spacer  
Then, slide the insulator over the contacts making the polarizing keys coincident



- ⑧ The male and female outer contact bodies have an insulator polarizing key.  
The insulator and the spacer have a polarizing keyway

Then, introduce the sub-assembly into the outer contact body making the polarizing keys coincident

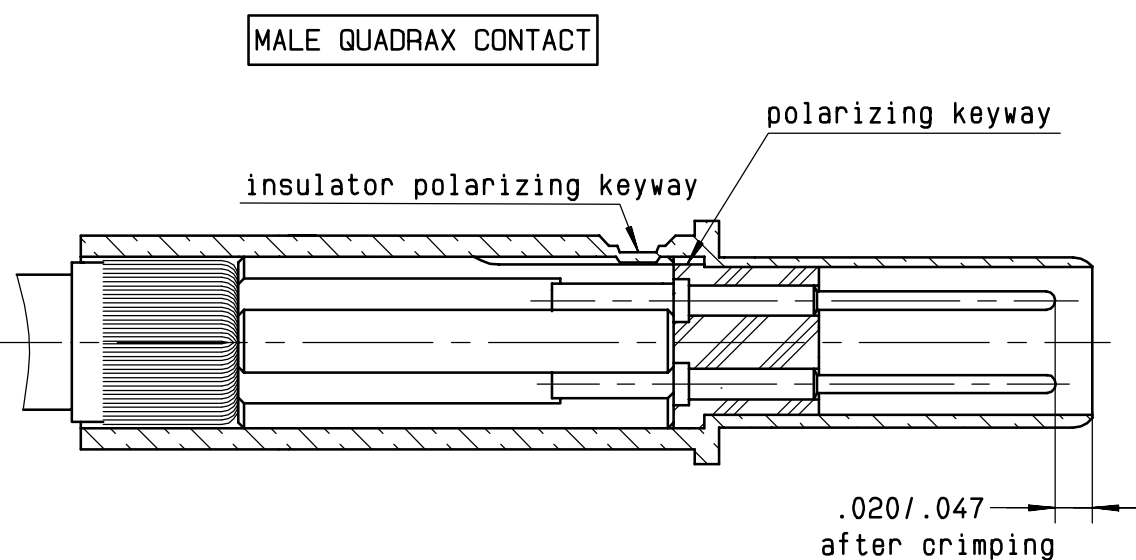
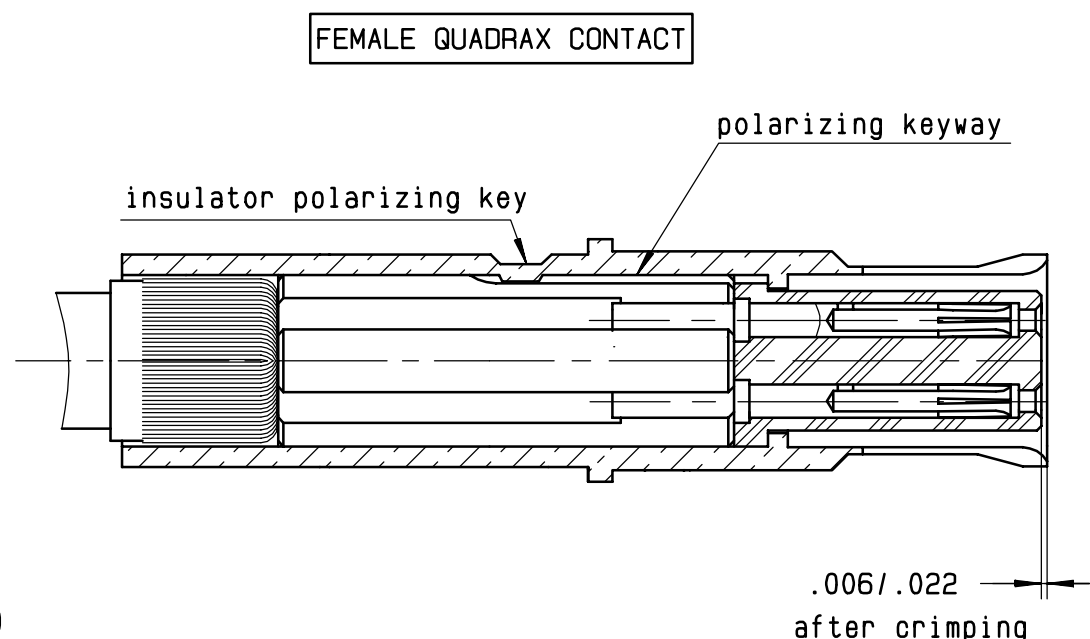
- ⑨ Crimp the outer contact body in the indicated area.

Crimping tool: M22520/5-01 (RADIAL 282 293)

Die: M22520/5-07 or M22520/5-13

Hex die closure A (.255 on flats)

Push on the cable to put all components in correct position, then close the dies completely



Crimping area  
pin and socket contact

black color band

