

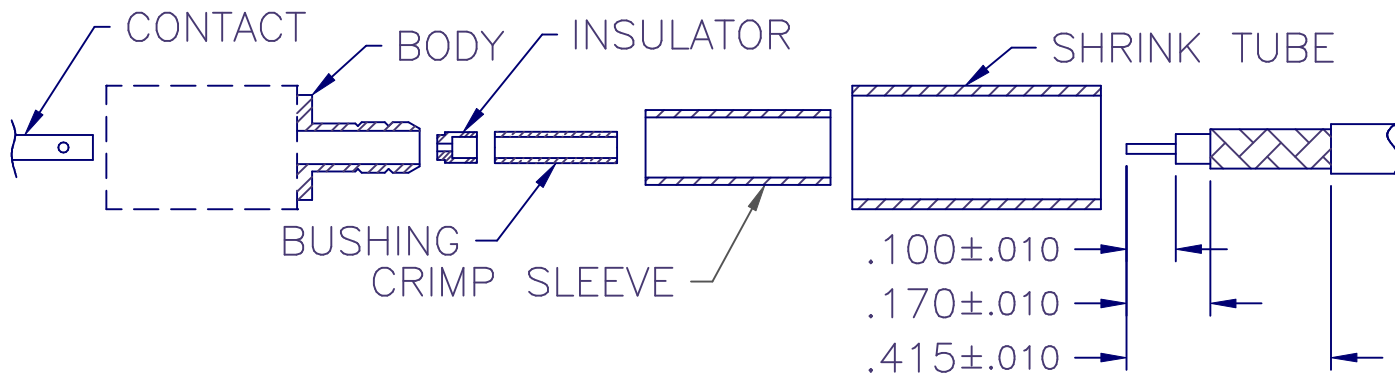


APPLIED ENGINEERING PRODUCTS

(203) 776-2813 FAX (203) 776-8294

www.aep.us

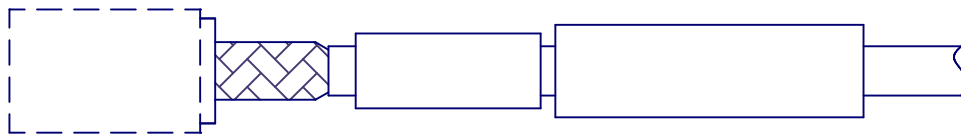
Assembly Instructions



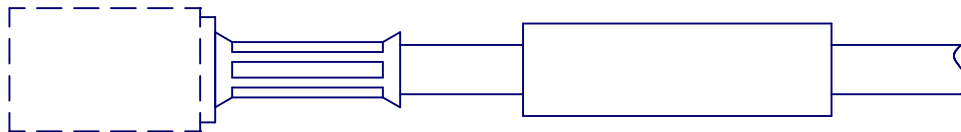
1. TRIM CABLE AS SHOWN. TIN END OF CENTER CONDUCTOR.
2. SLIDE CRIMP SLEEVE AND SHRINK TUBE OVER CABLE JACKET.
3. FLARE BRAID OUT SLIGHTLY BY ROTATING DIELECTRIC.
4. SLIDE BUSHING OVER DIELECTRIC AND UNDER BRAID.
INSTALL REAR INSULATOR (LARGER DIA FIRST) OVER DIELECTRIC.



5. SOLDER CONTACT TO CENTER CONDUCTOR, SEATING ON INSULATOR.



6. INSERT CABLE INTO TAIL-END OF BODY, MAKING SURE BODY GOES OVER INSULATOR AND BUSHING AND UNDER BRAID.
7. CHECK INTERFACE DIMENSIONS OF INSULATOR AND CONTACT.



8. SLIDE CRIMP SLEEVE FORWARD AND USE .128 HEX DIE TO CRIMP.
9. SLIDE SHRINK TUBE OVER CRIMP SLEEVE AND SHRINK TO FIT.

AIS-302-B62-2 REV. -