

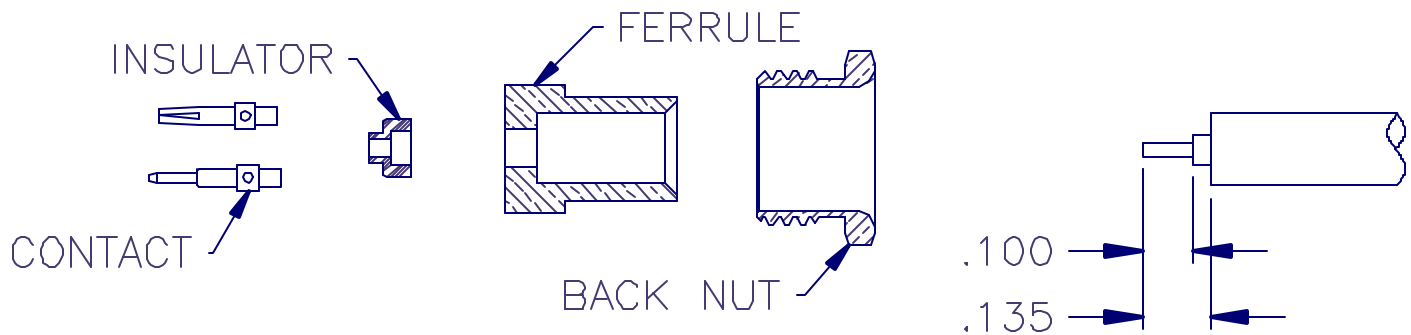


APPLIED ENGINEERING PRODUCTS

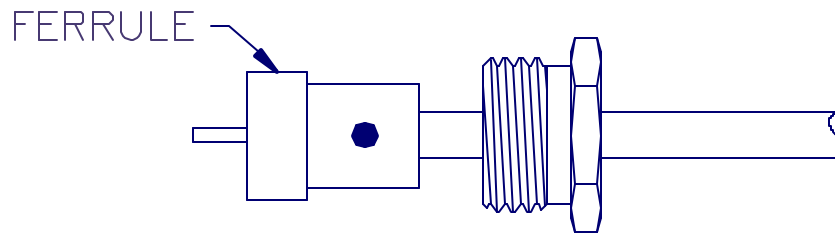
(203) 776-2813 FAX (203) 776-8294

www.aepconnectors.com

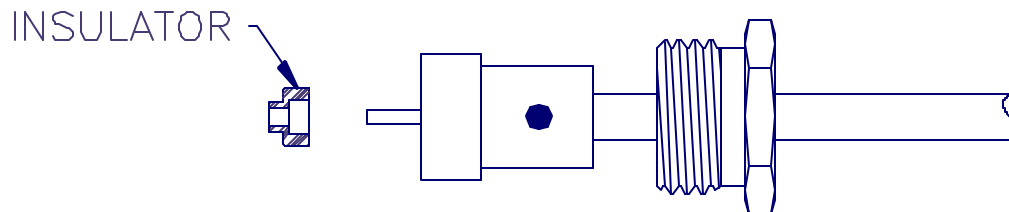
Assembly Instructions



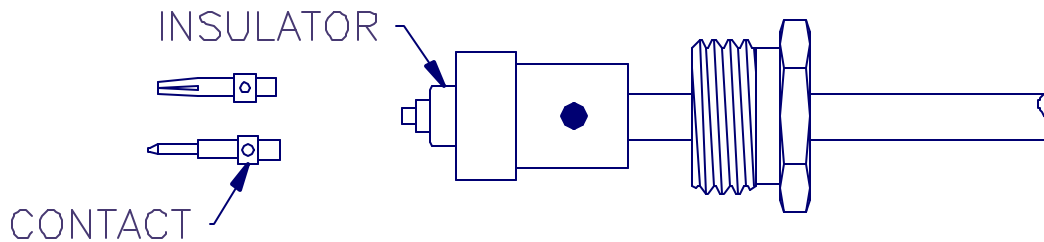
1. TRIM CABLE AS SHOWN.
2. SLIDE BACK NUT ONTO CABLE.



3. SLIDE FERRULE OVER CABLE DIELECTRIC UNTIL IT BOTTOMS ON THE CABLE JACKET.
4. SOLDER FERRULE TO CABLE JACKET. DO NOT DISTURB SOLDER JOINT UNTIL IT HAS COOLED.



5. INSTALL SMALL INSULATOR OVER CABLE DIELECTRIC.



6. SOLDER CONTACT TO CENTER CONDUCTOR.
7. INSERT CABLE ASSEMBLY INTO CONNECTOR BODY AND TIGHTEN BACK NUT TO 140-150 INCH OUNCES TORQUE.

AIS-239-4B103 REV. -