



APPLIED ENGINEERING PRODUCTS

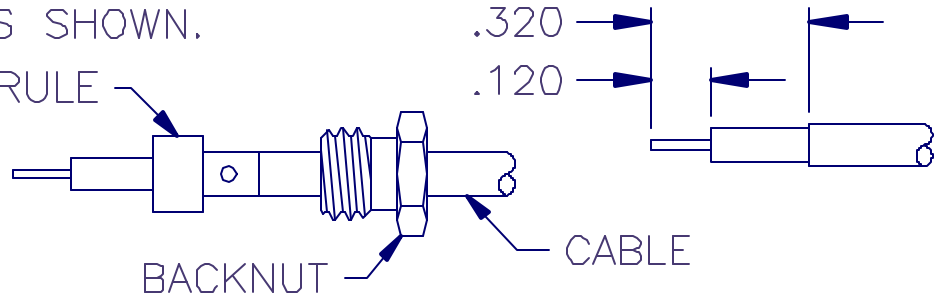
(203) 776-2813 FAX (203) 776-8294

www.aepconnectors.com

Assembly Instructions

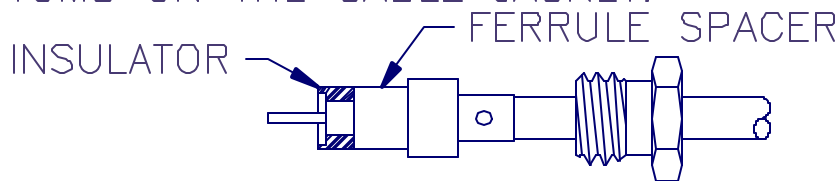
1. TRIM CABLE AS SHOWN.

SOLDER FERRULE



2. SLIDE BACKNUT ONTO CABLE.

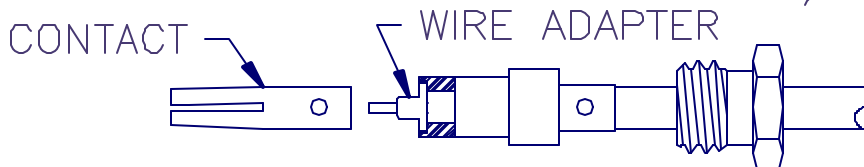
3. SLIDE "SOLDER FERRULE" OVER CABLE DIELECTRIC UNTIL IT BOTTOMS ON THE CABLE JACKET.



4. SOLDER "SOLDER FERRULE" TO CABLE JACKET.
DO NOT DISTURB JOINT UNTIL IT HAS COOLED.

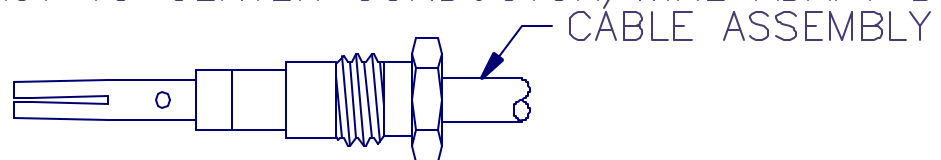
5. SLIDE "FERRULE SPACER" OVER DIELECTRIC UNTIL IT BOTTOMS ON THE SOLDER FERRULE.

6. INSTALL INSULATOR OVER CABLE DIELECTRIC AS SHOWN
(SMALL HOLE TOWARDS FERRULE SPACER).



7. PLACE WIRE ADAPTER OVER CENTER CONDUCTOR. ADAPTER TO SEAT FLAT INSIDE C'BORE OF INSULATOR.

8. SOLDER CONTACT TO CENTER CONDUCTOR/WIRE ADAPT BODY.



9. INSERT CABLE ASSEMBLY INTO CONNECTOR BODY AND TIGHTEN BACK NUT TO 90-100 INCH OZ. TORQUE.

AIS-263-B REV. -