

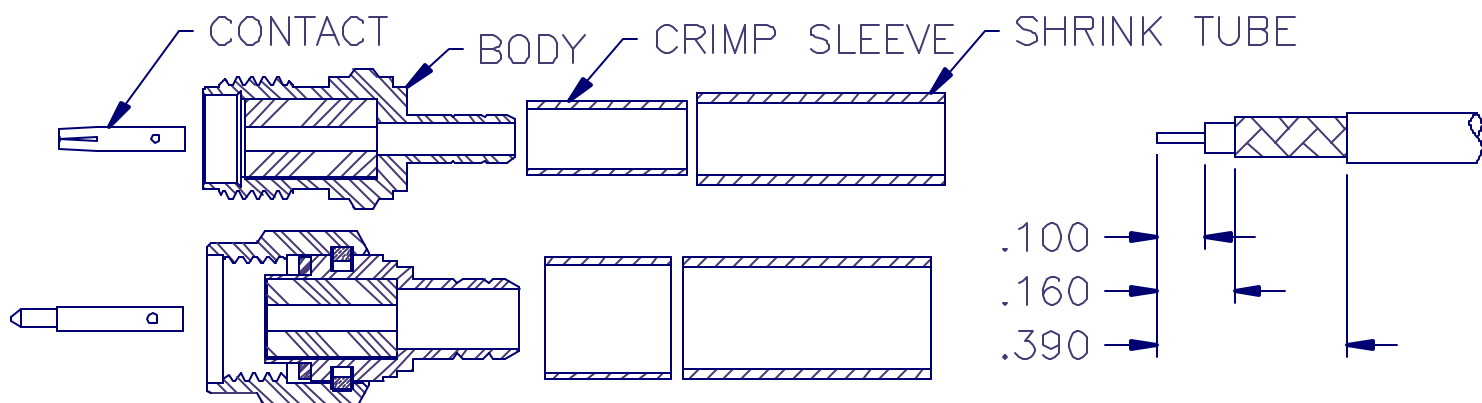


APPLIED ENGINEERING PRODUCTS

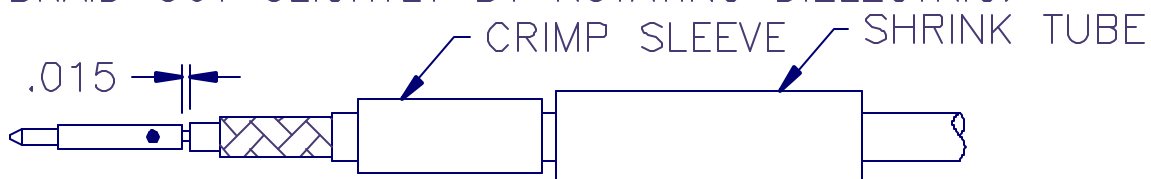
(203) 776-2813 FAX (203) 776-8294

www.aepconnectors.com

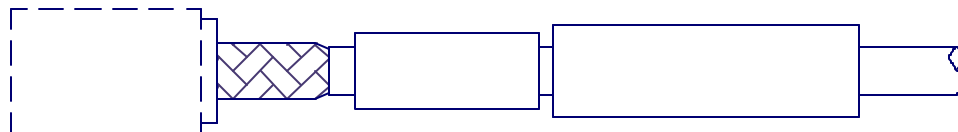
Assembly Instructions



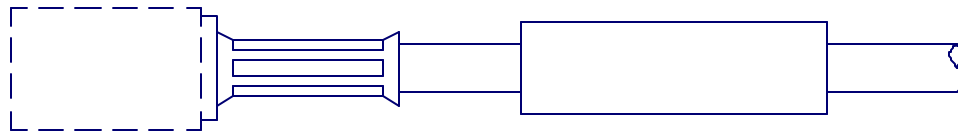
1. TRIM CABLE AS SHOWN. TIN END OF CENTER CONDUCTOR.
2. SLIDE CRIMP SLEEVE AND SHRINK TUBE OVER CABLE JACKET.
3. FLARE BRAID OUT SLIGHTLY BY ROTATING DIELECTRIC.



4. SOLDER CONTACT TO CENTER CONDUCTOR, LEAVING A .015" GAP BETWEEN REAR OF CONTACT AND CABLE DIELECTRIC.



5. INSERT CABLE INTO TAIL-END OF BODY, MAKING SURE BODY GOES OVER DIELECTRIC AND UNDER BRAID.
6. CHECK INTERFACE DIMENSIONS OF INSULATOR AND CONTACT.



7. SLIDE CRIMP SLEEVE FORWARD AND USE .128 HEX DIE TO CRIMP.
8. SLIDE SHRINK TUBE OVER CRIMP SLEEVE AND SHRINK TO FIT.

AIS-243-B14-2 REV. —