



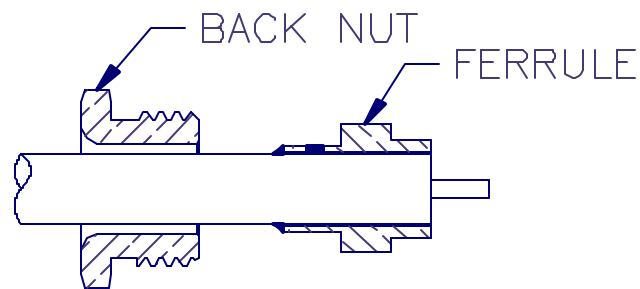
# APPLIED ENGINEERING PRODUCTS

(203) 776-2813 FAX (203) 776-8294

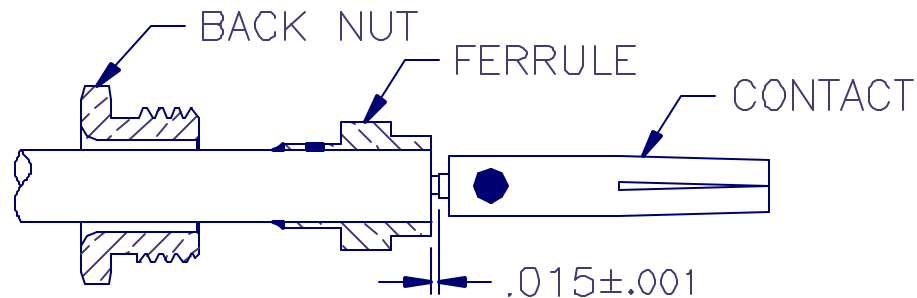
[www.aepconnectors.com](http://www.aepconnectors.com)

## Assembly Instructions

- 
1. TRIM CABLE AS SHOWN.



2. SLIDE BACK NUT OVER CABLE, AND SOLDER FERRULE ONTO CABLE AS SHOWN.



3. MOUNT CONTACT ONTO CABLE AND SOLDER IN PLACE AS SHOWN.
4. MOUNT CONNECTOR HOUSING AND TIGHTEN BACK NUT 90-100 IN.-OZ. IN PLACE. ASSEMBLY IS NOW COMPLETE.

AIS-031-B129 REV A 4560