

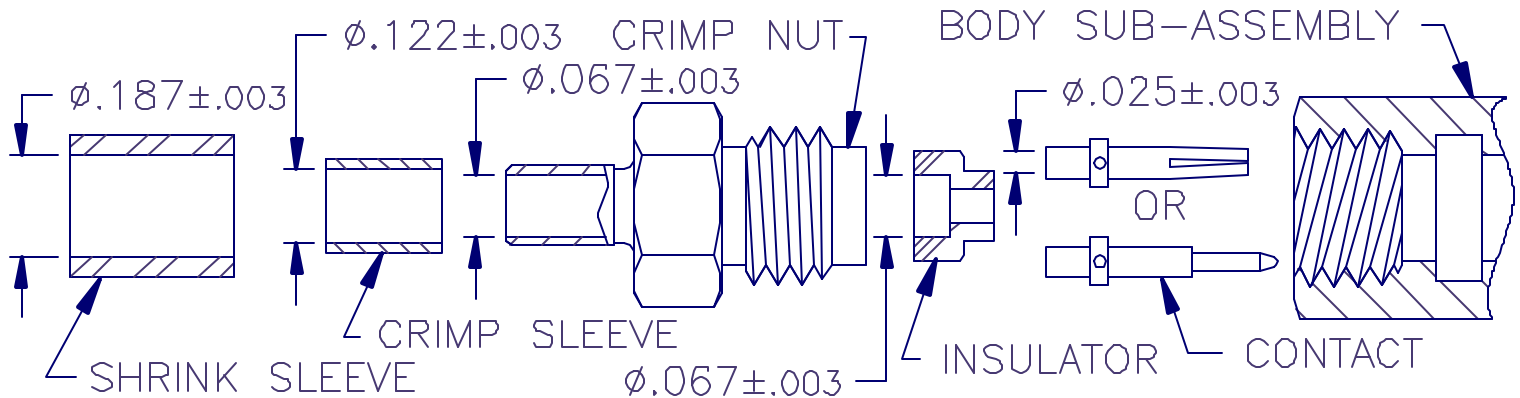


APPLIED ENGINEERING PRODUCTS

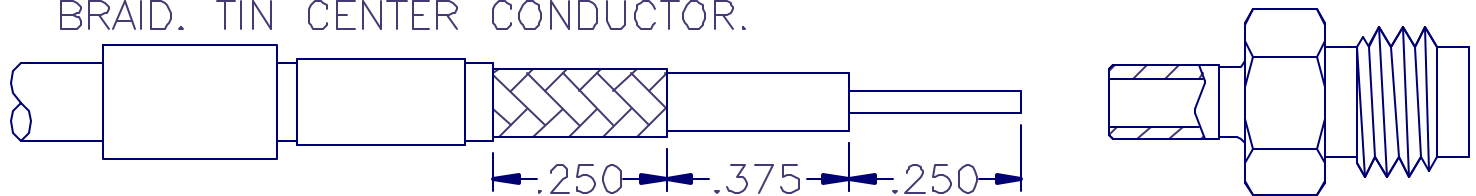
(203) 776-2813 FAX (203) 776-8294

www.aepconnectors.com

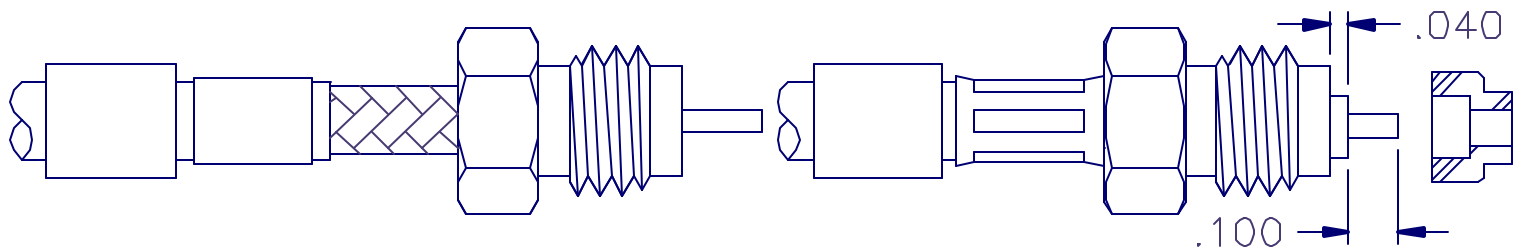
Assembly Instructions



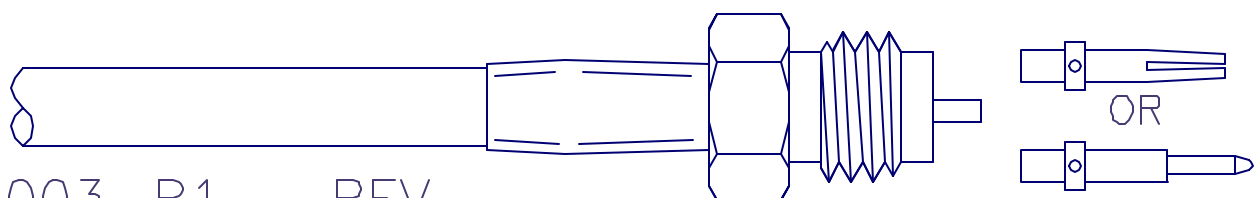
1. SLIDE SHRINK SLEEVE AND CRIMP SLEEVE OVER CABLE. NOTE ALL DIMENSIONS ARE $\pm .010$. TRIM CABLE AS SHOWN. DO NOT NICK BRAID. TIN CENTER CONDUCTOR.



2. INSERT NUT BETWEEN BRAID & DIELECTRIC UNTIL BRAID BUTTS AGAINST THE BACK SURFACE. SLIDE CRIMP SLEEVE FORWARD TO HEX SURFACE, CRIMP USING MIL-C-22520 TOOL, TRIM DIELECTRIC TO $.040$ TRIM CENTER CONDUCTOR TO $.100$.



3. SLIDE SHRINK SLEEVE FORWARD AND SHRINK IN PLACE AS SHOWN. INSERT INSULATOR OVER CENTER CONDUCTOR WITH STEPPED DOWN SECTION FACING OUT. SLIDE CONTACT OVER CENTER CONDUCTOR AND SOLDER IN PLACE. SCREW BODY ONTO CABLE ASSEMBLY. TORQUE TO 90-100 IN. OZ. (50 OHM).



AIS-003-B1

REV. -