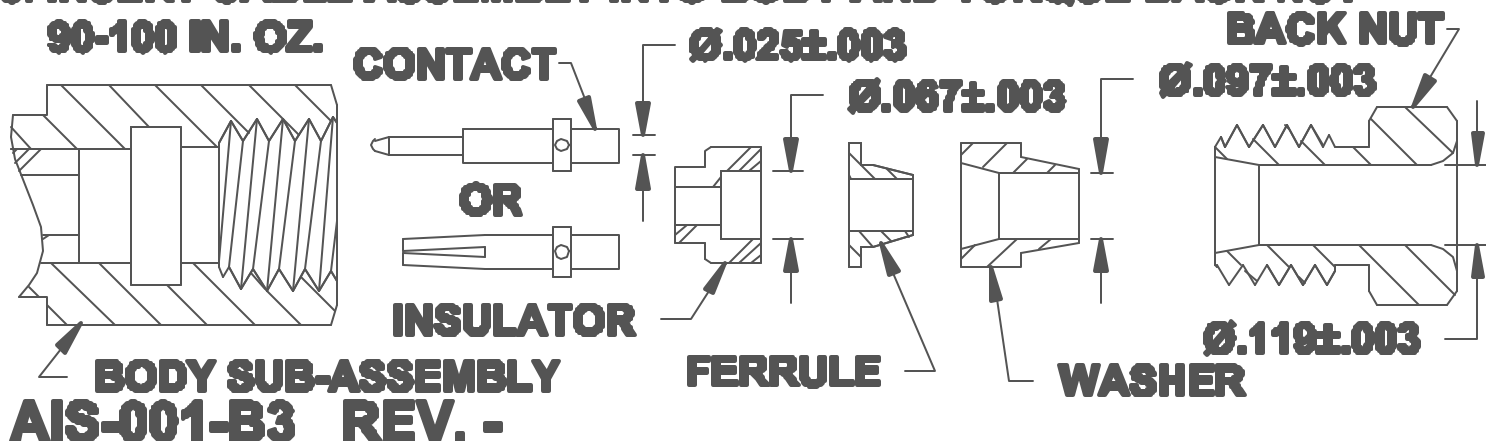


1. CUT CABLE END AT 45° ANGLE.
2. STRIP JACKET BACK 1/2" AND SLIT 1/16" (2) PLACES 180° APART. DO NOT NICK BRAID. NOTE ALL DECIMAL TRIM TOLERANCES +/- .010.
3. SLIP ON BACK NUT, THEN SLIDE THE COMPRESSION WASHER ON UNTIL IT RESTS AGAINST THE JACKET.
4. FAN OUT BRAID RADIALLY AGAINST COMPRESSION WASHER.
5. PUSH FERRULE BETWEEN DIELECTRIC AND BRAID. TRIM BRAID FLUSH. SQUEEZE WASHER AND FERRULE TIGHTLY, EXPANDING BRAID AGAINST MATING SURFACES BY SCREWING BODY ONTO ASSEMBLY.
6. TRIM DIELECTRIC TO PROTRUDE .040 FROM SURFACE OF FERRULE. TIN END OF CENTER CONDUCTOR.
7. INSTALL INSULATOR OVER CABLE DIELECTRIC AND TRIM CENTER CONDUCTOR TO PROTRUDE .040 FROM FACE OF INSULATOR. SOLDER CONTACT TO CENTER CONDUCTOR.
8. INSERT CABLE ASSEMBLY INTO BODY AND TORQUE BACK NUT 90-100 IN. OZ.



AIS-001-B3 REV. -