

Operation Manual

Contents

GENERAL INFORMATION..... 2

 Purpose..... 2

 Equipment Description 2

 Power Requirement..... 3

 Connecting the Switch 3

STEP 1: INSTALLING DEVICE DRIVERS 4

 Successful Installation..... 4

 Failed Installation..... 7

 Windows 8.0 / 8.1 / 10 /11..... 8

 Windows 7 11

 Installation complete 13

STEP 2: EXECUTION 14

 Issues 14

LIST OF CHANGE

ISSUE Rev	DATE	DESCRIPTION OF CHANGE
1 -	September 02 nd , 2016	Initial edition
2 -	January 10, 2024	Second edition

General Information



Figure 1 : The switch

Purpose

This manual contains setup and operation information for Radiall's USB Interface Switch. This option is available for 6 & 8 positions (SP6T & SP8T).

Equipment Description

The switch is equipped with a USB Interface. The switching RF path is controlled manually using executable software provided with the product on a USB key, and is also available on Radiall's website: www.radiall.com.



Figure 2 : Top of the switch

Power Requirement

The product will receive its power from the USB cable.



Figure 3 : USB Cable (Mini USB Type B to USB Type A)

Connecting the Switch

Connect the Mini USB Type B cable termination to the top of the switch and the USB Type A to your computer's USB port as shown in the following pictures.



Figure 4 : USB connection to the switch (Mini Type B)



Figure 5 : USB connection to the computer (Type A)

Step 1: Installing Device Drivers

Successful Installation

On the provided USB Key, open the folder CP210x VCP Windows.

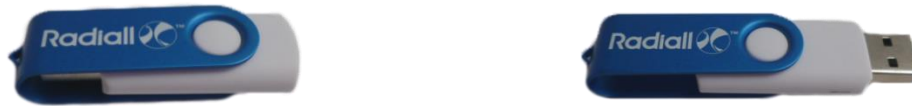


Figure 6 : USB key

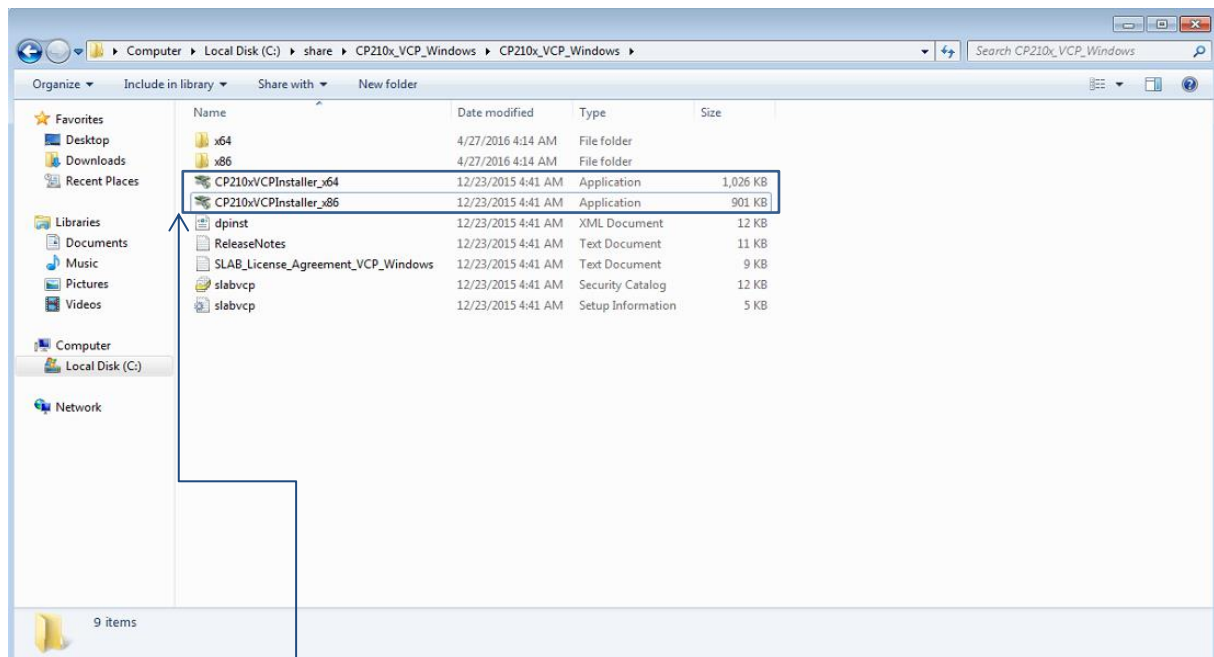


Figure 7 : Device driver's folder

There are two applications in the folder, CP210xVCPInstaller_x64 for 64 bit computers and CP210xVCPInstaller_x86 for 32 bit computers.

To find out if your computer is a 64 or 32 bit operating system, open the folder “computer”; this window shown below will appear, right click in it and select properties:

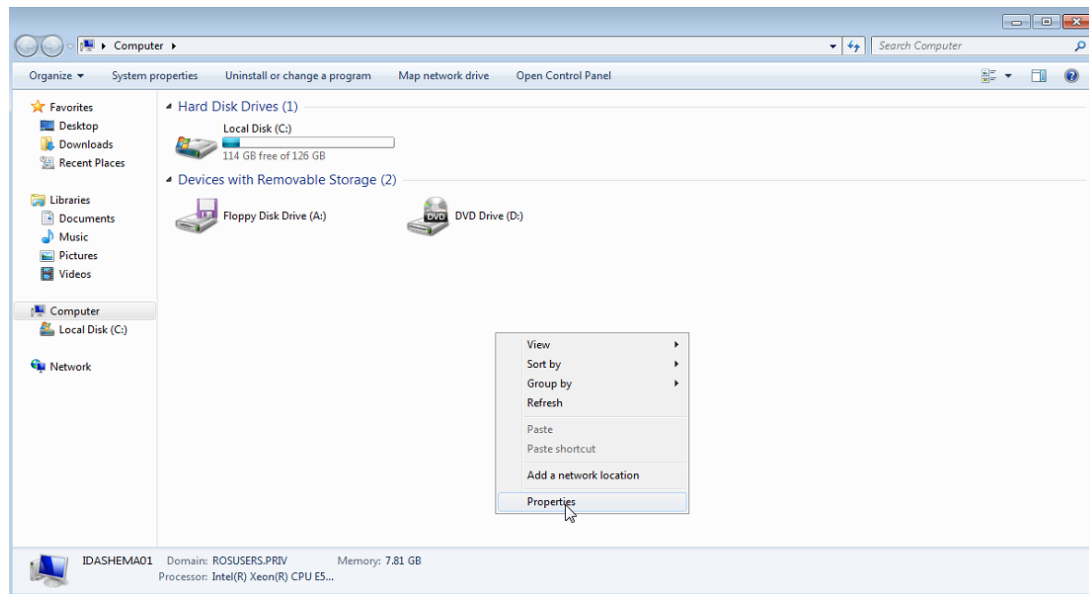


Figure 8 : Computer

And the properties of your computer will appear:

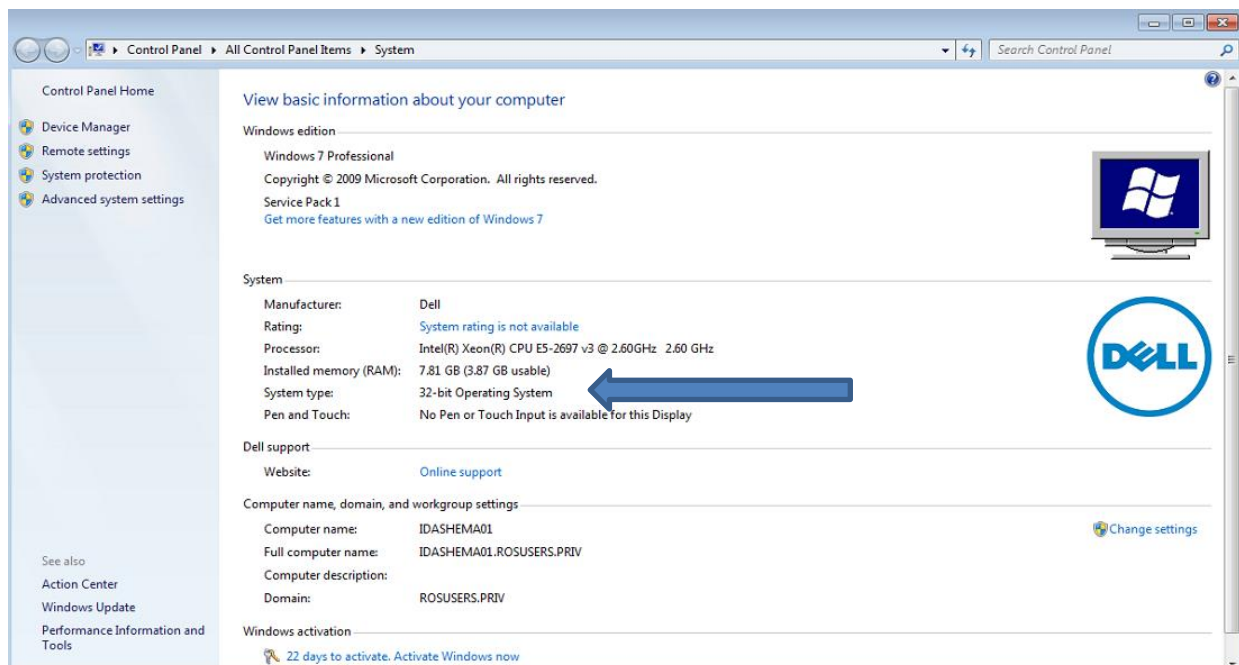


Figure 9 : System's properties

After finding this out, in the file CP210x VCP Windows please run “CP210xVCPInstaller_x64” for 64 bit computers and “CP210xVCPInstaller_x86” for 32 bit computers.



Figure 10 : Drivers installation

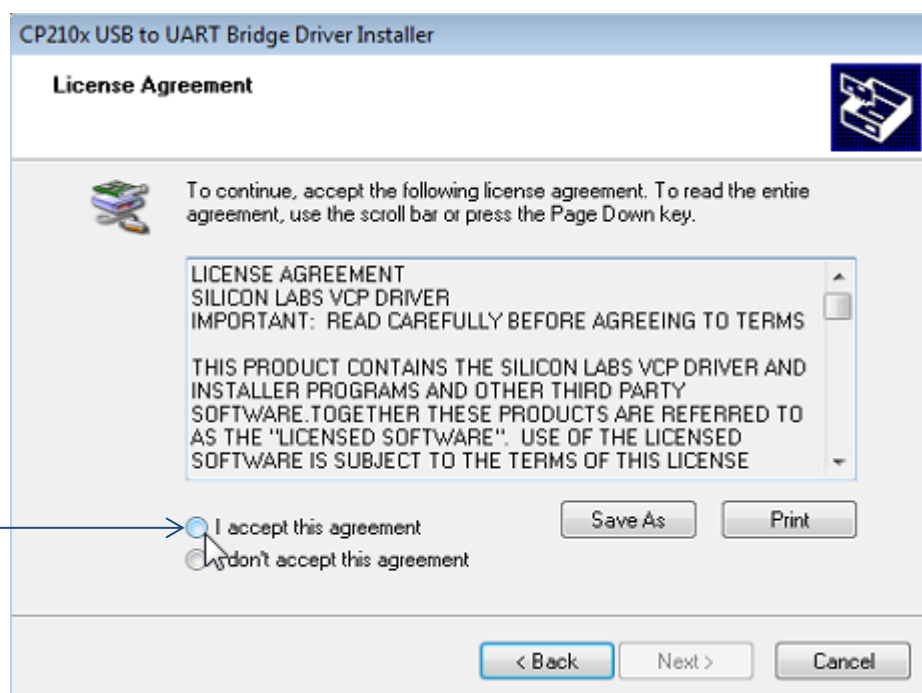


Figure 11 : Drivers installation

Accept the contract conditions then click next

This last window will appear.

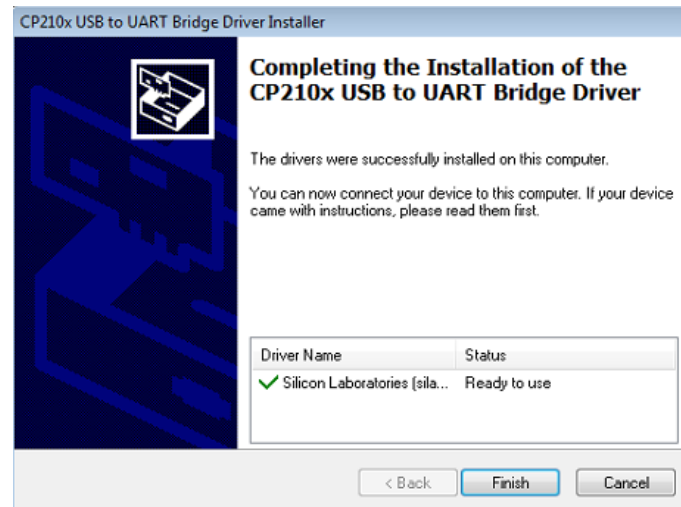


Figure 12 : Drivers correctly installed

If the drivers are correctly installed, the icon will be green as shown in Figure 12 and the status will be ready to use. Click finish.

Failed Installation

In some cases you will see this message at the last window:

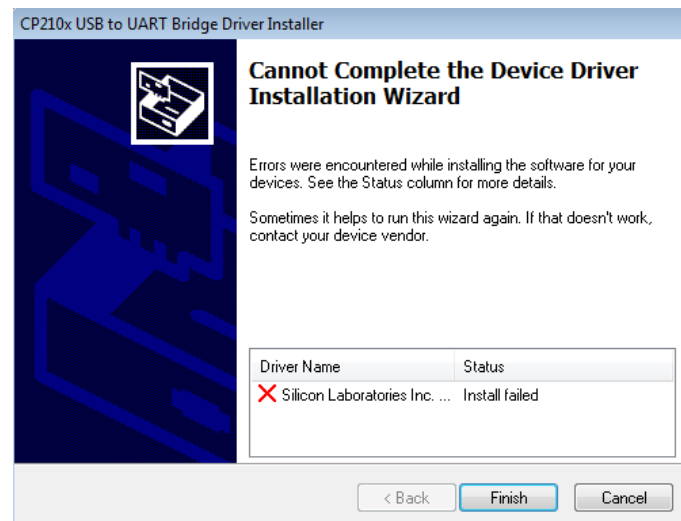


Figure 13 : Installation Failed

This happens for two possible reasons:

- You are not an administrator of your computer, in that case please run the wizard installation as an administrator.
- Your computer can not install unsigned drivers (tested and approved by windows), To allow the installation of unsigned drivers, you must do the following instructions:

Windows 8.0 / 8.1 / 10

Before beginning this process, be sure to save all your work and any opened programs. Your computer will reboot during this process.

First, open the Settings charm. You can do this by moving your mouse to the bottom-right corner of your screen and clicking “Settings” as below.

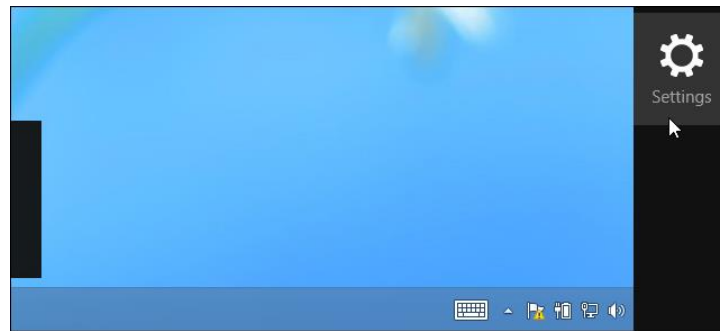


Figure 14 : Settings charm

Select the Change PC settings option at the bottom of the Settings charm as below.

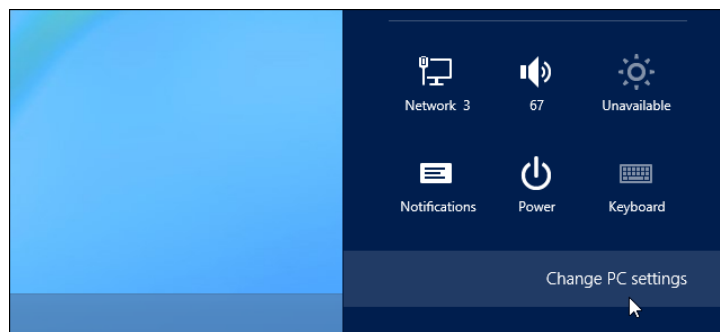


Figure 15 : PC settings's change

In the PC settings app, select the Update & recovery as below.

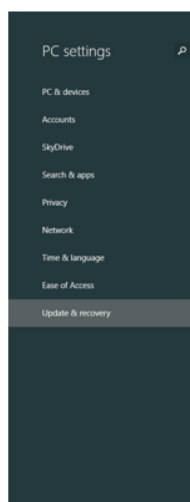


Figure 16: Update and recovery

Choose recovery and then restart for advanced setup.

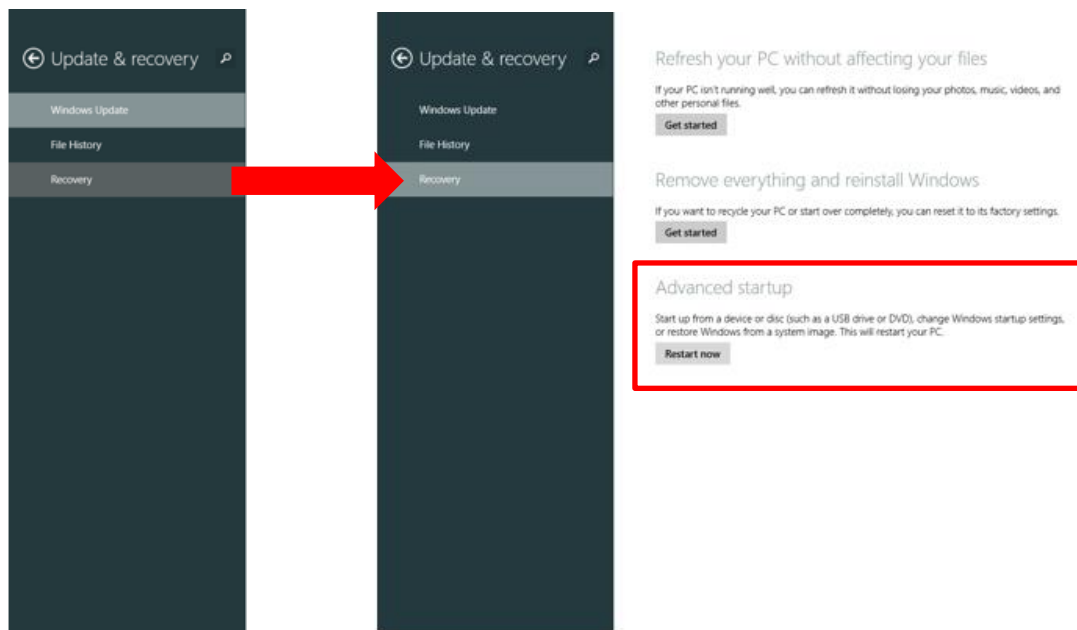


Figure 17 : Restarting for advanced setup

Click on Restart now.

This will lead in the following menu, choose the options as below:

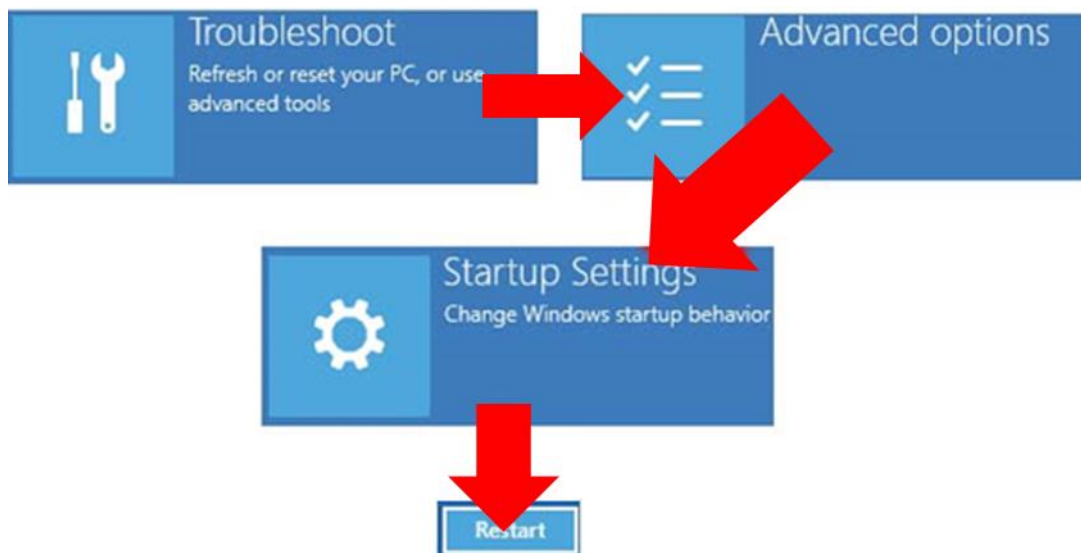


Figure 18 : Restart

That will take you to the final restart.

After reviewing all of the things you could change in the Startup Settings, click on Restart.

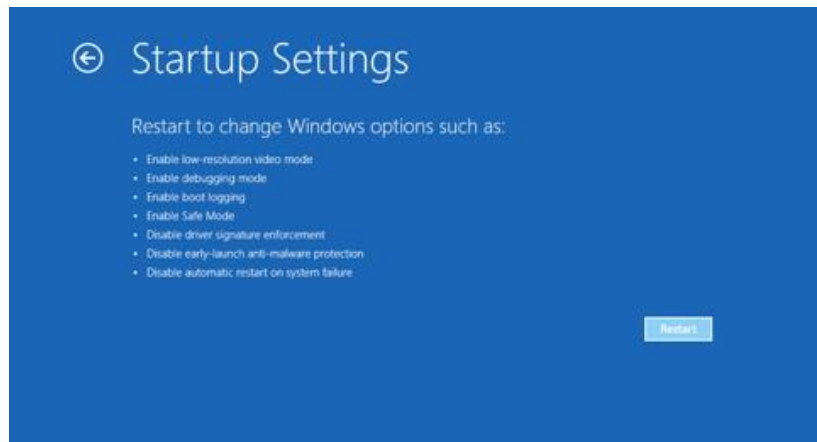


Figure 19 : startup settings

The system will restart and let you choose which mode you wish to boot your system in. Here you have to choose option 7 by clicking the function key F7.

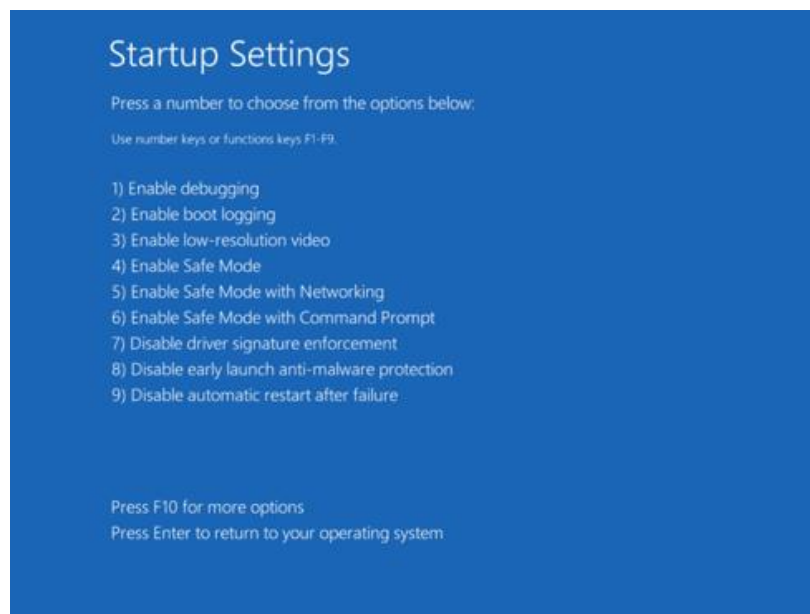


Figure 20 : Startup settings

Windows will immediately boot to its typical lock screen. Sign into Windows 8 as you would normally do, everything will look the same, except Windows will no longer ask for driver signatures until your next reboot.

You can now install unsigned drivers. Windows will alert you if you try to install a driver that is not properly signed, but you will see an "install this driver software anyway" option you can choose.

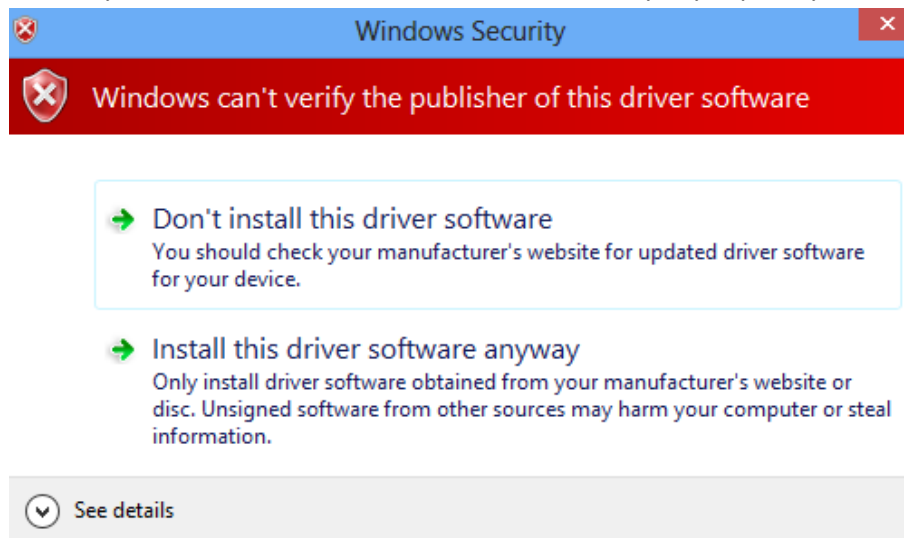


Figure 21 : Windows Security

Windows 7

To turn OFF the Digital for windows 7 signature do these following steps:

1. Open the Command Prompt window by clicking the Start button, click All Programs, click Accessories, and then Right click Command Prompt and select "Run as Administrator".

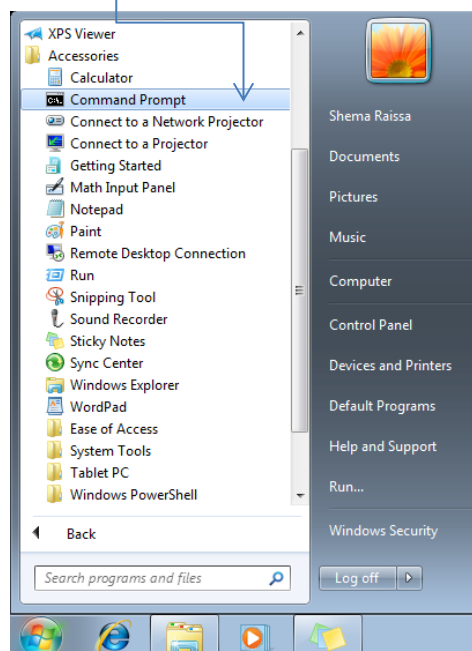
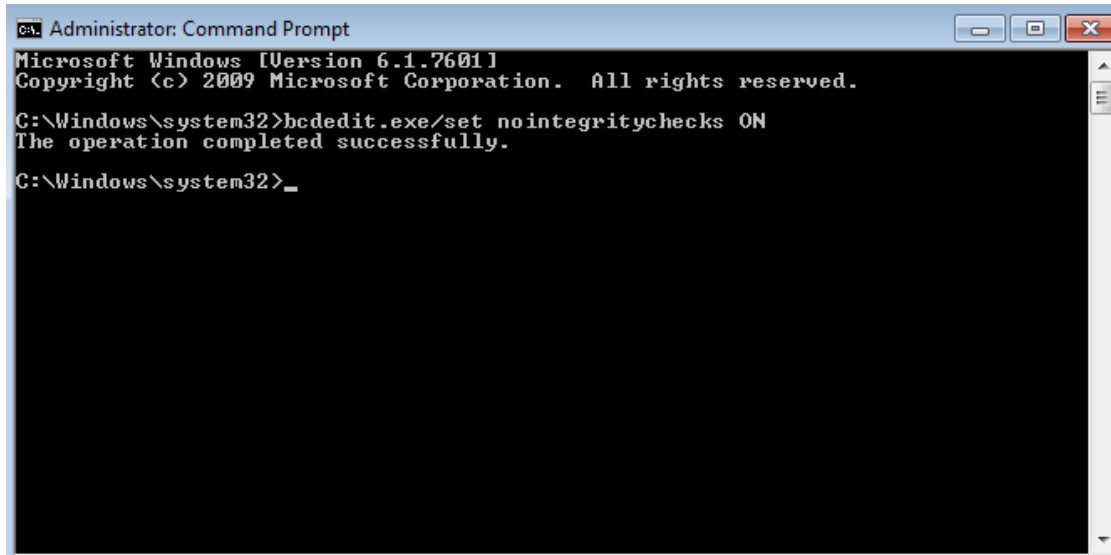


Figure 22 : Windows 7 "start"

2. In the Command Prompt, type the command **bcdedit.exe/set nointegritychecks ON** (including the blank spaces).

This will disable the Digital Signature.



```
Administrator: Command Prompt
Microsoft Windows [Version 6.1.7601]
Copyright (c) 2009 Microsoft Corporation. All rights reserved.

C:\Windows\system32>bcdedit.exe/set nointegritychecks ON
The operation completed successfully.

C:\Windows\system32>_
```

Figure 23 : Command Prompt

To turn Digital signature ON, follow these steps:

1. Open the Command Prompt window by clicking the Start button, clicking All Programs, clicking Accessories, and then Right clicking Command Prompt and select "Run as Administrator".

2. On the Command Prompt type in the command **Bcdedit.exe /set nointegritychecks OFF** (including the blank spaces).

This will enable the Digital Signature.

Installation complete

If the drivers are correctly installed, 1 COM port in Ports (COM and LPT) should appear in the device manager as shown below (product must be connected):

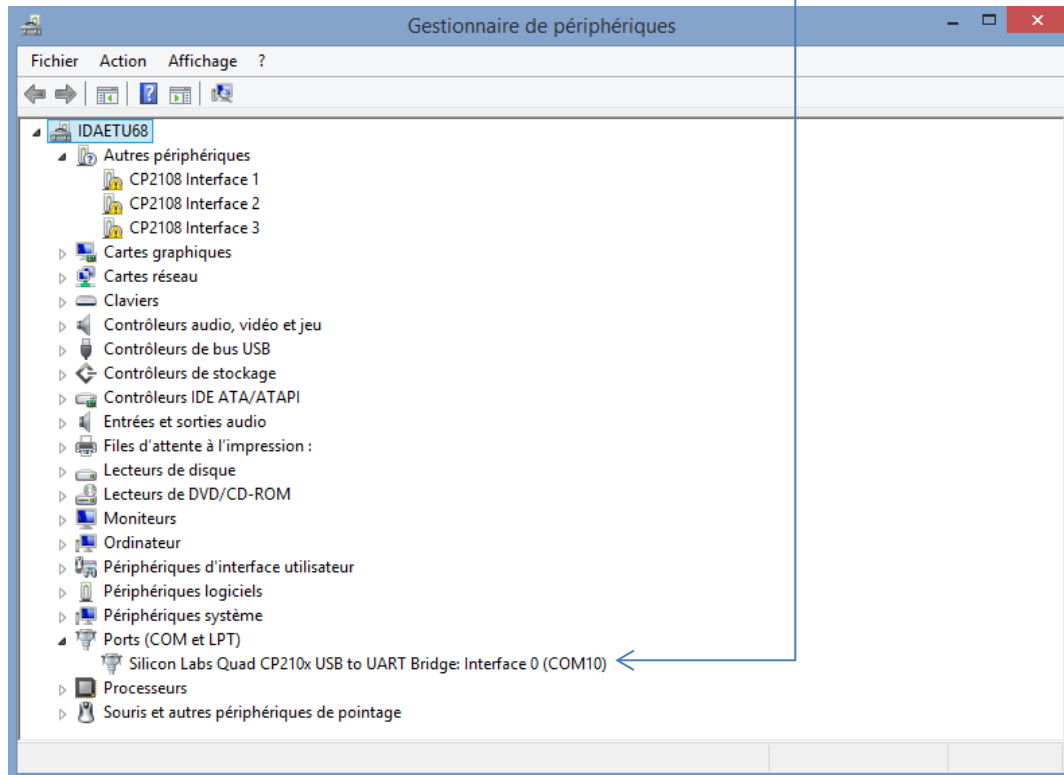


Figure 24 : Device manager

Step 2: Execution

On the USB Key provided (or on the website www.radiall.com), Open the folder “release”, and run *SP6T_USB.exe* or *SP8T_USB.exe*, if the drivers are correctly installed, this Radiall panel will appear:

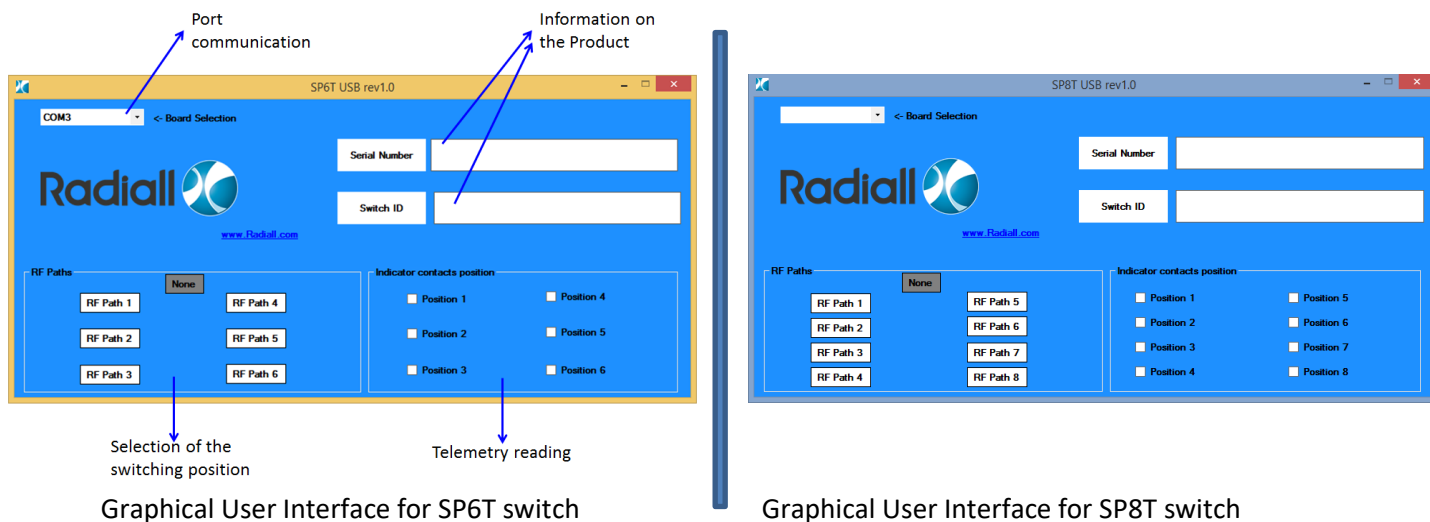


Figure 25 : Graphical User Interface

The product is ready for use.

You can read the serial number and the switch ID.

To switch the RF Path, you have to click on the corresponding button; the telemetry position will be given by the indicator contacts position.

Issues

If an issue occurs, when running the *SP6T_USB.exe* software, this dialog box will appear.

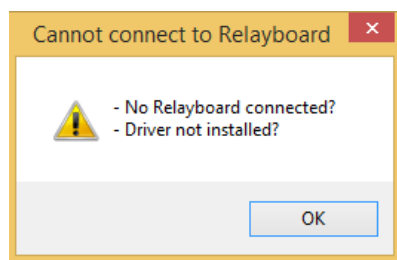


Figure 26 : Connection Issue

If you press OK, this one will appear.

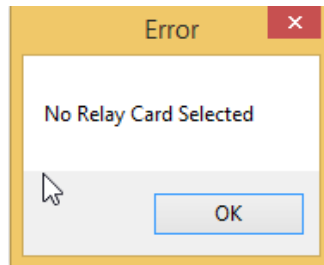


Figure 27 : Error connection

When you press OK again, the graphical user interface will appear but you will not be able to control the device.

Please check the driver's installation and verify your connections.
If the problem persists, please contact us.

CONTACT INFORMATION

RADIALL

**15, Rue de la Garenne
38070 Saint Quentin Fallavier
FRANCE**

Email : switchingproducts@radiall.com

You can also visit the Radiall website to submit a technical support request: www.radiall.com