

MM & MB SERIES

Section 10 Table of Contents

Introduction of MM and MB Series 10-2

Features 10-3

Applications 10-3

MM SERIES

Product Overview of MM Series 10-4

Technical Characteristics 10-5

How To Order Connectors 10-6

Connector Identification 10-6

Contact Arrangements 10-7

Termination Style 10-8

Printed Circuit Drill Pattern 10-9 to 10-10

Guides & Jackscrews 10-11

Panel Cut-Out 10-12

Connector Mating Compatibility 10-13

Backshell Type Availability 10-13

Top Entry Backshells 10-14

MB SERIES

Product Overview of MB Series 10-15

Technical Characteristics 10-16

How To Order Connectors 10-17

Contact Arrangements 10-18

Termination Style 10-19

Panel Cut-Out 10-20

Printed Circuit Drill Pattern 10-21 to 10-24

Guides & Jackscrews 10-25

Connector Mating Compatibility 10-26

Backshell Type Availability 10-27

Top Entry Backshells 10-28

Side Entry Backshells 10-29

Accessories 10-30

INTRODUCTION

The Radiall miniature and subminiature rectangular multicontact connectors meet the requirements of the standard MIL-C-28748 performance requirements. They are rugged connectors and offer high performance for high contact density.

The connectors in each series consist of an insulator with male and female contacts which include several pin sizes.

FEATURES

Each connector features a male guide at one end and a female guide at the other. This arrangement ensures polarization of the connector when coupled. These guides can be smooth (rack guides) or screw closing (fixed or rotating jackscrews).

The contacts male or female are made of copper base alloy plated gold over nickel. The female contacts have 4 slots which ensures perfect mating, constant contact pressure and excellent mechanical and electrical performance. The contacts have a slight amount of float in order to allow self alignment during mating. Each series includes a different termination type; solder pot, straight or right angle solder pin for PCB, and wrapping.

THE MM SERIES

This series consists of six sizes of connectors with contact arrangements for 7, 14, 20, 26, 34 and 50 size 22 contacts Ø 0.76 mm / 0.030 inch.

The series offers four types of terminations:

- Solder pot for wire (AWG 22 max)
- Straight solder pin for PBC
- Right angle solder pin for PBC
- Wire wrap

These connectors are fitted with rack guides or fixed or rotating jackscrews at each end. A protective covering for wire terminations can be installed on the connector.

THE MB SERIES

This series consists of twelve sizes of connectors with contact arrangements for 2, 3, 5, 11, 14, 20, 25, 34, 42, 50 and 75 size 20 contacts Ø 1 mm / 0.039 inch.

The series offers three types of terminations:

- Solder pot for wire (AWG 20 max)
- Straight solder pin for PBC
- Right angle solder pin for PBC

These connectors are fitted with rack guides or fixed or rotating jackscrews at each end.

Wires and soldered terminations for wire can be protected by either top or side entry backshells or by potting covers for 2 to 14 contacts connectors.

A range of top and side entry backshells with cable clamps in yellow anodized aluminium alloy are available. They are designed to protect the soldered wire connections, provide strain relief to the cable and facilitate the disengagement of the mated connectors.

Fitted with threaded posts they are suitable for connectors fitted with rack guides or fixed jackscrews. When fitted with rotating jackscrew guides they are fixed to the connectors without guides and jackscrews.

For the MB series there are also thermoplastic covers for "potting" ensuring that the terminated wires at the back of the insulator are protected.

APPLICATIONS

Their mass and volume make them particularly suitable for the following applications: civil and military, in-flight equipment, instrumentation, missile, etc.

Originally developed for rack and panel assemblies they can be adapted for cable to cable applications with cable clamp backshell.

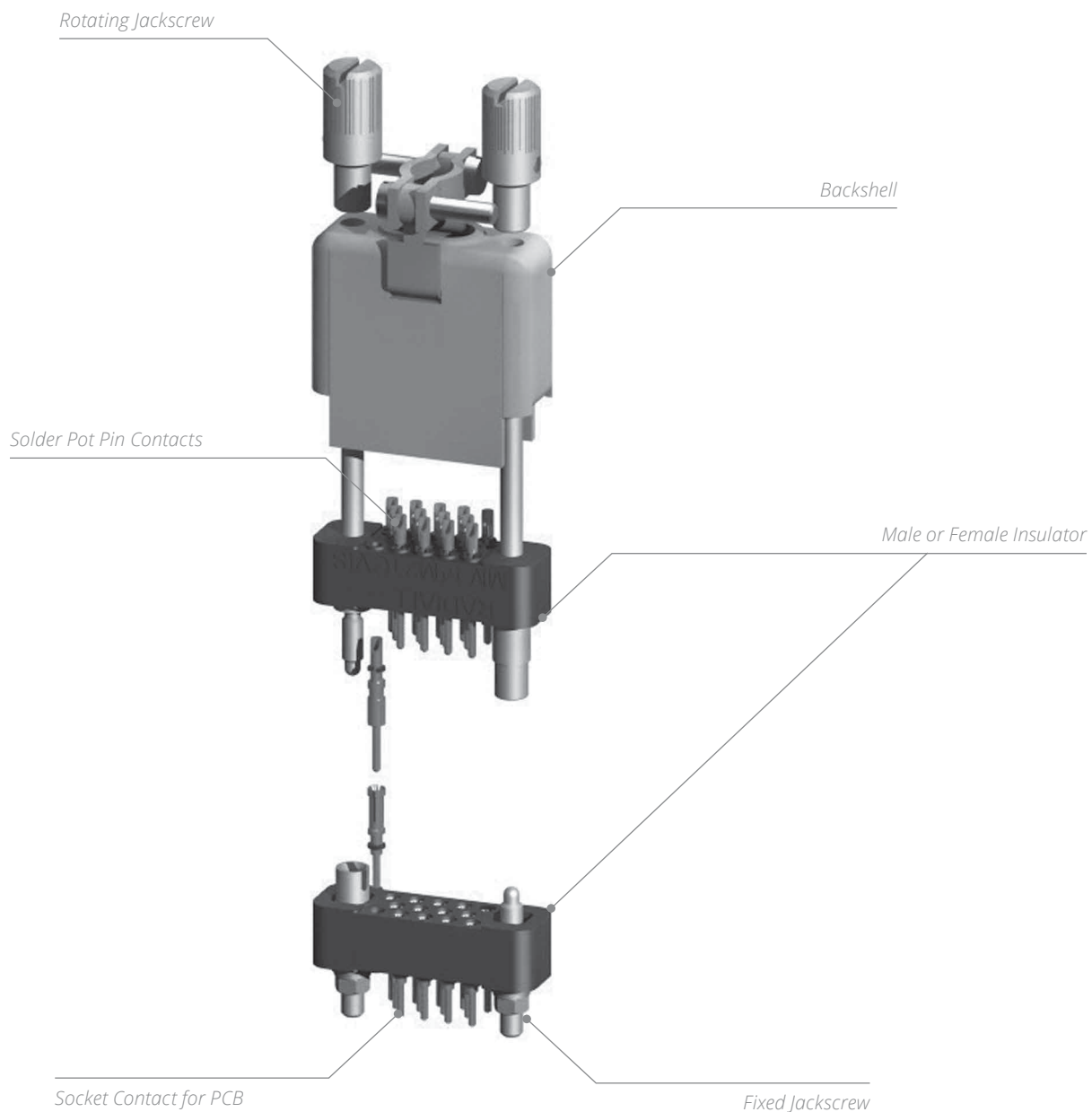


© Dassault Aviation - K. Tokunaga

MM Series

PRODUCT OVERVIEW

Detailed view of the various parts of the MM series connector.



MM Series

TECHNICAL CHARACTERISTICS**ELECTRICAL**

Conforms to MIL-C-28748 performance requirements and UTE-C-93426 HE611 standard.

- Current Rating: 5A
- Test Voltage at Sea Level: 1,000 Vrms/50 Hz
- Operating Voltage at Sea Level: 350 Vrms/50 Hz
- Operating Voltage at 70,000 ft: 90 Vrms/50 Hz
- Insulation Resistance: > 5,000 MΩ
- Contact Resistance: < 5 mΩ

MECHANICAL & ENVIRONMENTAL

Conforms to MIL-C-28748 performance requirements and UTE-C-93426 HE611 standard.

- Temperature Range: -55 °C (-131 °F) to 125 °C (257 °F)
- Durability: 500 Mating Cycles
- Shock: 100g/6ms
- Vibration: 20g / 10-2000 Hz
- Humidity: 56 Days
- Contact Insertion Force: 3N
- Salt Spray: 48 Hours

MATERIALS

DESCRIPTION	MATERIAL	FINISH
Insulator	Glass Filled Diallylphthalate Conform to MIL-M-14SDG-F	-
Pin Contact	Copper Alloy	Gold over Nickel
Socket Contact	Copper Alloy	Gold over Nickel
Guides & Jackscrews	Stainless Steel	-
Backshells	Aluminium Alloy	Yellow Anodized

MASSES G (OZ)**WEIGHT OF CONNECTORS MATED**

CONTACT ARRANGEMENT	07	14	20	26	34	50
WITHOUT GUIDES	2.8 (0.99)	5 (0.18)	6.6 (0.23)	8.1 (0.29)	12.1 (0.43)	15 (0.53)
WITH GUIDES OR JACKSCREW	4.7 (0.17)	7 (0.25)	8.4 (0.30)	10 (0.35)	13 (0.46)	17.1 (0.60)
WITH BACKSHELLS AND GUIDES OR JACKSCREWS	12 (0.42)	15.5 (0.55)	17 (0.60)	19.4 (0.68)	23.2 (0.81)	32.8 (1.16)

HOW TO ORDER CONNECTORS

MM

SERIES

MM SERIES

Contact arrangement (refer to page 10-7)

07 - 14 - 20 - 26: 34: 50

CONTACT TYPE

M: Pin

F: Socket

TERMINATION STYLE (REFER TO PAGE 10-8)

20: Solder pot

21: Straight solder pin for PBC

22: Right angle solder pin for PBC

23: Wrapping contact 1 wrap

24: Wrapping contact 2 wrap

25: Wrapping contact 3 wrap

GUIDES AND JACKSCREWS (REFER TO PAGE 10-11)

00: Without guides and jackscrews ^[1]

G3: Rack guides ^[2]

GV: Fixed jackscrews ^[2]

VR: Short rotating jackscrews

VL: Long rotating jackscrews ^[3]

THREAD, GUIDES OR JACKSCREWS

00: Without guides and jackscrews

IS: ISO (M2 × 0.4)

NC: 2-56 UNC

CONNECTOR IDENTIFICATION

The part number is printed on the insulator side

Notes

1. Connectors to be used with backshell HC (see page 10-13) and rotating jackscrews

2. Connectors to be used with backshell HA (see page 10-13)

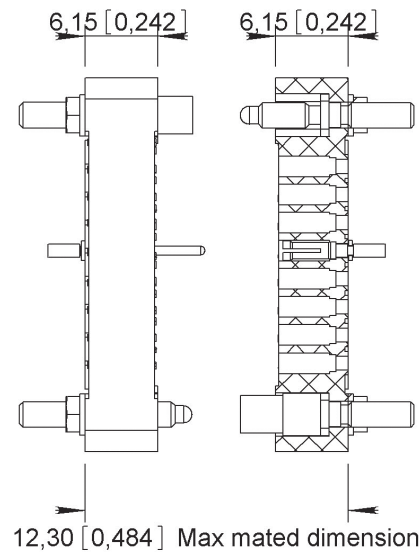
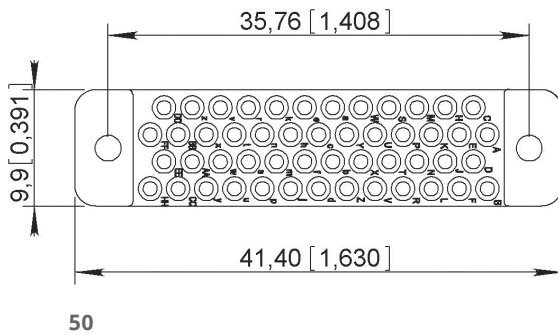
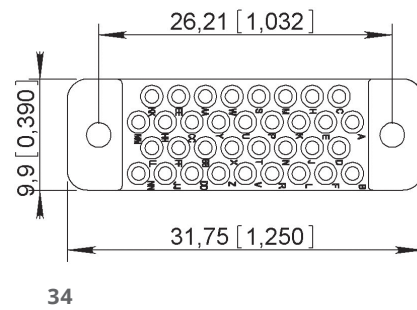
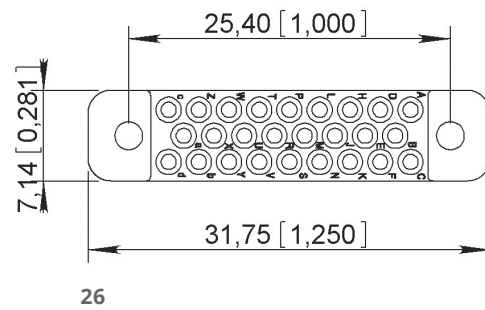
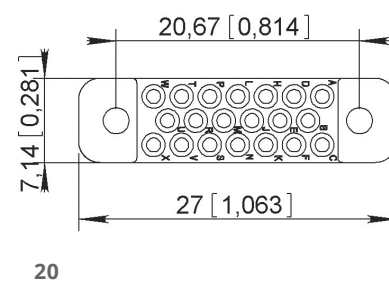
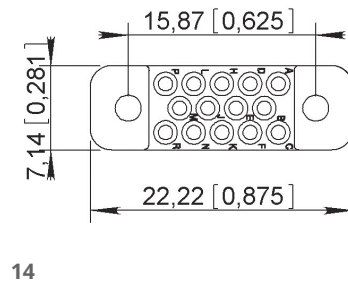
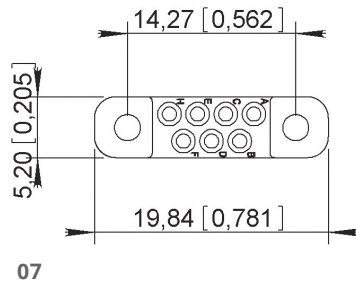
3. VL jackscrew assembly is not available for termination style type 22

MM Series

CONTACT ARRANGEMENTS

MALE CONNECTOR

WIRING SIDE DIMENSIONS MM (IN.)

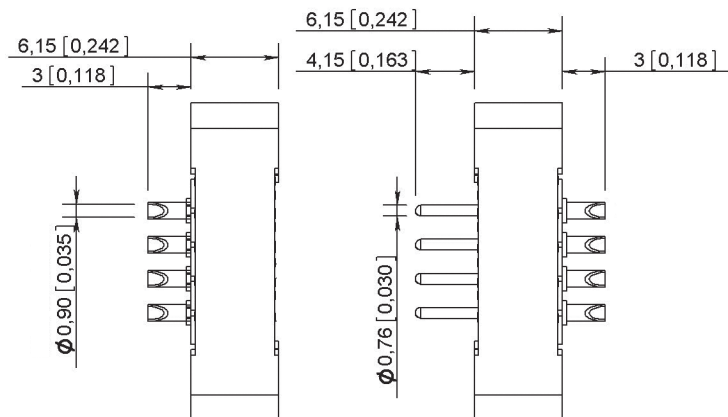


MATING DIMENSIONS

TERMINATION STYLES

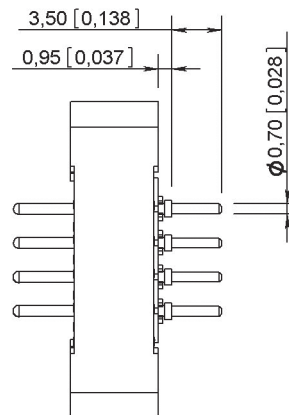
TYPE 20

Solder pot



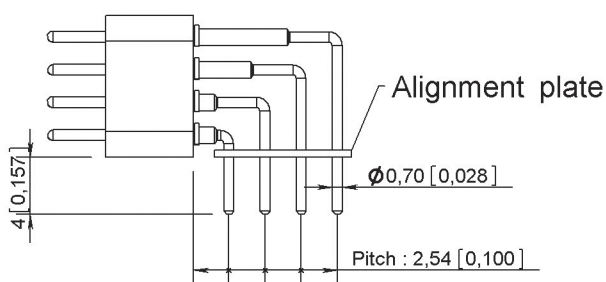
TYPE 21 ^[1]

Straight solder pin for PCB



TYPE 22

Right angle solder pin for PCB

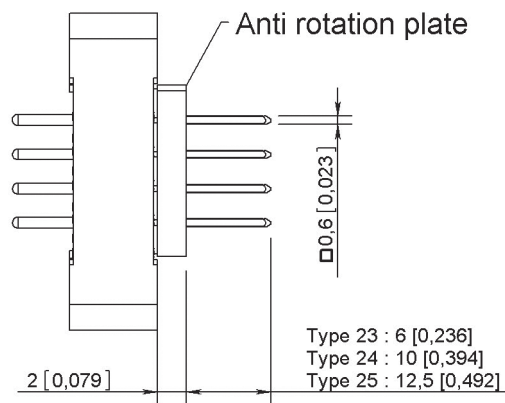


TYPE 23 - 24 - 25

23: Wire wrap termination (1 level)

24: Wire wrap termination (2 level)

25: Wire wrap termination (3 level)



Notes

Dimensions mm (inch)

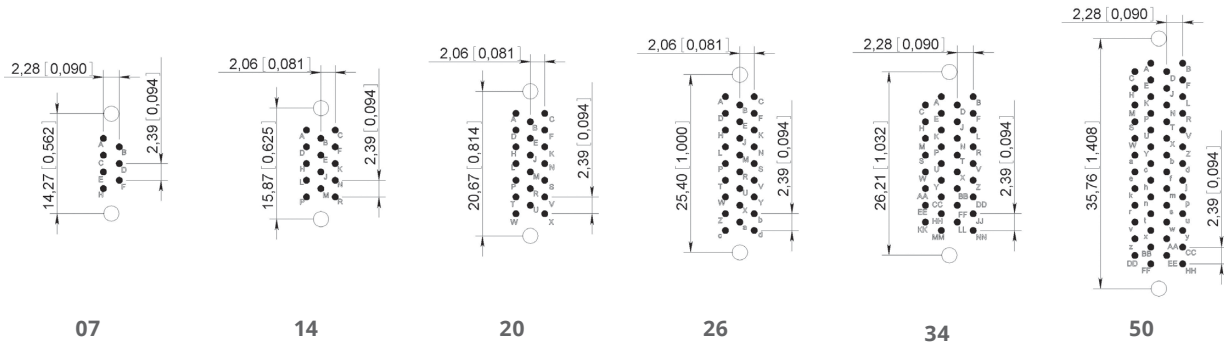
1. For termination style type 21, the connectors are supplied with insulating washers in order to make space between the insulator and the PCB

MM Series

PRINTED CIRCUIT DRILL PATTERN

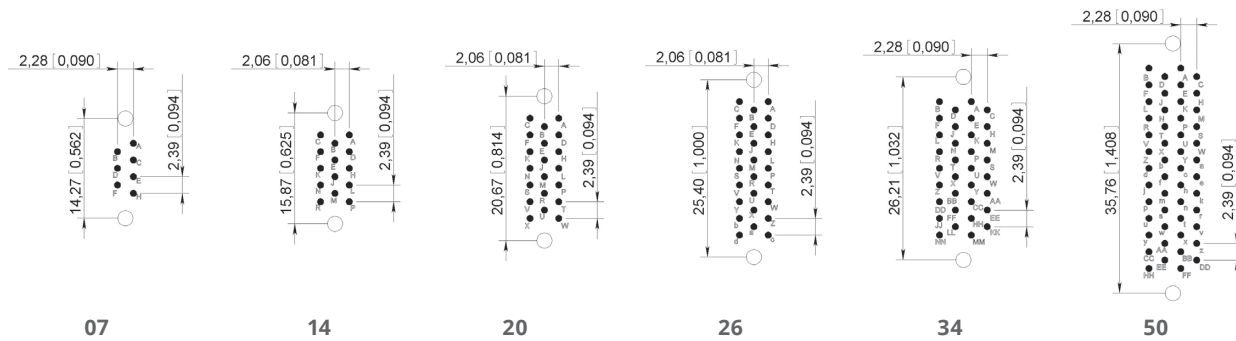
TYPE 21 TERMINATION STYLE - Connector with socket contacts

PCB COMPONENT SIDE VIEW



TYPE 21 TERMINATION STYLE - Connector with pin contacts

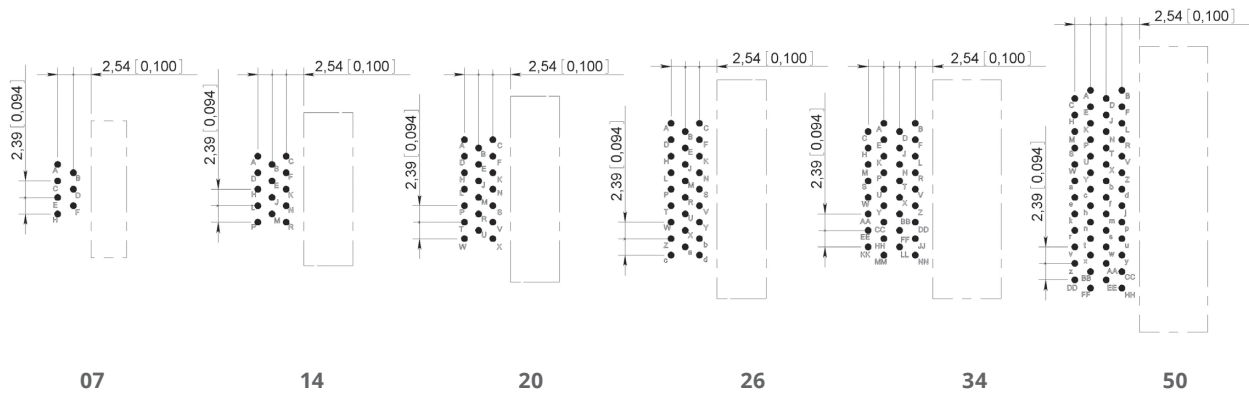
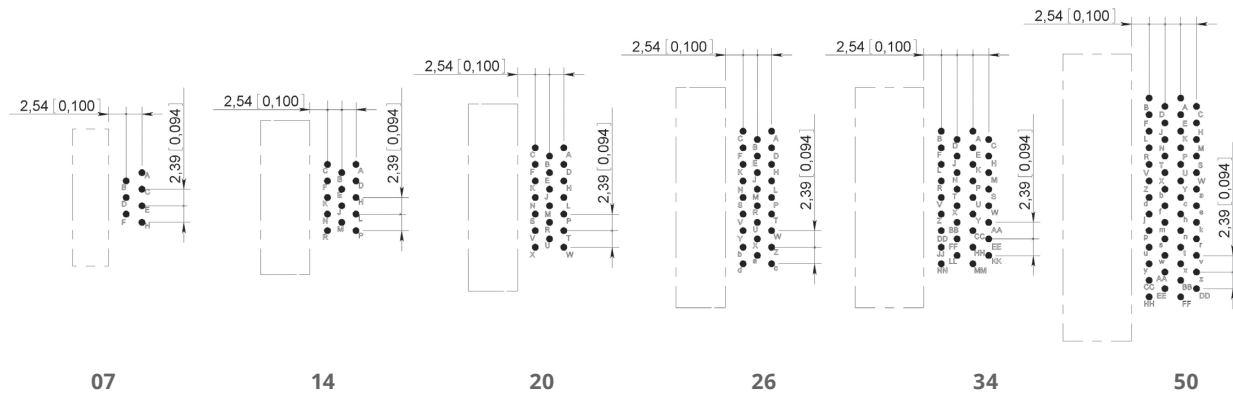
PCB COMPONENT SIDE VIEW



Notes

- Printed circuit drilling $0.8\text{ mm} \pm 0.05$ (0.031 ± 0.002)
- Drilling to fix the connector. Required for guides G3 and GV fixing only
2.2 mm (0.087) for ISO guides and 2.4 mm (0.094) for UNC guides

MM Series

TYPE 22 TERMINATION STYLE - Connector with socket contacts
PCB COMPONENT SIDE VIEW

TYPE 22 TERMINATION STYLE - Connector with pin contacts
PCB COMPONENT SIDE VIEW

Notes:

- Printed circuit drilling $0.8 \text{ mm} \pm 0.05$ (0.031 ± 0.002)

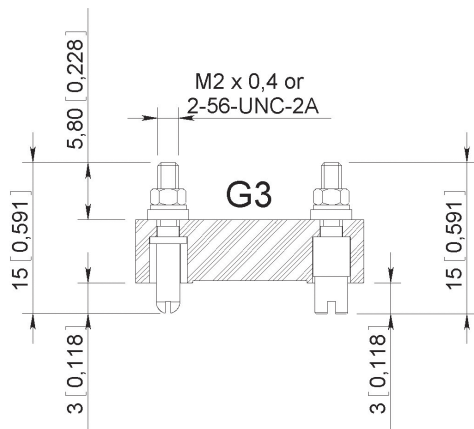
GUIDES & JACKSCREWS

Stainless steel guides and jackscrews are supplied with either ISO (M2 x 0.4) or UNC (2-56 UNC) threads. The guides or jackscrews types (G3 – GV – VL – VR) and the type of thread (ISO or UNC) required are to be defined in the part number on page 10-6.

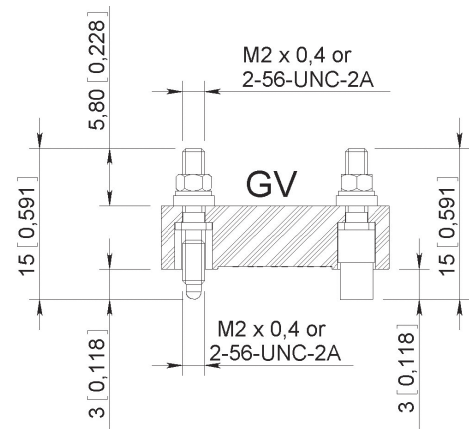
The standard configuration of guides and jackscrews is:

- Male guide (or jackscrew) at the end nearest contact A of the female connector.
- Female guide (or jackscrew) at the end nearest contact A of the male connector.

RACK GUIDES TYPE G3

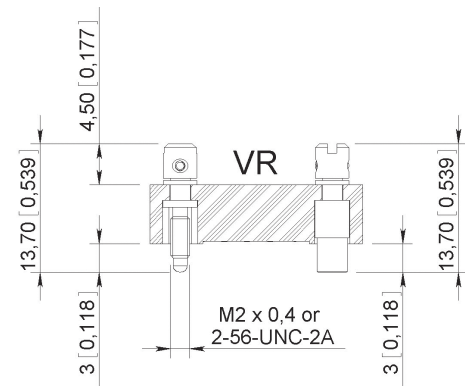
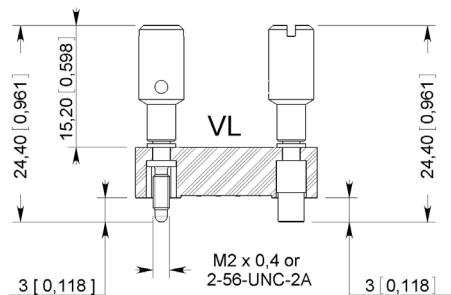


FIXED JACKSCREWS TYPE GV



These guide and jackscrews can be used with backshell HA

LONG AND SHORT ROTATING JACKSCREWS TYPE VL – VR



Mating torque: 0.2 Nm

Not available for termination style type 22

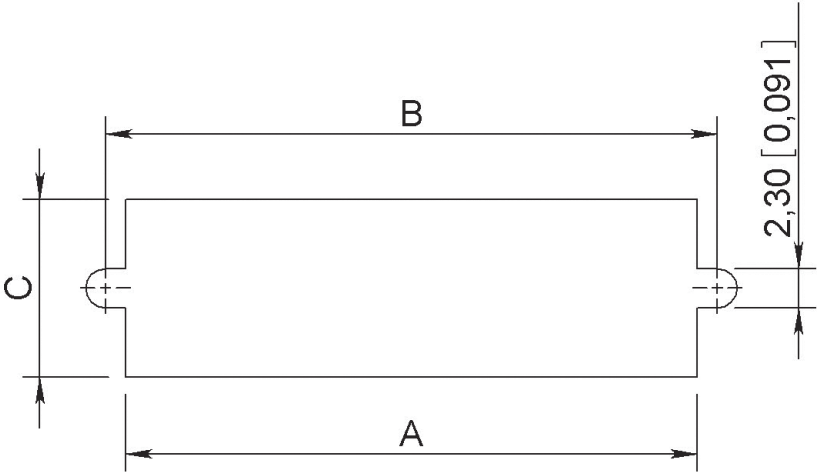
Cannot be used with any backshell

Mating torque: 0.2 Nm

Cannot be used with any backshell

PANEL CUT-OUT

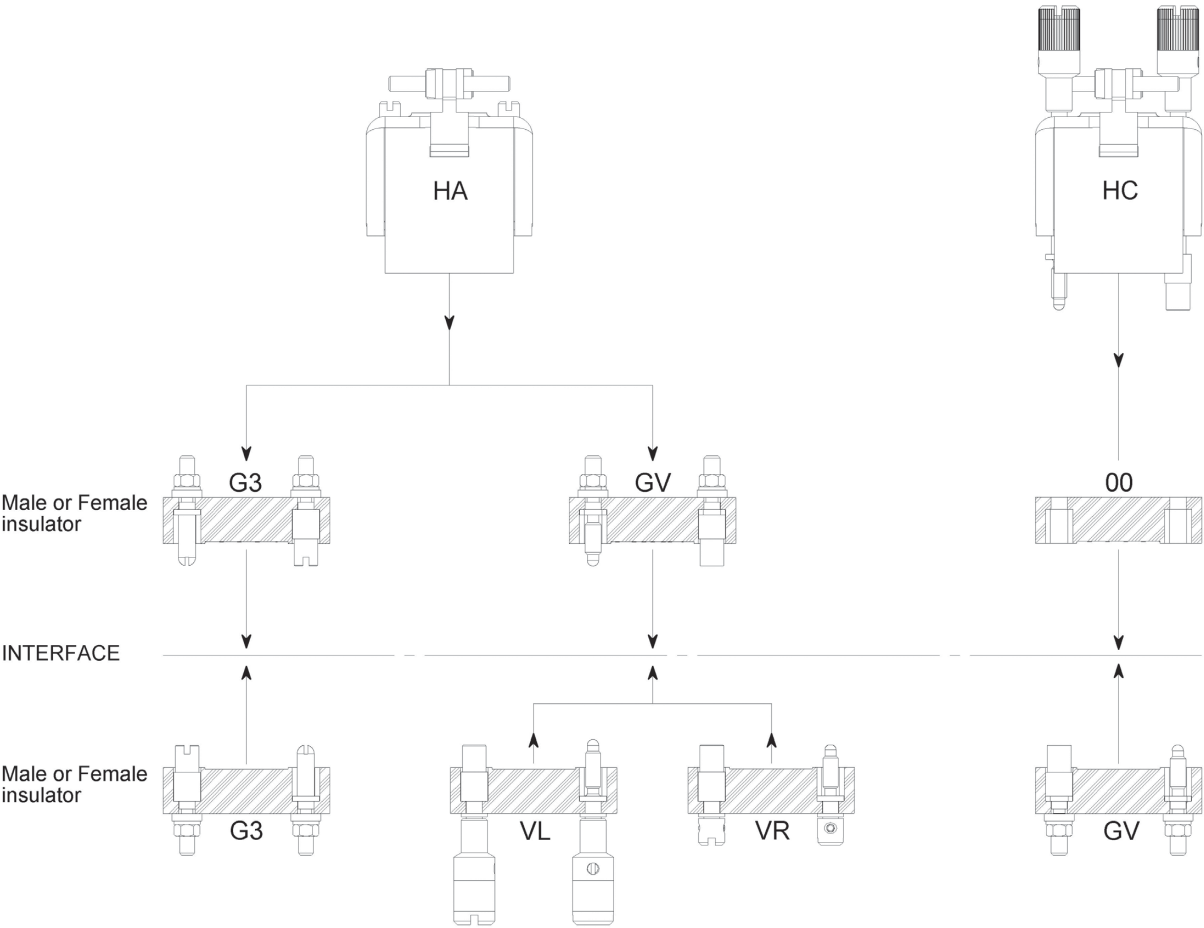
CONTACT ARRANGEMENT	DIMENSIONS MM (INCH)		
	A	B	C
07	11.9 (0.468)	14.27 (0.562)	5.8 (0.228)
14	13.5 (0.531)	15.87 (0.625)	7.6 (0.299)
20	18.3 (0.720)	20.67 (0.814)	
26	23 (0.905)	25.4 (1)	
34	23.9 (0.940)	26.2 (1.031)	10.4 (0.409)
50	33.4 (1.315)	35.76 (1.408)	



CONNECTOR MATING COMPATIBILITY

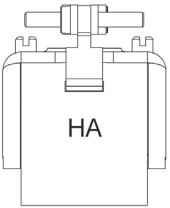
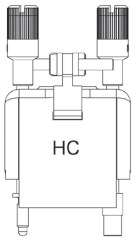
TERMINATION STYLE TYPE 20 ONLY – Use with backshell

BACKSHELL TYPE



Use without backshell – All termination style type

BACKSHELL TYPE AVAILABILITY

THREAD		HOOD		THREAD	
NC (2-56 UNC)	ISO (M2 X 0.4)	 HA	 HC	ISO (M2 X 0.4)	NC (2-56 UNC)
07	07			07	07
14	14			14	14
20	20			20	20
26	26			26	26
34	34			34	34
50	50			50	50

Fixing of hoods only suitable for insulator with termination style type 20 (solder pot)

MM Series

TOP ENTRY BACKSHELLS

TYPE HA

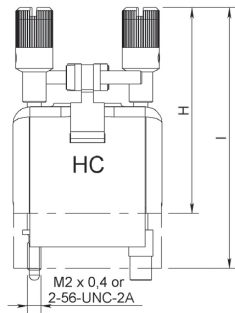
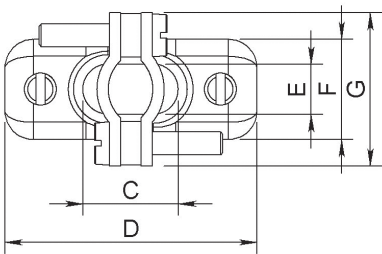
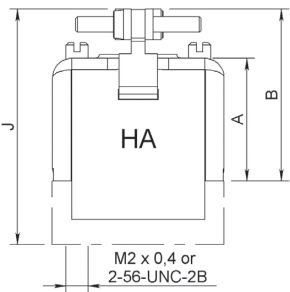
Backshells supplied with two internal threaded posts which are screwed into the guides G3 or jackscrews GV.

TYPE HC

Backshells supplied with two long rotating jackscrews. These backshells are mounted on connectors without guides or jackscrews (code 00).

PART NUMBERS

CONTACTS ARRANGEMENTS	TYPE HA		TYPE HC	
	WITH THREADS M2 X 0.4	WITH THREADS 2-56 UNC	WITH SCREWS M2 X 0.4	WITH SCREWS 2-56 UNC
07	MM07HAIS	MM07HANC	MM07HCIS	MM07HCNC
14	MM14HAIS	MM14HANC	MM14HCIS	MM14HCNC
20	MM20HAIS	MM20HANC	MM20HCIS	MM20HCNC
26	MM26HAIS	MM26HANC	MM26HCIS	MM26HCNC
34	MM34HAIS	MM34HANC	MM34HCIS	MM34HCNC
50	MM50HAIS	MM50HANC	MM50HCIS	MM50HCNC



MATING TORQUE: 0.15 NM

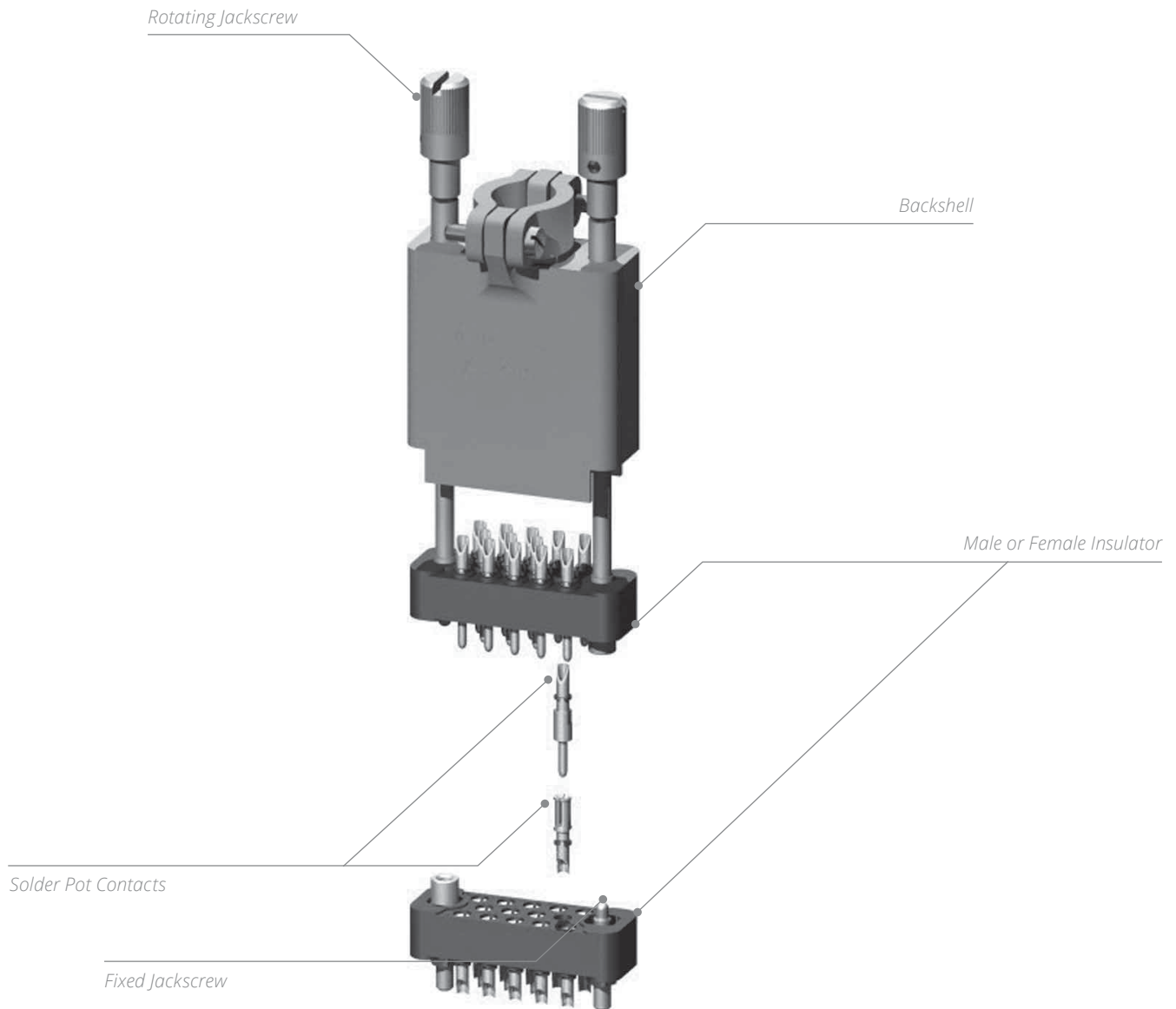
CONTACT ARRANGEMENT	A	B	C	D	E	F	G	H	I	J
07	15.9 (0,626)	23.15 (0.911)	5.5 (0.216)	19.8 (0.779)	4 (0.157)	6.8 (0.268)	13.5 (0.531)	31.9 (1.256)	38.2 (1.504)	29.4 (1.157)
14			10 (0.394)	22.2 (0.874)	6 (0.236)	8.8 (0.346)				
20			14 (0.551)	27 (1.063)						
26			19 (0.748)	31.8 (1.252)	9.5 (0.374)	11.8 (0.464)	15.7 (0.618)			30.4 (1.197)
34										
50	30.5 (1.201)	38.5 (1.516)	29.7 (1.169)	41.4 (1.630)				46.6 (1.835)	52.9 (2.083)	44.8 (1.764)

Notes:

Dimensions mm (inch)
Fixing of backshells only suitable for insulator with termination style type 20 (solder pot).

*MB Series***PRODUCT OVERVIEW**

Detailed view of the various parts of the MB series connector.



TECHNICAL CHARACTERISTICS

ELECTRICAL

Conforms to MIL-C-28748 performance requirements standard.

- Current Rating: 7.5A
- Test Voltage at Sea Level: 1,500 Vrms/50 Hz
- Operating Voltage at Sea Level: 500 Vrms/50 Hz
- Insulation Resistance: > 5,000 MΩ
- Contact Resistance: < 5 mΩ

MECHANICAL & ENVIRONMENTAL

- Temperature Range: -55 °C (-131 °F) to 125 °C (257 °F)
- Durability: 500 Mating Cycles
- Shock: 50g/11ms
- Vibration: 20 g/10-2,000 Hz
- Humidity: 21 Days
- Contact Insertion Force: 3 N
- Salt Spray: 48 Hours

MATERIALS

DESCRIPTION	MATERIAL	FINISH
Insulator	Glass Filled Diallylphthalate Conform to MIL-M-14SDG-F	-
Pin Contact	Copper Alloy	Gold over Nickel
Socket Contact	Copper Alloy	Gold over Nickel
Guides & Jackscrews	Stainless Steel	-
Backshells	Aluminium Alloy	Yellow Anodized
Spring Lever Clamps	Stainless Steel	-
Potting Moulds	Nylon	-

MASSES G (OZ)

WEIGHT OF CONNECTORS MATED

CONTACT ARRANGEMENT	02	03	05	07	11	14	20	26	34	42	50	75
Without Guides	2.2 (0.07)	2.30 (0.81)	4 (0.14)	3.7 (0.13)	5.6 (0.20)	6.4 (0.23)	8.6 (0.30)	11 (0.39)	15.2 (0.54)	17.6 (0.62)	20.5 (0.72)	32.7 (1.15)
With Rack Guides	3.9 (0.14)	4 (0.14)	4.7 (0.17)	5.4 (0.19)	7.3 (0.26)	8.1 (0.29)	10.3 (0.36)	12.7 (0.45)	16.9 (0.60)	19.3 (0.68)	22.2 (0.78)	36.2 (1.28)
With Backshells & Jackscrew	-	-	-	12.4 (0.44)	17.5 (0.62)	20.4 (0.72)	28 (0.99)	31.5 (1.11)	37.2 (1.31)	-	45.2 (1.59)	62 (2.19)

HOW TO ORDER CONNECTORS

MM

SERIES

MB SERIES

Contact arrangement (refer to page 10-18)

02: 03 : 05 : 07 - 11 - 14

20: 26 : 34 : 42 - 50 - 75

CONTACT TYPE

M: Pin

F: Socket

TERMINATION STYLE (REFER TO PAGE 10-19)

85: Solder pot

86: Straight solder pin for PCB

87: Right angle solder pin for PCB

GUIDES AND JACKSCREWS (REFER TO PAGE 10-25)

00: Without guides and jackscrews ^[1]

G1: Rack guides ^[2]

GV: Fixed jackscrews ^[2]

VR: Short rotating jackscrews

VL: Long rotating jackscrews ^[3]

SHIPMENT WITHOUT BACKSHELL AND ACCESSORIES

THREAD, GUIDES OR JACKSCREWS

00: Without guides and jackscrews

IS: ISO (M2 x 0.4)

NC: 2-56 UNC

Notes:

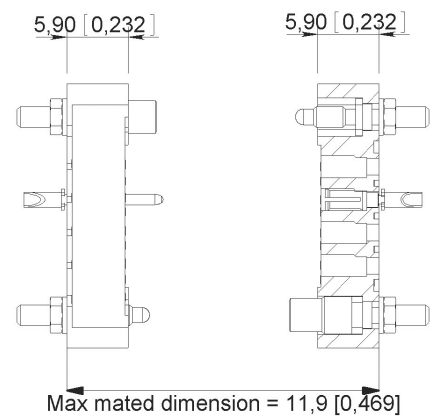
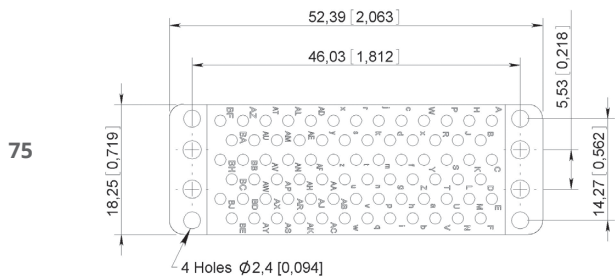
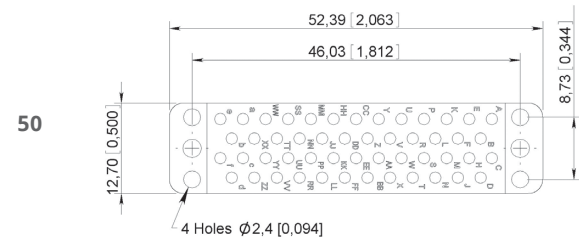
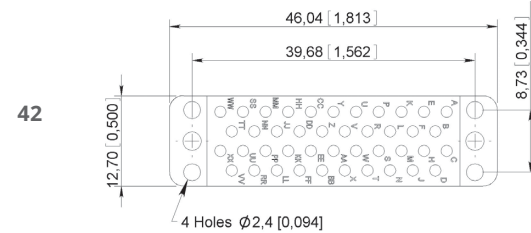
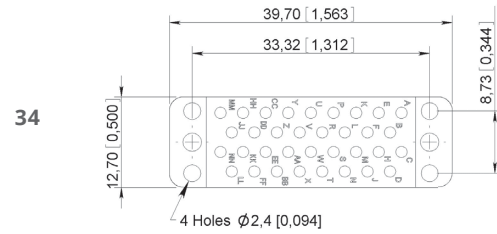
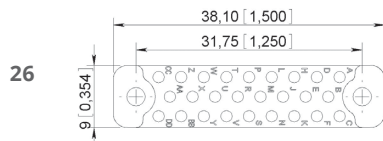
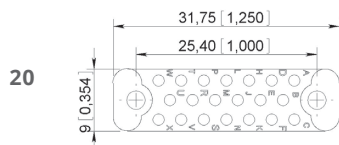
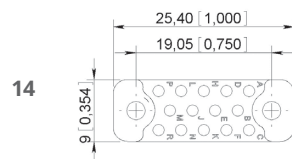
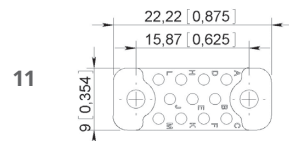
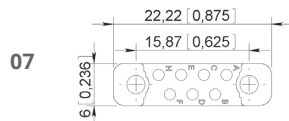
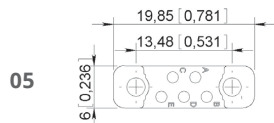
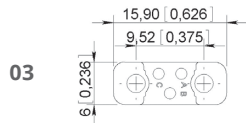
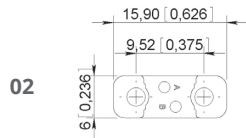
1. Connectors to be used with backshell HC and HV (see page 10-26) or rack guides G1

2. Connectors to be used with backshell HA and HL (see page 10-26)

A spring clip locking system can be fitted (see page 10-30)

3. VL jackscrews assembly is only available for termination style type 85

CONTACT ARRANGEMENTS



MATING DIMENSIONS

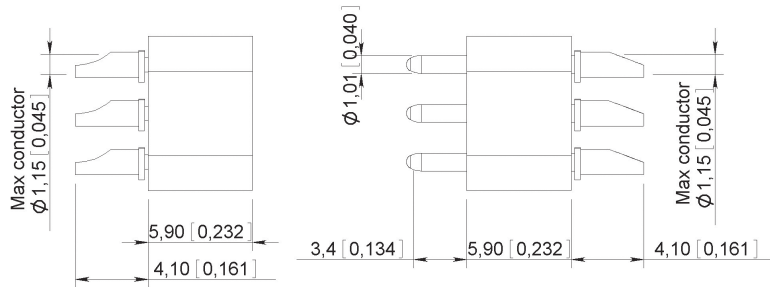
MB Series

TERMINATION STYLES

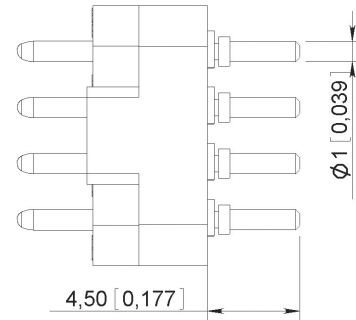
All contacts arrangement and termination style have contacts stopped in rotation (except contact arrangements 42, 50 and 75 for these please contact us).

TYPE 85

Solder pot

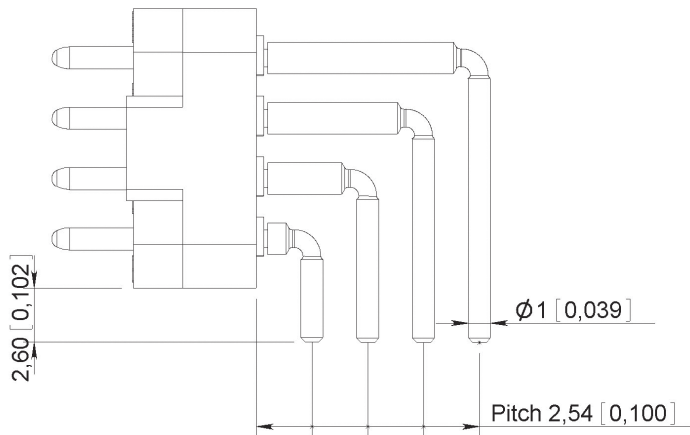
TYPE 86 ^[1]

Straight solder pin for PCB



TYPE 87

Right angle solder pin for PCB



Notes

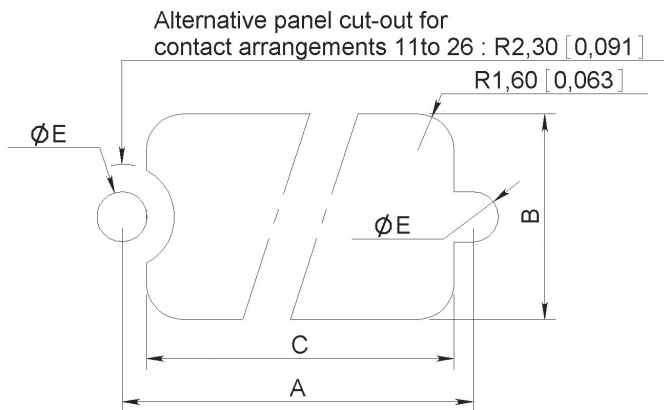
Dimensions mm (inch)

1. The connectors are supplied with insulating washers which act as spacers between the insulator and the PCB

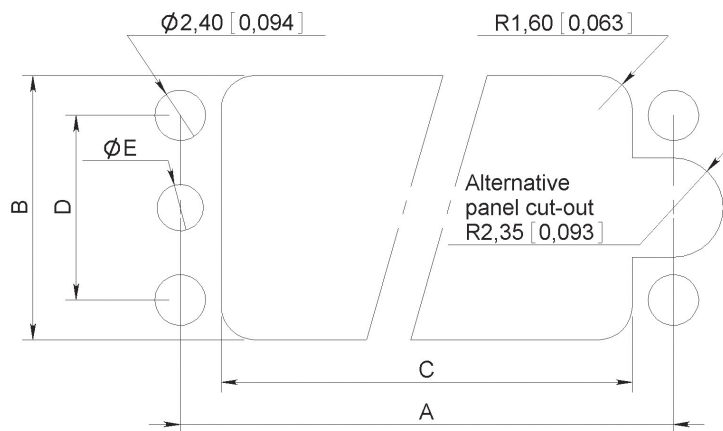
PANEL CUT-OUT

DIMENSIONS												
	02	03	05	07	11	14	20	26	34	42	50	75
A	9.52 (0.375)	9.52 (0.375)	13.48 (0.531)	15.87 (0.625)	15.87 (0.625)	19.05 (0.750)	25.4 (1)	31.75 (1.250)	33.34 (1.313)	39.68 (1.562)	46.03 (1.812)	46.03 (1.812)
B	6 (0.236)	6 (0.236)	6 (0.236)	6 (0.236)	9 (0.354)	9 (0.354)	9 (0.354)	9 (0.354)	12.5 (0.500)	12.5 (0.500)	12.5 (0.500)	18.28 (0.720)
C	7.2 (0.283)	7.2 (0.283)	11 (0.433)	13.5 (0.531)	13.5 (0.531)	17 (0.669)	23.5 (0.925)	29.5 (1.161)	29.46 (1.160)	35.81 (1.410)	42.16 (1.660)	42.16 (1.660)
D	-	-	-	-	-	-	-	-	8.73 (0.344)	8.73 (0.344)	8.73 (0.344)	14.27 (0.562)
ØE (ISO)	2.2 (0.087)	2.2 (0.087)	2.2 (0.087)	2.2 (0.087)	2.2 (0.087)	2.2 (0.087)	2.2 (0.087)	2.2 (0.087)	2.2 (0.087)	2.2 (0.087)	2.2 (0.087)	2.2 (0.087)
ØE (NC)	2.4 (0.094)	2.4 (0.094)	2.4 (0.094)	2.4 (0.094)	2.4 (0.094)	2.4 (0.094)	2.4 (0.094)	2.4 (0.094)	2.4 (0.094)	2.4 (0.094)	2.4 (0.094)	2.4 (0.094)

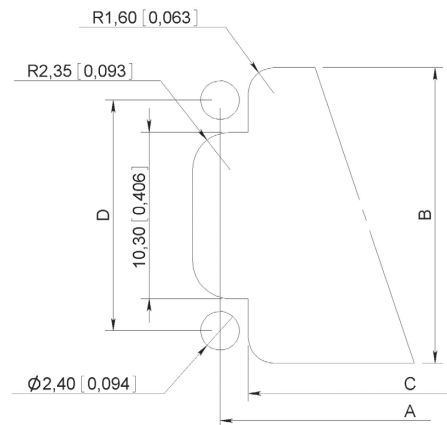
CONTACT ARRANGEMENTS 02 - 03 - 05 - 07 - 11 - 14 - 20 - 26



CONTACT ARRANGEMENTS 34 - 42 - 50



CONTACT ARRANGEMENT 75

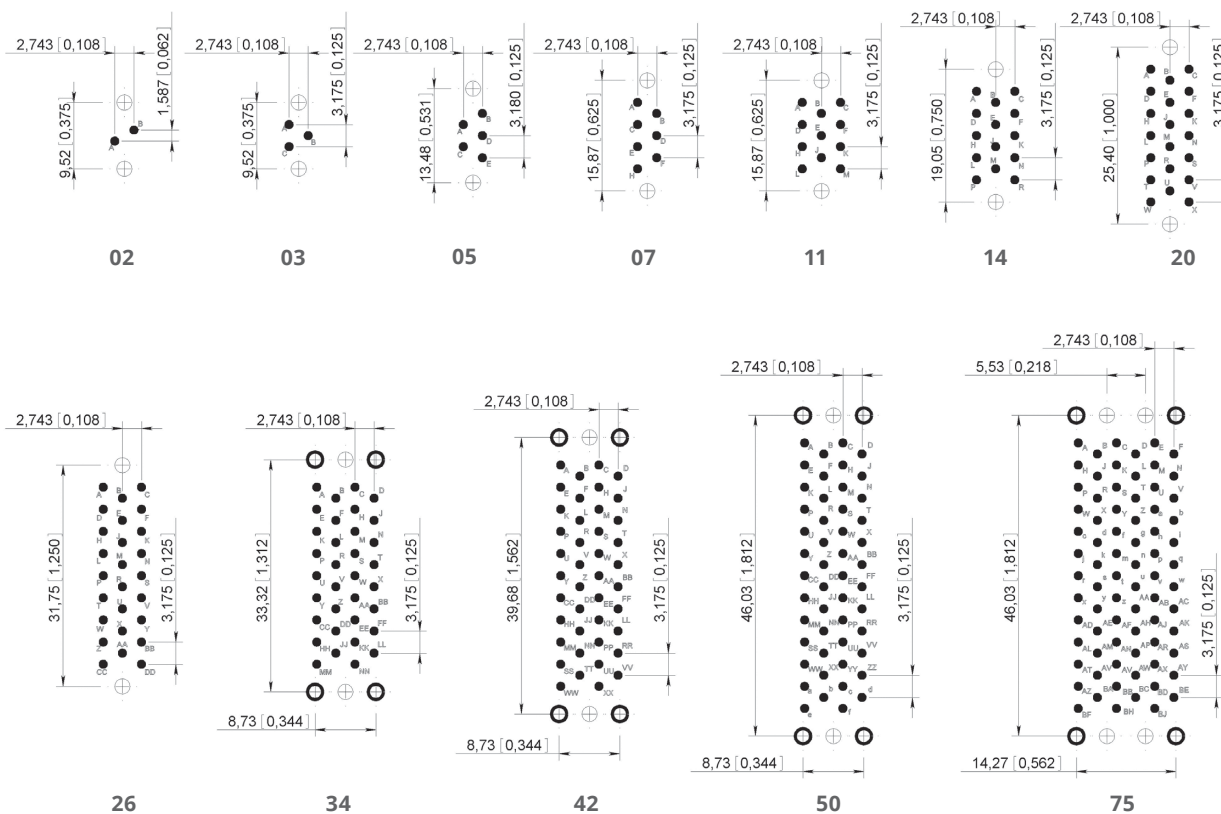


Notes

Dimensions mm (inch)

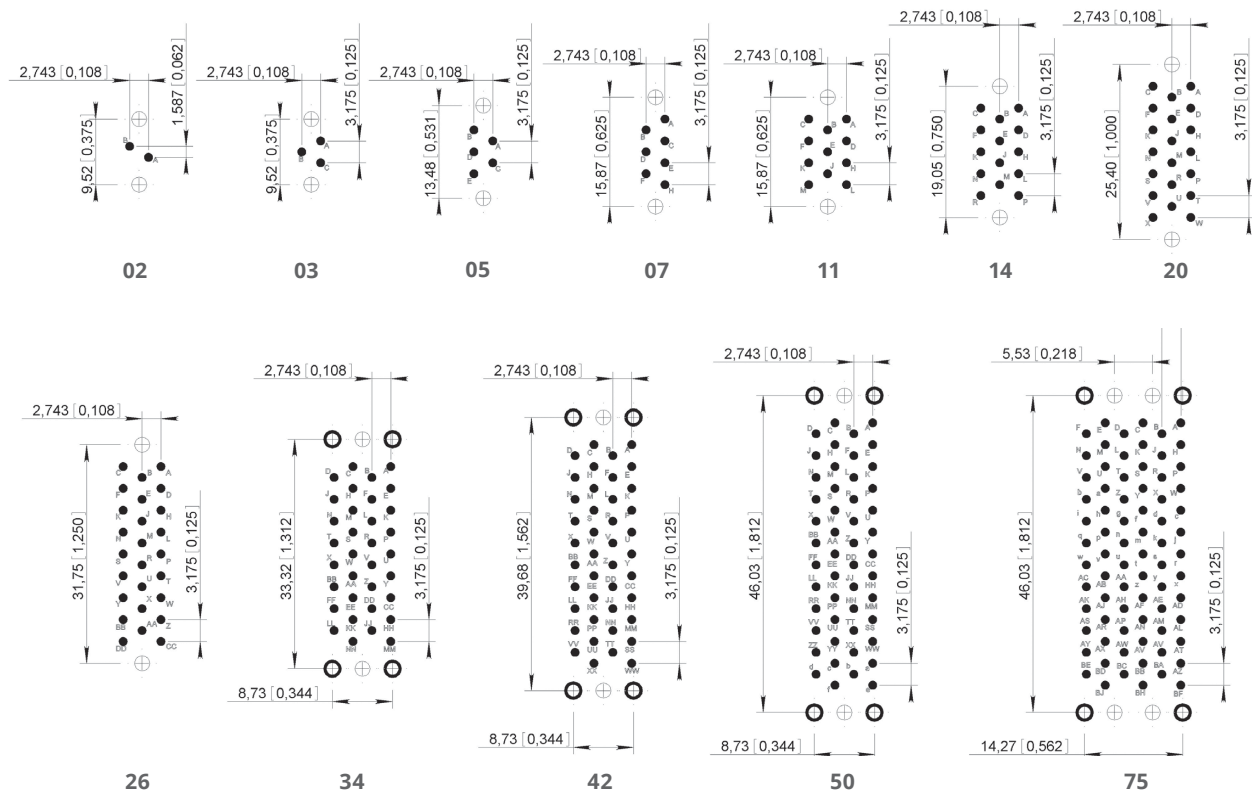
PRINTED CIRCUIT DRILL PATTERN

TYPE 86 TERMINATION STYLE - Connector with SOCKET contacts – PCB component side view in mm (inch)



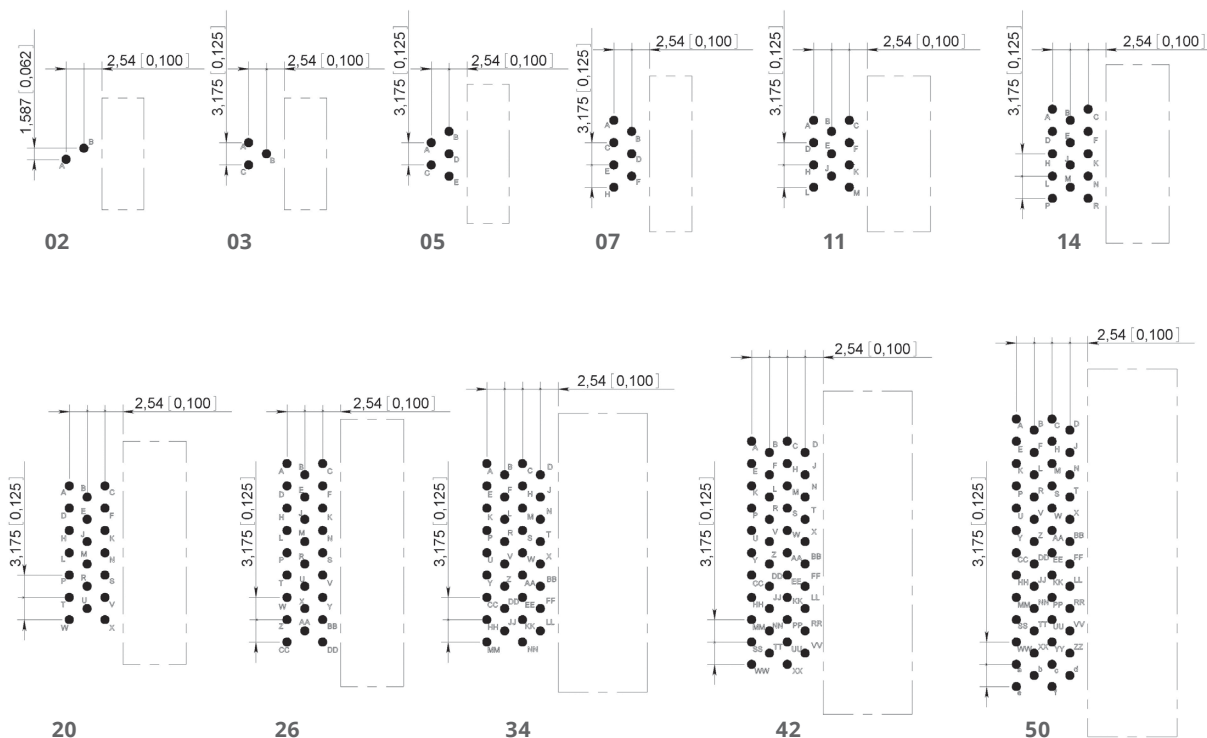
Notes:

- Printed circuit drilling $\varnothing 1.1 +0.1 (0.043 +0.003)$
- Drilling to fix the connector $\varnothing 2.4 (0.094)$
- ⊕ Drilling to fix the connector. Required for guides G1 and GV fixing only:
 2.2 (0.087) \varnothing for ISO guides
 2.4 (0.094) \varnothing for UNC guides

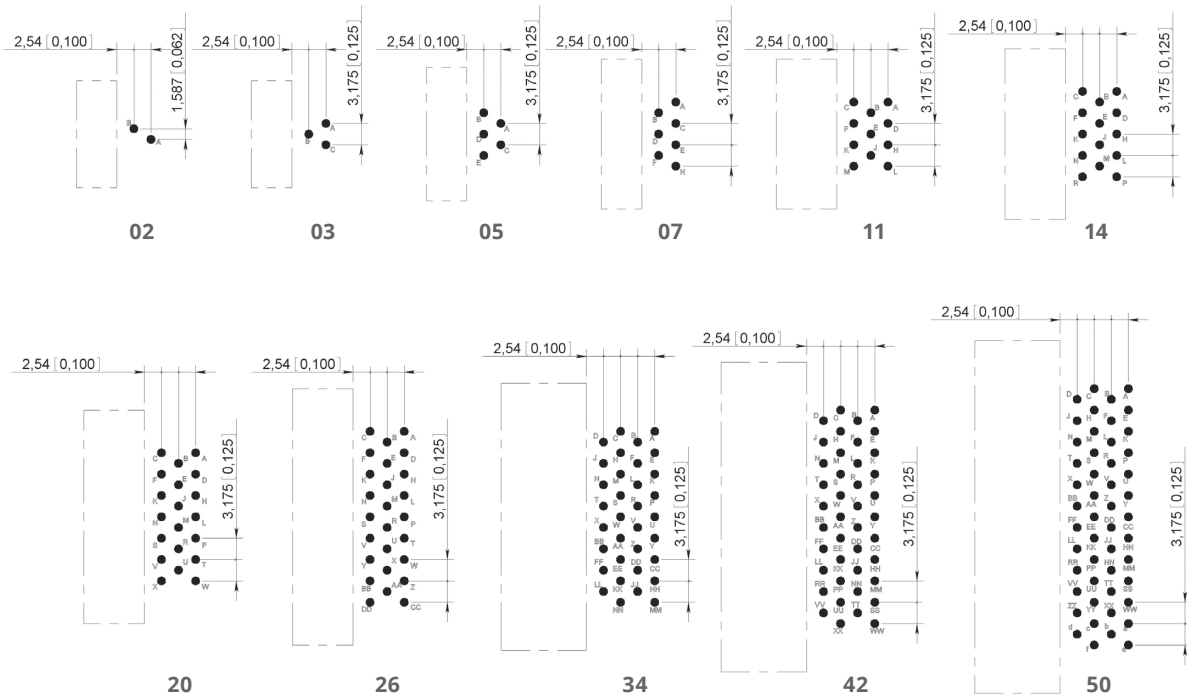
TYPE 86 TERMINATION STYLE - Connector with PIN contacts – PCB component side view in mm (inch)**Notes:**

- Printed circuit drilling $\varnothing 1.1 +0.1 (0.043 +0.003)$
- Drilling to fix the connector $\varnothing 2.4 (0.094)$
- ⊕ Drilling to fix the connector. Required for guides G1 and GV fixing only:
 2.2 (0.087) \varnothing for ISO guides
 2.4 (0.094) \varnothing for UNC guides

MB Series

TYPE 87 TERMINATION STYLE - Connector with SOCKET contacts – PCB component side view in mm (inch)**Notes:**

- Printed circuit drilling $\varnothing 1.1 +0.1$ ($0.043 +0.003$)

TYPE 87 TERMINATION STYLE - Connector with PIN contacts – PCB component side view in mm (inch)**Notes:**

• Printed circuit drilling $\varnothing 1.1 \pm 0.1$ (0.043 \pm 0.003)

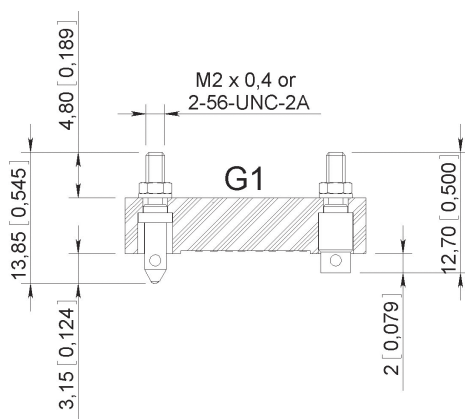
GUIDES & JACKSCREWS

Stainless steel guides and jackscrews are supplied with either ISO (M2 x 0.4) or UNC (2-56 UNC) threads. The guides or jackscrews types G1 – GV – VL and VR and type of thread (ISO or UNC) required are to be defined in the part number on page 10-17.

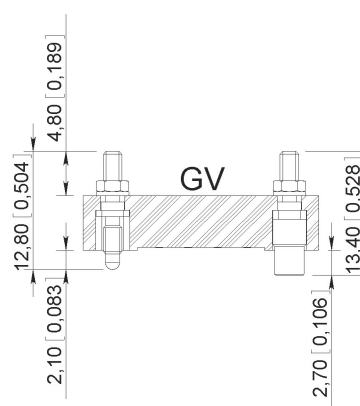
The standard configuration of guides and jackscrews is:

- Male guide (or jackscrew) at the end nearest contact A of the female connector.
- Female guide (or jackscrew) at the end nearest contact A of the male connector.

RACK GUIDES TYPE G1



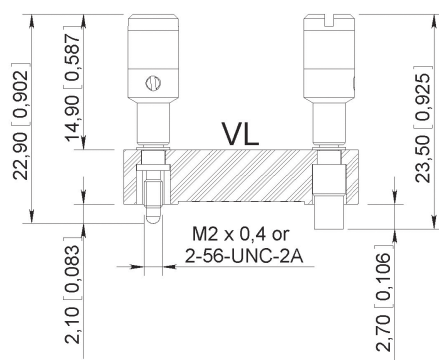
FIXED JACKSCREWS TYPE GV



The 2,3, 5 and 7 way GV jackscrews are held securely in place by two flats on the jackscrews whereas the jackscrews for the other contact arrangements have a square section to avoid rotation.

These guide and jackscrews can be used with backshells HA and HL

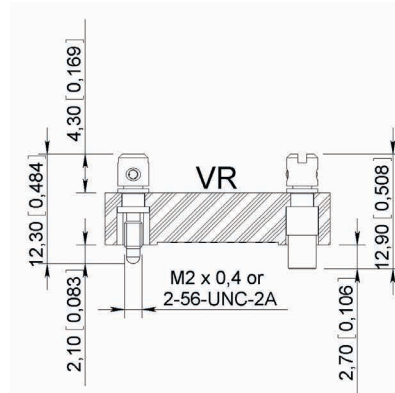
LONG AND SHORT ROTATING JACKSCREWS TYPE VL – VR



Mating torque: 0.2 Nm

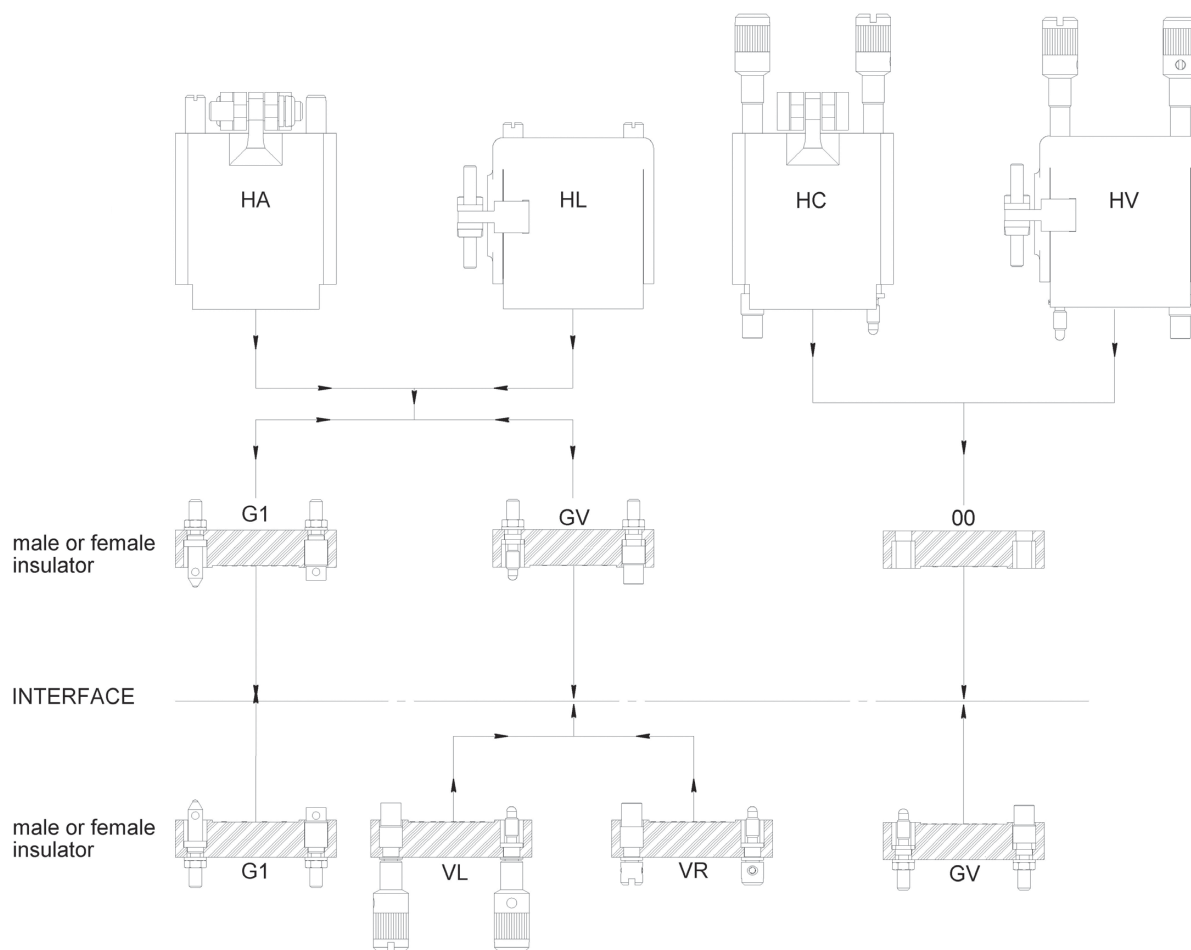
Not available for termination style type 87

Cannot be used with backshell



Mating torque: 0.2 Nm

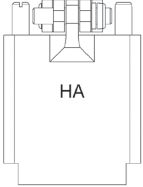
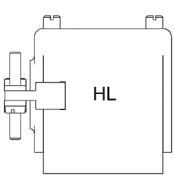
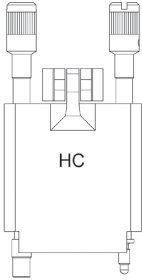
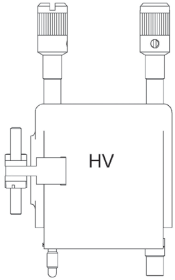
Cannot be used with backshell

CONNECTOR MATING COMPATIBILITY**TERMINATION STYLE TYPE 85 ONLY – Use with backshell**

Use without backshell – All termination style type

MB Series

BACKSHELL TYPE AVAILABILITY

THREAD		BACKSHELL		THREAD	
NC (2-56 UNC)	ISO (M2 x 0.4)			ISO (M2 x 0.4)	NC (2-56 UNC)
07	07			-	-
11	11			11	11
14	14			14	14
20	20			-	-
26	26			26	26
34	34			34	34
50	50			50	50
75	75			-	75 (1)
07	07			-	-
11	11			11	11
14	14			14	14
20	20			-	-
26	26			26	26
34	34			34	34
50	50			50	50
75	75			-	75 (1)

Fixing of backshells only suitable for insulator with termination style type 85 (solder pot)

Notes

1. Available for male contact arrangement only

MB Series

TOP ENTRY BACKSHELLS

TYPE HA

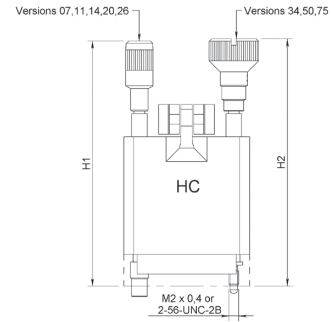
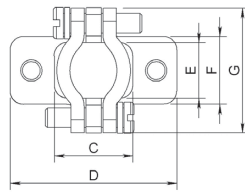
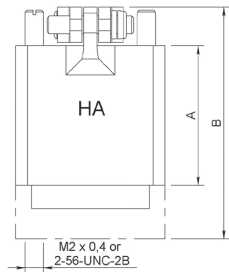
Backshells supplied with two internal threaded posts which are screwed into the guides G1 or jackscrews GV.

TYPE HC

Backshells supplied with two long rotating jackscrews. These backshells are mounted on connectors without guides or jackscrews.

PART NUMBERS

CONTACTS ARRANGEMENTS	TYPE HA		TYPE HC	
	WITH THREADS M2 X 0.4	WITH THREADS 2-56 UNC	WITH SCREWS M2 X 0.4	WITH SCREWS 2-56 UNC
07	MB07HAIS2	MB07HANC	MB07HCIS	MB07HCNC
11	MB11HAIS2	MB11HANC	MB11HCIS	MB11HCNC
14	MB14HAIS2	MB14HANC	MB14HCIS	MB14HCNC
20	MB20HAIS2	MB20HANC	MB20HCIS	MB20HCNC
26	MB26HAIS2	MB26HANC	MB26HCIS	MB26HCNC
34	MB34HAIS2	MB34HANC	MB34HCIS	MB34HCNC
50	MB50HAIS2	MB50HANC	MB50HCIS	MB50HCNC
75	MB75HAIS2	MB75HANC	MB75HCIS	MB75HCNC



MATING TORQUE: 0.15 NM

CONTACTS ARRANGEMENTS ^[1]	A	B	C	D	E	F	G	H1	H2 ^[2]
07	9.52 (0.375)	22.9 (0.902)	9.13 (0.359)	22.2 (0.874)	5.95 (0.234)	7.5 (0.295)	13.5 (0.531)	30.62 (1.205)	N/A
11	23.8 (0.937)	37.2 (1.465)	11.9 (0.468)	25.4 (1)	8.7 (0.342)	10.3 (0.405)	15.87 (0.625)	48.8 (1.921)	N/A
14			12.7 (0.500)				23.8 (0.937)	55.2 (2.173)	N/A
20	30.16 (1.187)	48.4 (1.905)	18.26 (0.719)	31.7 (1.248)	12.7 (0.500)	26.98 (1.062)			N/A
26			23 (0.905)	38.1 (1.500)		26.98 (1.062)	N/A	N/A	
34			20.6 (0.811)	39.7 (1.563)			N/A	55.6 (2.189)	
50			22.2 (0.874)	52.4 (2.063)					N/A
75			23 (0.905)	18.2 (0.716)	19.8 (0.779)	34.52 (1.359)	N/A		

Notes

Dimensions mm (inch)

- Fixing of backshells only suitable for insulator with termination style type 85 (solder pot)
- Backshells 34, 50 and 75 are fitted with 4 screws to be fixed to the connector block

MB Series

SIDE ENTRY BACKSHELLS

TYPE HA

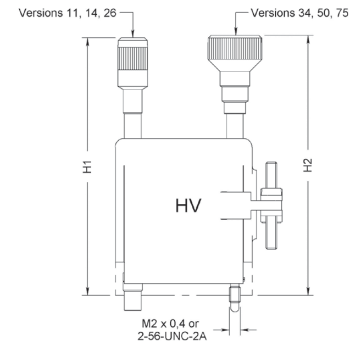
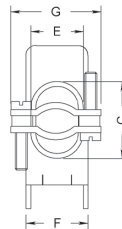
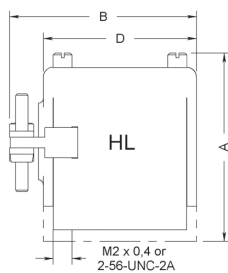
Backshells supplied with two internal threaded posts which are screwed into the guides G1 or jackscrews GV.

TYPE HC

Backshells supplied with two long rotating jackscrews. These backshells are mounted on connectors without guides or jackscrews.

PART NUMBERS

CONTACTS ARRANGEMENTS	TYPE HA		TYPE HC	
	WITH THREADS M2 X 0.4	WITH THREADS 2-56 UNC	WITH SCREWS M2 X 0.4	WITH SCREWS 2-56 UNC
11	MB11HLIS2	MB11HLNC	MB11HVIS	MB11HVNC
14	MB14HLIS2	MB14HLNC	MB14HVIS	MB14HVNC
26	MB26HLIS2	MB26HLNC	MB26HVIS	MB26HVNC
34	MB34HLIS2	MB34HLNC	MB34HVIS	MB34HVNC
50	MB50HLIS2	MB50HLNC	MB50HVIS	MB50HVNC
75	-	MB75HLNC ^[1]	-	MB75HVNC ^[1]



MATING TORQUE: 0.15 NM

CONTACTS ARRANGEMENTS ^[2]	A	B	C	D	E	F	G	H1	H2 ^[3]
11	31.7 (1.248)	29.8 (1.173)	11.9 (0.469)	22.2 (0.874)	8.7 (0.343)	10.3 (0.406)	15.87 (0.625)	48.8 (1.921)	N/A
14		32.9 (1.295)	12.7 (0.500)	25.4 (1)					N/A
26	37.7 (1.484)	49.2 (1.937)	23 (0.906)	38.1 (1.500)	8.72 (0.343)	14.3 (0.563)	23.8 (0.937)	N/A	N/A
34		51.6 (2.031)	20.6 (0.811)	39.7 (1.563)	12.7 (0.500)		26.98 (1.062)		N/A
50		64.3 (2.531)	22.2 (0.874)	52.4 (2.063)		19.8 (0.780)			N/A
75		65.5 (2.579)	23 (0.906)	52.4 (2.063)	18.2 (0.717)	34.52 (1.359)	N/A	49.2 (1.937)	

Notes

Dimensions mm (inch)

1. Available for male contact arrangement only

2. Fixing of backshells only suitable for insulator with termination style type 85 (solder pot)

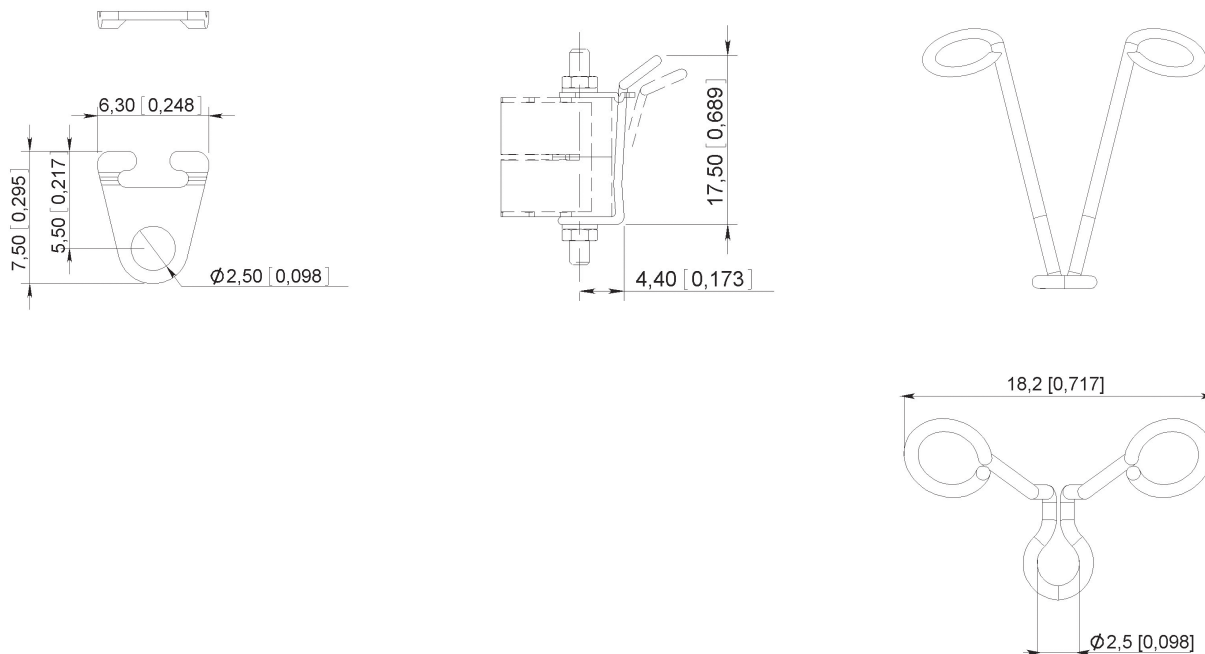
3. Backshells 34, 50 and 75 are fitted with 4 screws to be fixed to the connector block

ACCESSORIES

SPRING LOCKING SYSTEM

This simple locking system avoids accidental disconnection of connectors fitted to equipment which may be subjected to severe vibration. This system can be used where connector fitted with G1 guides are used with or without backshell.

Part number of a pair: 624895



POTTING MOULDS

The plastic potting moulds are designed to fit onto the wiring side of the connectors in order so that the wiring and back end can be encapsulated. They can be used with connectors fitted with G1 guides and GV and VR jackscrews.

CONTACTS ARRANGEMENTS	PART NUMBERS	TYPE HA	
		A	B
02 -03	624994	5.9 (0.232)	9.5 (0.374)
05	624992	5.9 (0.232)	13.5 (0.531)
07	624991	5.9 (0.232)	15.9 (0.626)
11	624993	9 (0.354)	15.9 (0.626)
14	624995	9 (0.354)	19 (0.748)

