

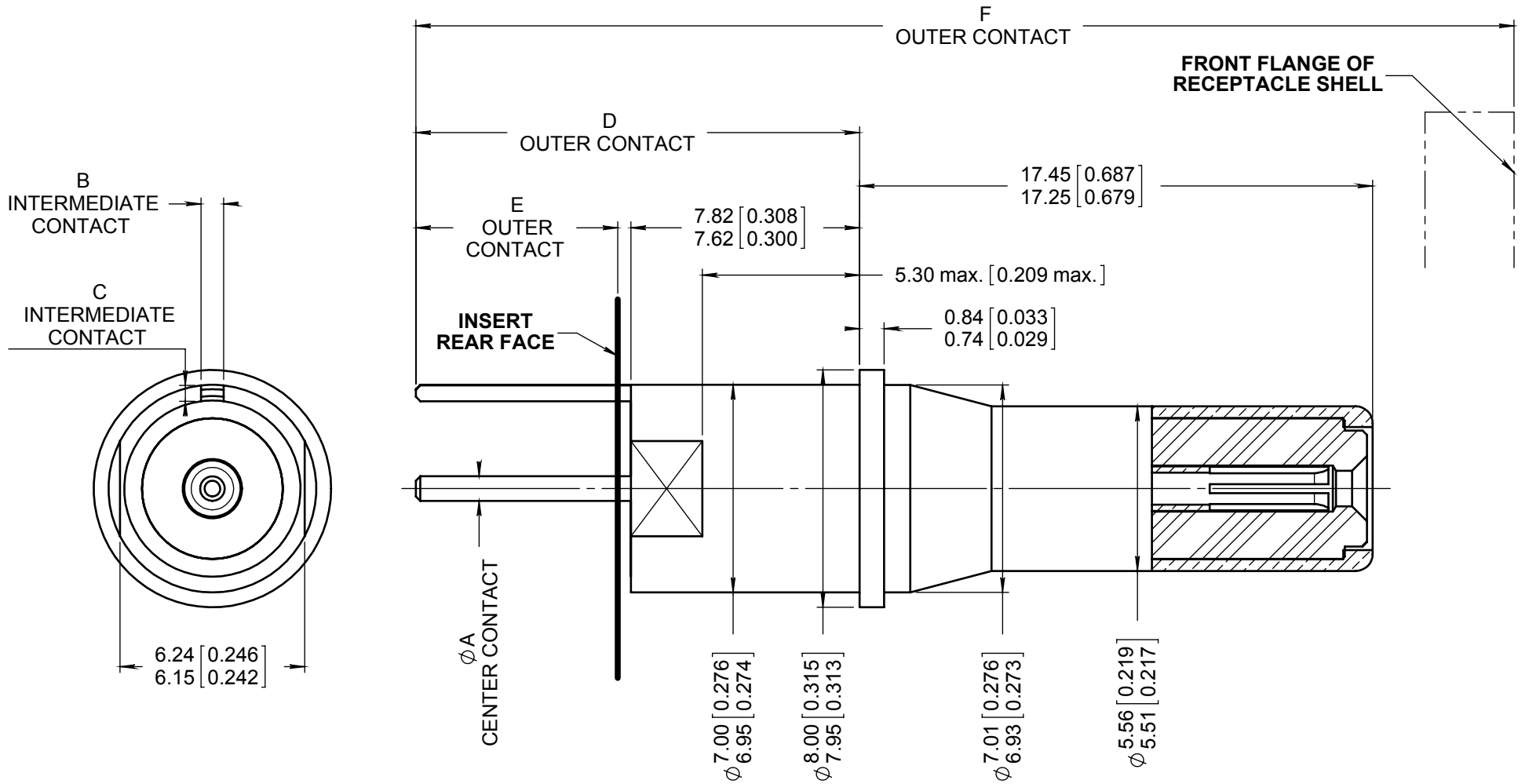
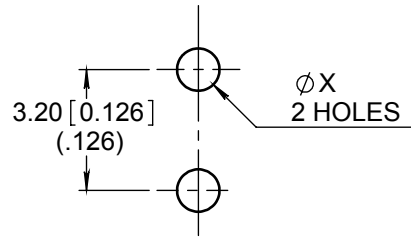
Series  
**BPX**

SIZE 8 FRONT RELEASE, FRONT REMOVABLE  
PC POST PIN COAX CONTACTS

Issue:  
Dec. 16, 2008

Page  
**1/2**

**RECOMMENDED  
PC DRILL PATTERN**



**MATERIAL:**

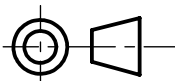
- OUTER CONTACT : BRASS PER ASTM B 16 OR ASTM B 453 OR EN 12164
- CENTER CONTACT : BERYLLIUM COPPER PEZR ASTM B 196
- DIELECTRIC : PTFE PER ASTM D 1710 OR EQUIVALENT

**FINISH:**

- ALL METAL PARTS : PLATING .00005 INCH OF GOLD PER SAE 2422 OVER NICKEL PER SAE AMS QQ N 290
- PWD SOLDER CONTACT AREA WHICH IS : - TIN LEADED PER QQ S 571
- ROHS TINNED

**EXTRACTION TOOL:** RADIALL P/N 282 549 009

**DIMENSIONS : mm (inch are given for information only)**



This information is given as an indication. In the continual goal to improve our products, we reserve the right to make any modifications judged necessary.

4112\_9311

<b>CREATION</b>				
<b>PEN:</b>				
<b>NOM:</b> MACARI JP.				
<b>DATE:</b> Dec. 06, 2007				
<b>APPR.:</b> LEGENDRE T.	Dec. 16, 08	Added ROHS finned contacts	Legendre	Brochet
	Issue	Revisions	Name	Approved

4112\_9311 This information is given as an indication. In the continual goal to improve our products, we reserve the right to make any modifications judged necessary.

	CTS P/N	CONTACT TERMINATION	ØA		B		C		
			BEFORE TINNING	AFTER TINNING	BEFORE TINNING	AFTER TINNING	BEFORE TINNING	AFTER TINNING	
NOT TINNED	619 140 009	YA	Ø0,84 (.033) Ø0,78 (.031)	NA	0,78 (.031) 0,74 (.029)	NA	0,56 (.022) 0,42 (.016)	NA	
TIN LEADED	619 140 014	ZA		0,95 MAX (.037)		0,85 MAX (.033)		0,65 MAX (.026)	
<b>ROHS TINNED</b>	<b>619 140 509</b>	<b>RA</b>		NA		NA		NA	
NOT TINNED	619 140 010	Y		0,95 MAX (.037)		0,85 MAX (.033)		0,65 MAX (.026)	
TIN LEADED	619 140 013	Z		NA		NA		NA	
<b>ROHS TINNED</b>	<b>619 140 510</b>	<b>R</b>		0,95 MAX (.037)		0,85 MAX (.033)		0,65 MAX (.026)	
NOT TINNED	619 140 007	YB		NA		NA		NA	
TIN LEADED	619 140 008	ZB		0,95 MAX (.037)		0,85 MAX (.033)		0,65 MAX (.026)	
<b>ROHS TINNED</b>	<b>619 140 507</b>	<b>RB</b>		NA		NA		NA	
NOT TINNED	619 140 011	YC		0,95 MAX (.037)		0,85 MAX (.033)		0,65 MAX (.026)	
TIN LEADED	619 140 012	ZC							
<b>ROHS TINNED</b>	<b>619 140 511</b>	<b>RC</b>							

	CTS P/N	CONTACT TERMINATION	D		E EXTENSION / INSERT REAR FACE		F EXTENSION / FRONT FLANGE OF SHELL		ØX
			BEFORE TINNING	AFTER TINNING	BEFORE TINNING	AFTER TINNING	BEFORE TINNING	AFTER TINNING	
NOT TINNED	619 140 009	YA	12,35 (.487)	NA	12,40 (.488)	NA	4,60 (.181)	NA	Ø1,12 MIN (.044)
TIN LEADED	619 140 014	ZA	12,25 (.482)	12,85 MAX (.506)	12,20 (.480)	12,90 MAX (.508)	3,80 (.150)	5,10 MAX (.201)	Ø1,22 MIN (.048)
<b>ROHS TINNED</b>	<b>619 140 509</b>	<b>RA</b>							
NOT TINNED	619 140 010	Y	15,00 (.591)	NA	15,05 (.592)	NA	7,20 (.283)	NA	Ø1,12 MIN (.044)
TIN LEADED	619 140 013	Z	14,90 (.586)	15,50 MAX (.611)	14,85 (.584)	15,55 MAX (.612)	6,40 (.252)	7,70 MAX (.303)	Ø1,22 MIN (.048)
<b>ROHS TINNED</b>	<b>619 140 510</b>	<b>R</b>							
NOT TINNED	619 140 007	YB	18,10 (.713)	NA	18,15 (.715)	NA	10,30 (.406)	NA	Ø1,12 MIN (.044)
TIN LEADED	619 140 008	ZB	18,00 (.709)	18,60 MAX (.733)	17,95 (.706)	18,65 MAX (.735)	9,50 (.374)	10,80 MAX (.426)	Ø1,22 MIN (.048)
<b>ROHS TINNED</b>	<b>619 140 507</b>	<b>RB</b>							
NOT TINNED	619 140 011	YC	21,40 (.843)	NA	21,45 (.844)	NA	13,60 (.535)	NA	Ø1,12 MIN (.044)
TIN LEADED	619 140 012	ZC	21,30 (.838)	21,90 MAX (.863)	21,25 (.836)	21,95 MAX (.864)	12,80 (.504)	14,10 MAX (.555)	Ø1,22 MIN (.048)
<b>ROHS TINNED</b>	<b>619 140 511</b>	<b>RC</b>							