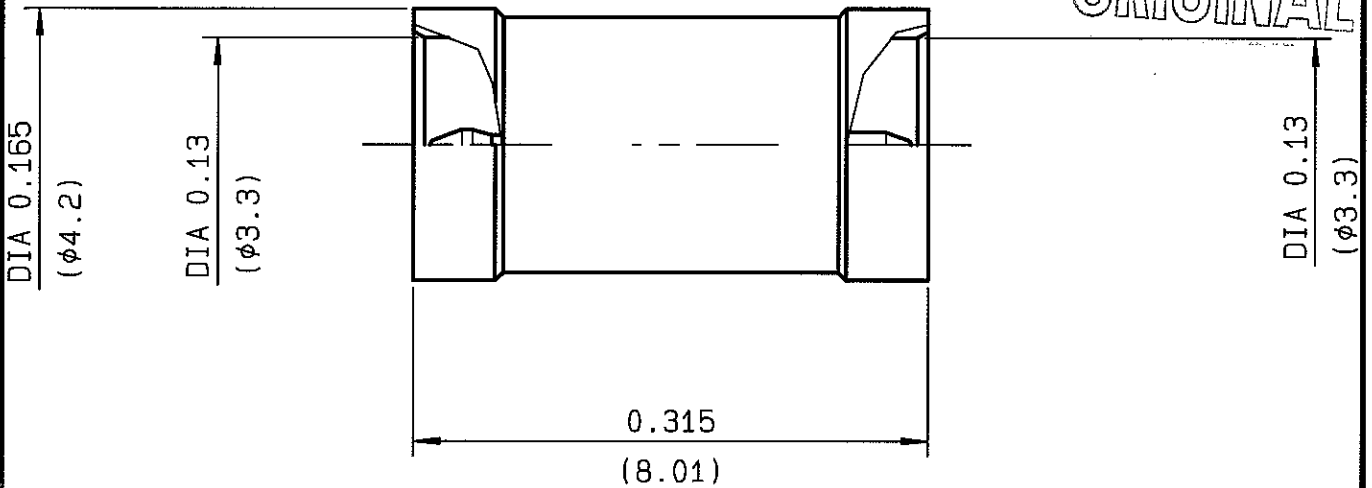


**MALE-MALE ADAPTOR GAP BETWEEN PCB CARDS**  
**9.55MM. PACK. 100**

**R209.703.070**  
**SERIES MMS**

**ORIGINAL**



|                                 |                                  |
|---------------------------------|----------------------------------|
| NOMINAL IMPEDANCE               | <b>50</b> Ω                      |
| FREQUENCY RANGE                 | <b>0-2</b> GHz                   |
| TEMPERATURE RATING              | <b>-40/+90</b> °C                |
| V.S.W.R                         | <b>1.2 +</b> x F(GHz)Maxi        |
| RF INSERTION LOSS               | <b>0.07</b> √F(GHz) dB Maxi      |
| VOLTAGE RATING                  | <b>50</b> Veff Maxi              |
| DIELECTRIC WITHSTANDING VOLTAGE | <b>250</b> Veff Mini             |
| INSULATION RESISTANCE           | <b>500</b> MΩMini                |
| HERMETIC SEAL                   | <b>NA</b> Atm.cm <sup>3</sup> /s |
| LEAKAGE (pressurized only)      | <b>NA</b>                        |
| MECHANICAL DURABILITY           | <b>50</b> Cycles                 |
| WEIGHT                          | gr                               |
| SPECIFICATION                   |                                  |

CABLES :

OTHERS CHARACTERISTICS

|                            |                     |
|----------------------------|---------------------|
| CABLE RETENTION            | <b>NA</b> N Mini    |
| CENTER CONTACT RETENTION   |                     |
| Axial force - mating end   | <b>10</b> N Mini    |
| Axial force - opposite end | <b>10</b> N Mini    |
| Torque                     | <b>NA</b> cm.N Mini |
| RECOMMENDED TORQUES        |                     |
| Mating                     | <b>NA</b> cm.N      |
| Panel nut                  | <b>NA</b> cm.N      |
| Clamp nut                  | <b>NA</b> cm.N      |

| CONNECTOR PARTS | MATERIALS | FINISH   | (all values are given in micrometers) |
|-----------------|-----------|----------|---------------------------------------|
| BODY            | BRASS     | NICKEL 2 |                                       |
| OUTER CONTACT   |           |          |                                       |
| CENTER CONTACT  | BRASS     | NICKEL 2 |                                       |
| INSULATOR       | PTFE      | -        |                                       |
| GASKET          |           | -        |                                       |
| OTHERS PIECES   |           |          |                                       |

|                |                   |                    |
|----------------|-------------------|--------------------|
| ISSUE          | CREATION DATE     | FILE PART-NUMBER   |
| <b>0002A00</b> | <b>16/09/1999</b> | <b>99-0400-215</b> |



**RADIALL®**

The information given here is subject to change without notice.  
 Design changes may be in order to improve the product.

*Connect to the future*

MASTHERND