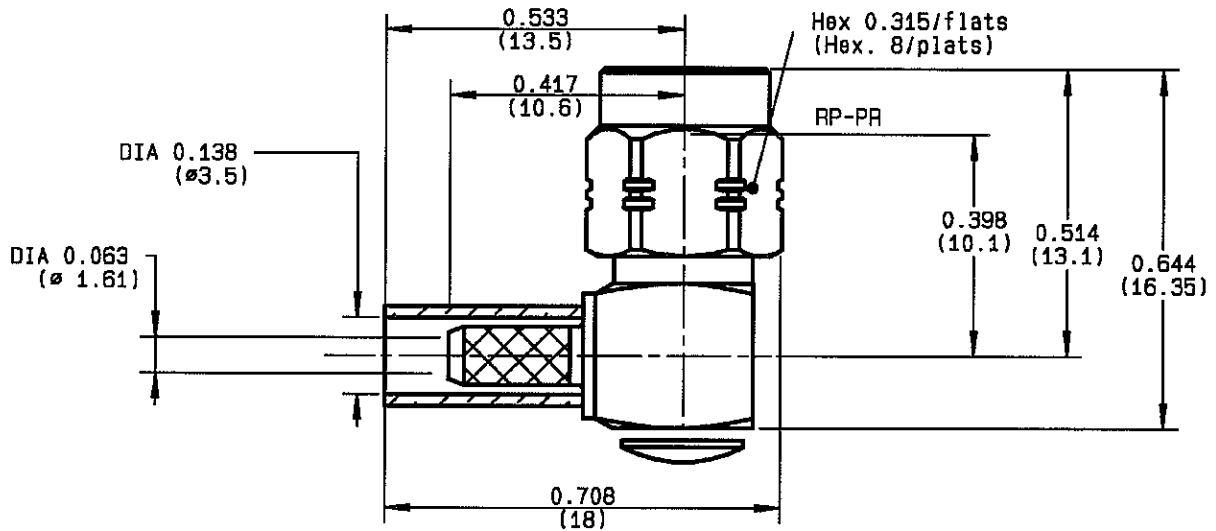


RIGHT ANGLE PLUG CRIMP TYPE CABLE 2.6/50 D	R124.174.123 SERIES SMA-COM
---	--



<table border="0"> <tr><td>NOMINAL IMPEDANCE</td><td style="text-align: center;">50 Ω</td></tr> <tr><td>FREQUENCY RANGE</td><td style="text-align: center;">0-12.4 GHz</td></tr> <tr><td>TEMPERATURE RATING</td><td style="text-align: center;">-65/+165 °C</td></tr> <tr><td>V.S.W.R</td><td style="text-align: center;">1.15 + .03 x F(GHz)Maxi</td></tr> <tr><td>RF INSERTION LOSS</td><td style="text-align: center;">0.05 √F(GHz) dB Maxi</td></tr> <tr><td>VOLTAGE RATING</td><td style="text-align: center;">250 Veff Maxi</td></tr> <tr><td>DIELECTRIC WITHSTANDING VOLTAGE</td><td style="text-align: center;">750 Veff Mini</td></tr> <tr><td>INSULATION RESISTANCE</td><td style="text-align: center;">5000 MΩMini</td></tr> <tr><td>HERMETIC SEAL</td><td style="text-align: center;">NA Atm.cm³/s</td></tr> <tr><td>LEAKAGE (pressurized only)</td><td style="text-align: center;">NA</td></tr> <tr><td>MECHANICAL DURABILITY</td><td style="text-align: center;">100 Cycles</td></tr> <tr><td>WEIGHT</td><td style="text-align: center;">4.8 gr</td></tr> <tr><td>SPECIFICATION</td><td></td></tr> </table>	NOMINAL IMPEDANCE	50 Ω	FREQUENCY RANGE	0-12.4 GHz	TEMPERATURE RATING	-65/+165 °C	V.S.W.R	1.15 + .03 x F(GHz)Maxi	RF INSERTION LOSS	0.05 √F(GHz) dB Maxi	VOLTAGE RATING	250 Veff Maxi	DIELECTRIC WITHSTANDING VOLTAGE	750 Veff Mini	INSULATION RESISTANCE	5000 MΩMini	HERMETIC SEAL	NA Atm.cm ³ /s	LEAKAGE (pressurized only)	NA	MECHANICAL DURABILITY	100 Cycles	WEIGHT	4.8 gr	SPECIFICATION		<table border="0"> <tr><td>CABLES : K02252D RD 316</td></tr> <tr><td>OTHERS CHARACTERISTICS</td></tr> <tr><td>CABLE RETENTION</td><td style="text-align: right;">110 N Mini</td></tr> <tr><td>CENTER CONTACT RETENTION</td></tr> <tr><td> Axial force - mating end</td><td style="text-align: right;">27 N Mini</td></tr> <tr><td> Axial force - opposite end</td><td style="text-align: right;">27 N Mini</td></tr> <tr><td> Torque</td><td style="text-align: right;">NA cm.N Mini</td></tr> <tr><td>RECOMMENDED TORQUES</td></tr> <tr><td> Mating</td><td style="text-align: right;">60 cm.N</td></tr> <tr><td> Panel nut</td><td style="text-align: right;">NA cm.N</td></tr> <tr><td> Clamp nut</td><td style="text-align: right;">NA cm.N</td></tr> </table>	CABLES : K02252D RD 316	OTHERS CHARACTERISTICS	CABLE RETENTION	110 N Mini	CENTER CONTACT RETENTION	Axial force - mating end	27 N Mini	Axial force - opposite end	27 N Mini	Torque	NA cm.N Mini	RECOMMENDED TORQUES	Mating	60 cm.N	Panel nut	NA cm.N	Clamp nut	NA cm.N
NOMINAL IMPEDANCE	50 Ω																																												
FREQUENCY RANGE	0-12.4 GHz																																												
TEMPERATURE RATING	-65/+165 °C																																												
V.S.W.R	1.15 + .03 x F(GHz)Maxi																																												
RF INSERTION LOSS	0.05 √F(GHz) dB Maxi																																												
VOLTAGE RATING	250 Veff Maxi																																												
DIELECTRIC WITHSTANDING VOLTAGE	750 Veff Mini																																												
INSULATION RESISTANCE	5000 MΩMini																																												
HERMETIC SEAL	NA Atm.cm ³ /s																																												
LEAKAGE (pressurized only)	NA																																												
MECHANICAL DURABILITY	100 Cycles																																												
WEIGHT	4.8 gr																																												
SPECIFICATION																																													
CABLES : K02252D RD 316																																													
OTHERS CHARACTERISTICS																																													
CABLE RETENTION	110 N Mini																																												
CENTER CONTACT RETENTION																																													
Axial force - mating end	27 N Mini																																												
Axial force - opposite end	27 N Mini																																												
Torque	NA cm.N Mini																																												
RECOMMENDED TORQUES																																													
Mating	60 cm.N																																												
Panel nut	NA cm.N																																												
Clamp nut	NA cm.N																																												

CONNECTOR PARTS	MATERIALS	FINISH <small>(all values are given in micrometers)</small>
BODY	BRASS	GOLD 0.2 OVER NICKEL 2
OUTER CONTACT		
CENTER CONTACT	BRASS	GOLD 1.3 OVER COPPER 2.5
INSULATOR	PTFE	-
GASKET		-
OTHERS PIECES	BRASS	GOLD 0.2 OVER NICKEL 2

TRIQUES

ISSUE 0708E	CREATION DATE 30/09/1993	FILE PART-NUMBER EPC 97-03
-----------------------	------------------------------------	--------------------------------------



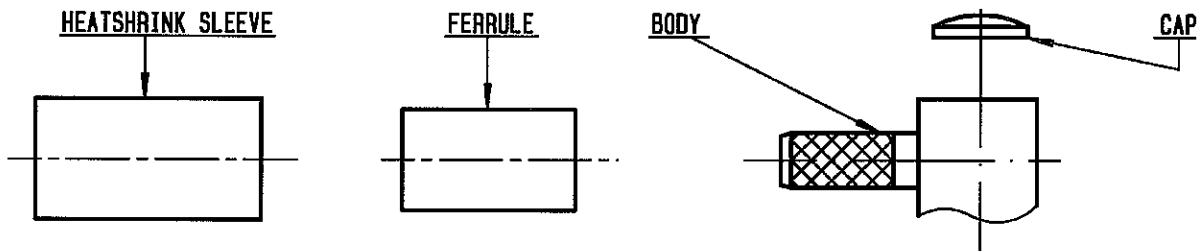
The information given here is subject to change without notice.
Design changes may be in order to improve the product .

Connect to the future



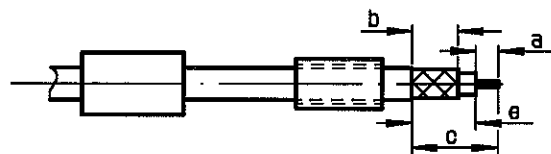
R124.174.123

ISSUE **0708E** SERIES **SMA-COM**



①

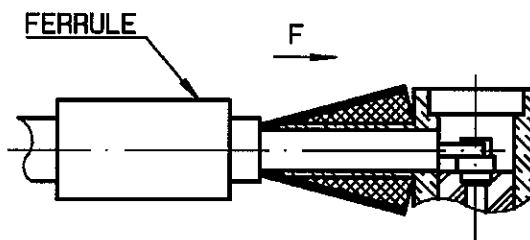
Slide heatshrink sleeve (R280.637.020 - Option) and the ferrule onto cable .
Strip the cable .



Stripping	a	b	c	d	e
inch	0.079	0.256	0.472	0	0.394
mm	2	6.5	12		10

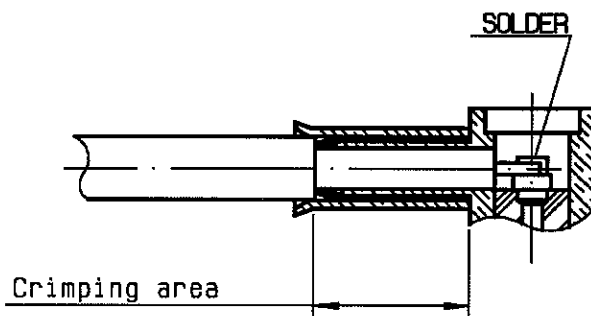
②

Fan the braid .
Push connector body under the braid .
Slide ferrule over braid
(in direction F)



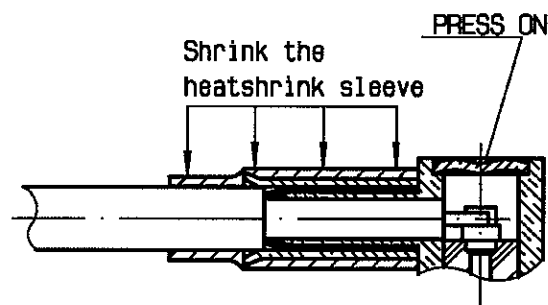
③

Crimp the ferrule with crimping tool R282 271 000 (Hex. : 0.151) or crimping tool R 282 293 000 (M22520/5-01) + dies R 282 235 037 (M22520/5-37)
Solder inner conductor .



④

Place the cap into body.
Press cap flush or slightly below surface of body assembly .
Slide sleeve over ferrule and heatshrink in place (Option) .



TRIQUES